



**GRASSEY COTTAGE**  
21 Green End, Fen Ditton

Carter Jonas



---

## GRASSEY COTTAGE, 21 GREEN END, FEN DITTON, CAMBRIDGE, CB5 8SX

– Cambridge City Centre - approx. 4 miles

2 Double bedrooms • Sitting room & separate snug  
• Dining room • Kitchen breakfast room • Utility •  
Stunning gardens overlooking the Cam • Double  
garage • Driveway parking

### DESCRIPTION

This delightful period cottage sits in a quiet spot within the sought after village of Fen Ditton. The property occupies a generous and mature plot with a sunny westerly aspect, overlooking the river Cam. Inside, the accommodation is well-proportioned and large windows provide a good supply of natural light. The sitting room and a separate dining room, sit either side of an impressive brick-built inglenook fireplace, creating a versatile and practical entertaining space. At the rear, overlooking the garden, there is a small snug/study, a kitchen breakfast room, and a useful utility with W.C. beyond.

Upstairs a bright and airy landing provides access to two double bedrooms and the family bathroom. The larger of the two bedrooms is a particularly generous double with a dual aspect providing an abundance of natural light. Built into the landing / hallway between the two bedrooms is a full wall of wardrobe storage.

### OUTSIDE

The driveway is suitable for parking two vehicles and provides access to a detached double garage. The rear garden has been beautifully stocked, with landscaping as you would expect to find in a country, cottage garden. Immediately adjacent to the kitchen is a large, paved terrace. The terrace sits above the garden and provides a pleasant outlook toward the river and over the garden and meadow beyond.

**CHARMING GRADE II LISTED DETACHED COTTAGE, SITUATED IN THE  
HIGHLY DESIRABLE VILLAGE OF FEN DITTON.**





## LOCATION

Location Fen Ditton lies on the east bank of the River Cam, on the road from Cambridge to Clayhithe, close to junction 34 of the A14 (access to and from the west only), about 4 miles from the city centre. The village has a thriving local community with a primary school, three public houses and a cricket club. It is often associated with 'The Bumps', the annual rowing races held on the river.

## ADDITIONAL INFORMATION

**Tenure:** Freehold

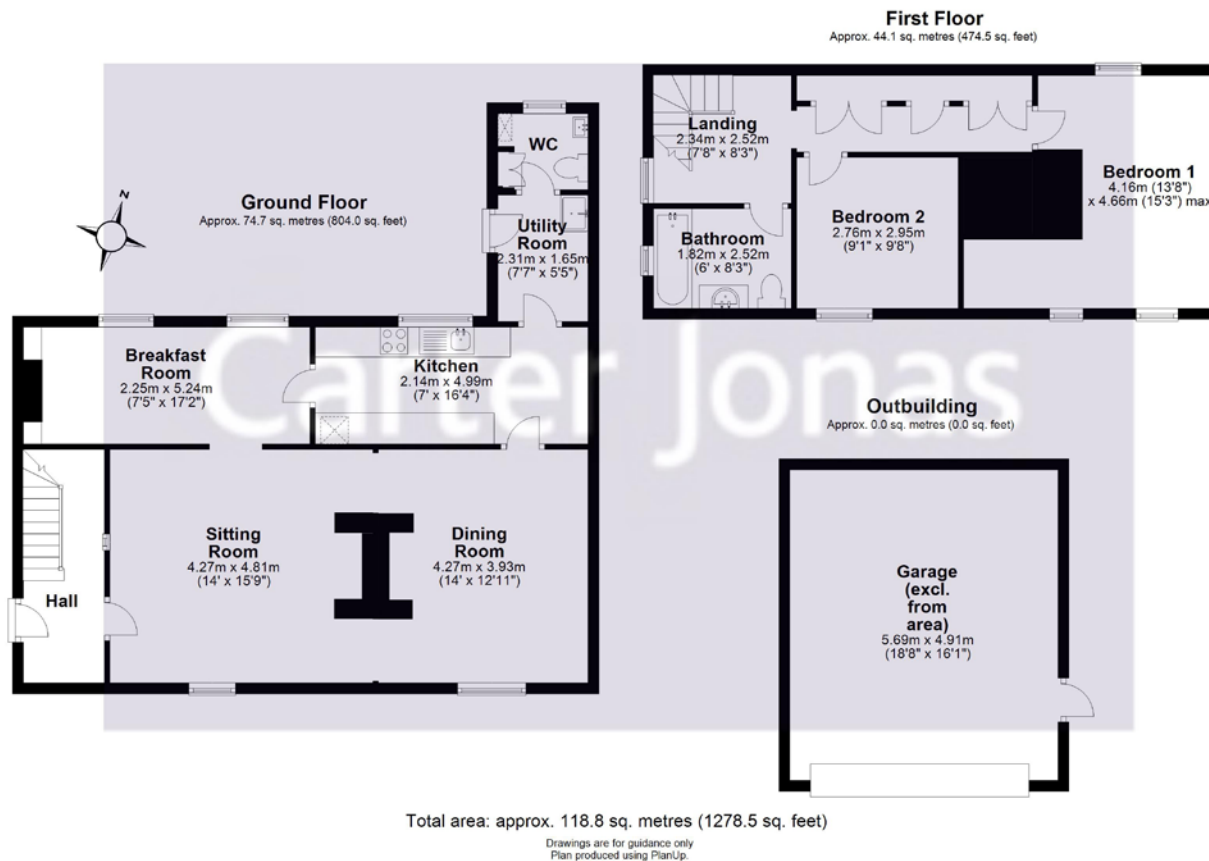
**Services:** All mains services are connected

**Local Authority:** South Cambridgeshire District Council

**Directions:** Strictly by appointment with the Selling Agent







## Cambridge South

cambridgesales@carterjonas.co.uk  
The Marque, 141 Hills Road, Cambridge, CB2 8RJ

## carterjonas.co.uk

Offices throughout the UK

*Exclusive UK affiliate of*

**CHRISTIE'S**  
INTERNATIONAL REAL ESTATE

## IMPORTANT INFORMATION

These particulars are for general information purposes only and do not represent an offer of contract or part of one. Carter Jonas has made every attempt to ensure that the particulars and other information provided are as accurate as possible and are not intended to amount to advice on which you should rely as being factually accurate. You should not assume that the property has all necessary planning, building regulations or other consents and Carter Jonas have not tested any services, facilities or equipment. Any measurements and distances given are approximate only. Purchasers must satisfy themselves of all of the aforementioned by independent inspection or otherwise. Although we make reasonable efforts to update our information, neither Carter Jonas LLP nor anyone in its employment or acting on its behalf makes any representations warranties or guarantees, whether express or implied, in relation to the property, or that the content in these particulars is accurate, complete or up to date. Our images only represent part of the property as it appeared at the time they were taken. If you require further information please contact us.