



CURZON SQUARE, MAYFAIR, W1J
£1,895 per week*

Carter Jonas

CURZON SQUARE, MAYFAIR, LONDON, W1J

A two-bedroom apartment of approximately 905 square feet

- Long let, minimum term 12 months
- Furnished
- 2 Bedrooms
- 1 Reception room
- 1 Kitchen
- 1 En suite shower room
- 1 Bathroom
- 1 Underground parking space

THE PROPERTY

Situated on the third floor of this attractive period building with lift and porter located on Curzon square minutes from Hyde Park and within walking distance of transport links. The apartment is presented to a high standard throughout.

LOCATION

Mayfair is London's most fashionable destination. With London's finest buildings, largest concentration of luxury hotels, best restaurants, bars, shopping, open spaces and hidden treasures all nestled together in a beautiful village setting.

Nearest Tube: Hyde Park Corner / Marble Arch

AST

The deposit will be £11,370 at a rental value of £1,895 per week (asking price)

Rent cannot be paid weekly

Holding deposit = 1 weeks rent of £1,895 per week

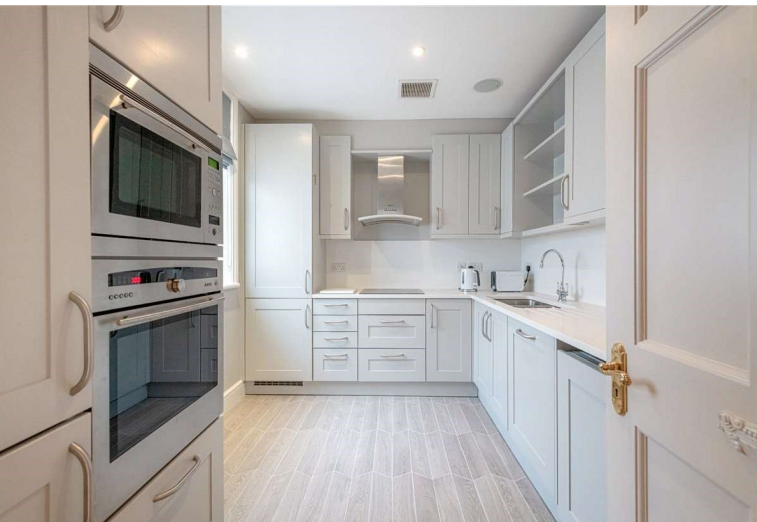
Deposit is 6 weeks rent (£1,895 per week = £11,370 deposit)



ADDITIONAL INFORMATION

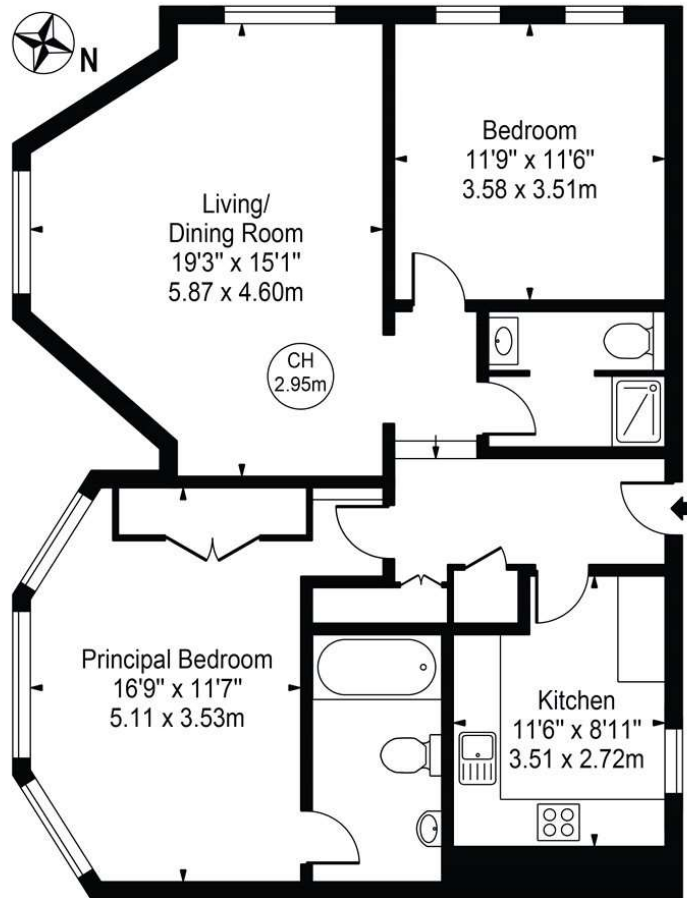
Offers	Available for a minimum term of 12 months longer terms will be considered
Viewing	Strictly by appointment
Local Authority	Westminster County Council - Council Tax Band G

EPC TBC



Curzon Square

Approx. Gross Internal Area 905 Sq Ft - 84.08 Sq M



Third Floor
For Illustration Purposes Only - Not To Scale

This floor plan should be used as a general outline for guidance only and does not constitute in whole or in part an offer or contract. Any intending purchaser or lessee should satisfy themselves by inspection, searches, enquiries and full survey as to the correctness of each statement. Any areas, measurements or distances quoted are approximate and should not be used to value a property or be the basis of any sale or let. Copyright Morriarti Photography & Design LTD



T: 020 7493 0676

18 Davies Street, Mayfair, London, W1K 3DS

E: mayfair@carterjonas.co.uk



Exclusive UK affiliate of

CHRISTIE'S
INTERNATIONAL REAL ESTATE

Classification L2 - Business Data

IMPORTANT INFORMATION

Our property particulars do not represent an offer or contract, or part of one. The information given is without responsibility on the part of the agents, seller(s) or lessor(s) and you should not rely on the information as being factually accurate about the property, its condition or its value. Neither Carter Jonas LLP nor anyone in its employment or acting on its behalf has authority to make any representation or warranty in relation to this property. We have not carried out a detailed survey, nor tested the services, appliances or fittings at the property. The images shown may only represent part of the property and are as they appeared at the time of being photographed. The areas, measurements and distances are approximate only. Where Carter Jonas have been provided with a floorplan by a third party, we can not guarantee that the floorplan has been measured in accordance with IPMS. Any reference to alterations or use does not mean that any necessary planning permission, building regulation or other consent has been obtained. The VAT position relating to the property may change without notice. Administration fees may apply depending on tenancy type. Please contact your local branch for this information.