



**MALTINGS PLACE, SW6**  
£2,250 per calendar month

**Carter Jonas**



---

# MALTINGS PLACE, SW6 2BX

This lovely two double bedroom property, in the popular Maltings Place development is located within a short walk of Fulham Broadway and Parsons Green.

## LOCATION

Maltings Place is a gated development on Fulmead Street, approximately 0.6 miles from both Fulham Broadway underground station and Parsons Green underground station (District line). Imperial Wharf overground station is also approximately 0.3 miles away.

## THE PROPERTY

This bright and spacious two double bedroom property, in the popular Maltings Place development, is located a short walk away from Fulham Broadway.

The property comprises an open plan reception/kitchen, two double bedrooms, both with fitted wardrobes and a bathroom with power shower. The reception room benefits from direct access out to the communal gardens.

The property is situated on the ground floor of this gated development. This apartment comes with one off street parking space.

The property comes either furnished or part furnished.

**Holding deposit: 1 week's rent**

**Security deposit: 5 week's rent**

**Council tax band: E**

## OUTSIDE

Communal Garden.





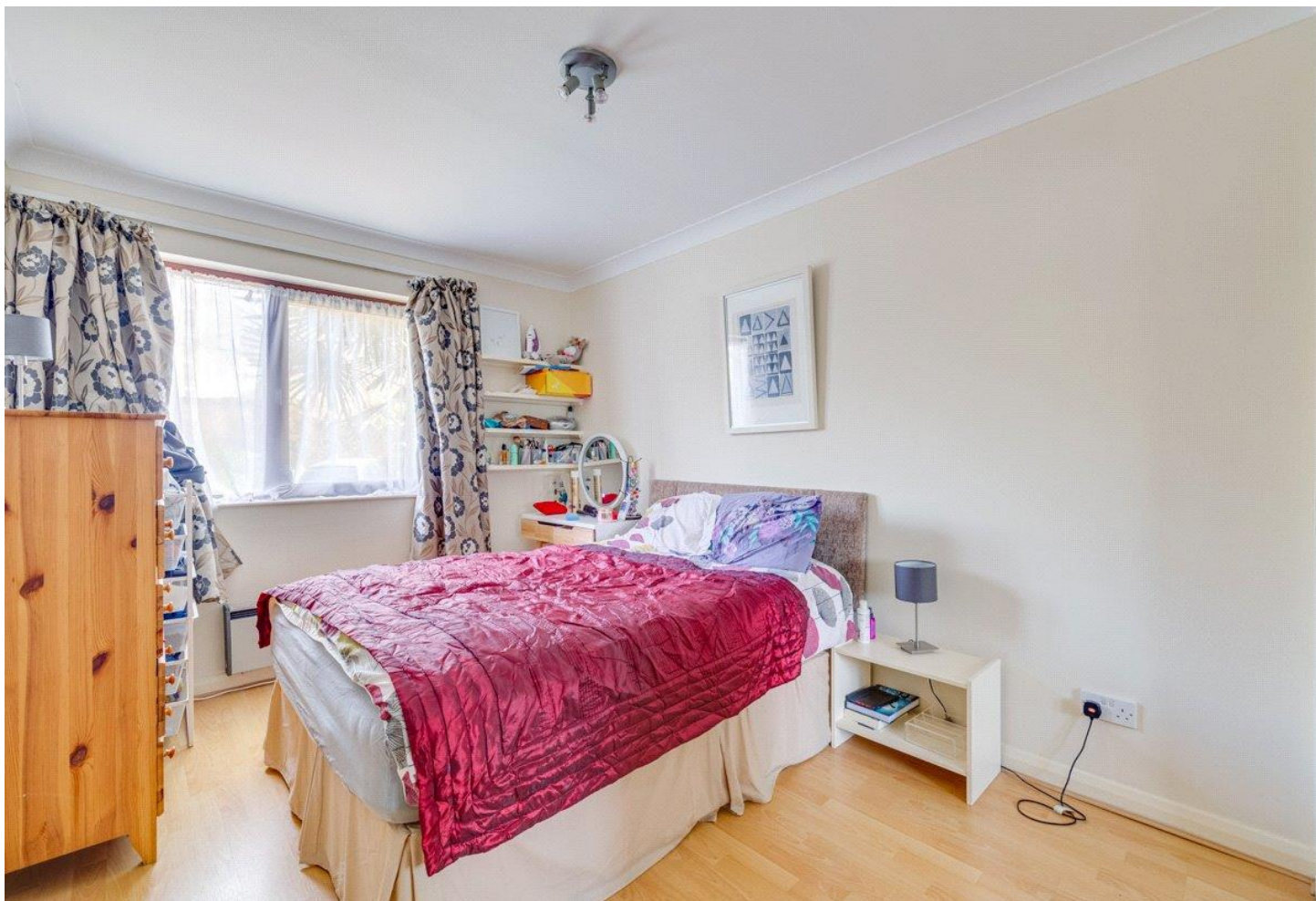
- Two double bedrooms
- Direct access to communal gardens
- Off street parking
- Private gated development
- Ground floor apartment

## ADDITIONAL INFORMATION

Offers Available for a minimum term of 12 months longer terms will be considered

Viewing Strictly by appointment

Local Authority Hammersmith and Fulham - Council Tax Band E

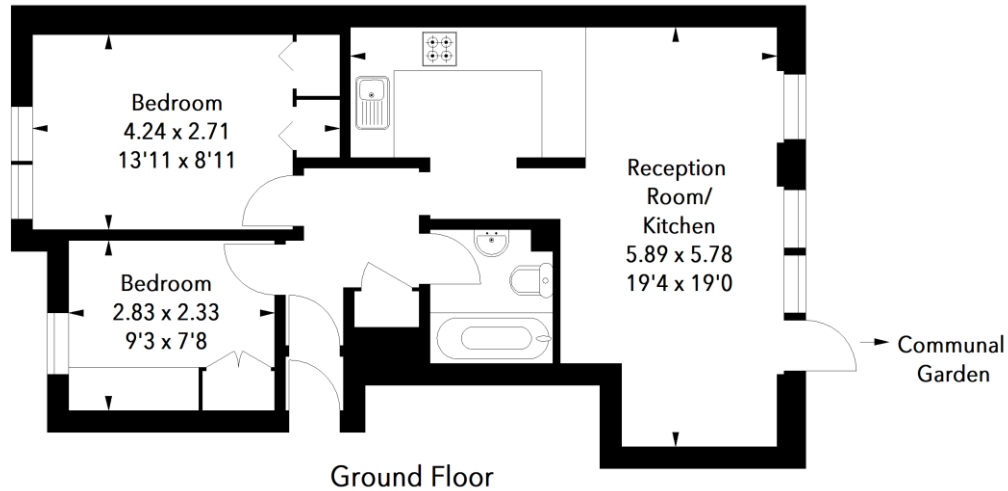




## Maltings Place, SW6

Approximate Area = 51.19 sq m / 551 sq ft

Key :  
CH - Ceiling Height



The floor plan is not to scale and measurements and areas shown are approximate and therefore should be used for illustrative purposes only. The plan has been prepared in accordance with the RICS code of Measuring Practice and whilst we have confidence in the information produced, it must not be relied on. If there is any aspect of particular importance, you should carry out or commission your own inspection of the property.

Energy Efficiency Rating		
	Current	Potential
Very energy efficient - lower running costs		
(92+) <b>A</b>		
(81-91) <b>B</b>		
(69-80) <b>C</b>		
(55-68) <b>D</b>		
(39-54) <b>E</b>		
(21-38) <b>F</b>		
(1-20) <b>G</b>		
Not energy efficient - higher running costs		
England, Scotland & Wales	EU Directive 2002/91/EC	



T: 020 7751 8898

361 Fulham Palace Road, London, SW6 6TA

E: [parsonsgreen.residential.lettings@carterjonas.co.uk](mailto:parsonsgreen.residential.lettings@carterjonas.co.uk)

A member of



Exclusive UK affiliate of

**CHRISTIE'S**  
INTERNATIONAL REAL ESTATE

### IMPORTANT INFORMATION

These particulars are for general information purposes only and do not represent an offer of contract or part of one. Carter Jonas has made every attempt to ensure that the particulars and other information provided are as accurate as possible and are not intended to amount to advice on which you should rely as being factually accurate. You should not assume that the property has all necessary planning, building regulations or other consents and Carter Jonas have not tested any services, facilities or equipment. Any measurements and distances given are approximate only. Where Carter Jonas have been provided with a floorplan by a third party, we can not guarantee that the floorplan has been measured in accordance with IPMS. Purchasers or prospective tenants must satisfy themselves of all of the aforementioned by independent inspection or otherwise. Although we make reasonable efforts to update our information, neither Carter Jonas nor anyone in its employment or acting on its behalf makes any representations warranties or guarantees, whether express or implied, in relation to the property, or that the content in these particulars is accurate, complete or up to date. Our images only represent part of the property as it appeared at the time they were taken and do not represent the furnishings included, these are confirmed in a separate inventory. If you require further information please contact us.

\*Administration fees may apply depending on tenancy type. Please contact your local branch for this information.