



BURNTWOOD GRANGE ROAD, LONDON, SW18

Carter Jonas

BURNTWOOD GRANGE ROAD, LONDON, SW18

Great location, moments from Wandsworth Common. This fantastic four bedroom townhouse, with private garden and off-street parking, offers flexible living and entertaining space.

The c. 1,394 square foot property is arranged over three floors. On the ground floor, a welcoming hallway with guest cloakroom and storage, opens on to the spacious living/dining room which flows through to the bright kitchen/diner which overlooks the private garden to the rear. There is also a useful storage space, ideal for washing machine/tumble dryer, under the stairs.

On the first floor, a large reception room, has magnificent views over the treeline towards Wimbledon Common. Also on this floor, a double bedroom overlooks the garden, with a stylish shower room adjacent.

On the second floor, one of the double bedrooms has wonderful views to Wimbledon Village, the second double bedroom overlooks the garden, with Wandsworth Common beyond. A single study/bedroom can also be found on this floor, along with a family bathroom. There is ample storage and a large loft provides further space.

Burntwood Grange Road is a no-through road that leads via a short pedestrian footpath directly onto the green open spaces of Wandsworth Common. Bellevue Road, with its excellent shops, bars and restaurants, is a short walk away, as is Wandsworth Common station (0.6m), providing direct access to Victoria via Clapham Junction. The house sits within the existing first catchment of Beatrix Potter Primary School and within close distance of a number of excellent independent schools including Finton House and Broomwood Hall.

AMENITIES

- Four bedrooms
- Kitchen/diner
- Two reception rooms
- Private garden
- Off street parking
- Close to Wandsworth Common
- Transport links nearby
- Beatrix Potter Primary School

TENURE Freehold

LOCAL AUTHORITY London Borough of Wandsworth

EPC BAND C





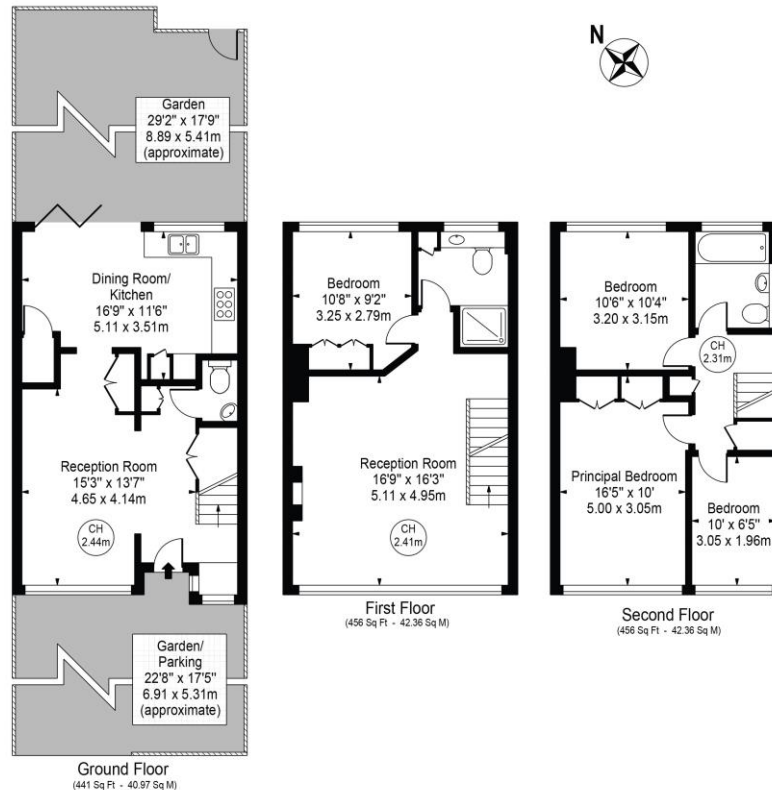
Classification L2 - Business Data



Classification L2 - Business Data

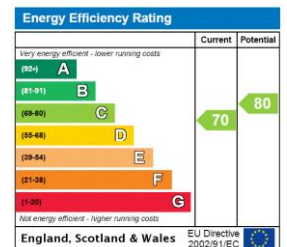
Burntwood Grange Road

Approx. Gross Internal Area 1353 Sq Ft - 125.70 Sq M



For Illustration Purposes Only - Not To Scale

This floor plan should be used as a general outline for guidance only and does not constitute in whole or in part an offer or contract. Any intending purchaser or lessee should satisfy themselves by inspection, searches, enquiries and full survey as to the correctness of each statement. Any areas, measurements or distances quoted are approximate and should not be used to value a property or be the basis of any sale or let. Copyright Morriarti Photography & Design LTD



Wandsworth Sales 020 8767 7711

wandsworth@carterjonas.co.uk
19 Bellevue Road, London, SW17 7EG

carterjonas.co.uk
Offices throughout the UK

Exclusive UK affiliate of

CHRISTIE'S
INTERNATIONAL REAL ESTATE

Classification L2 - Business Data

IMPORTANT INFORMATION

These particulars are for general information purposes only and do not represent an offer of contract or part of one. Carter Jonas has made every attempt to ensure that the particulars and other information provided are as accurate as possible and are not intended to amount to advice on which you should rely as being factually accurate. You should not assume that the property has all necessary planning, building regulations or other consents and Carter Jonas have not tested any services, facilities or equipment. Any measurements and distances given are approximate only. Purchasers must satisfy themselves of all of the aforementioned by independent inspection or otherwise. Although we make reasonable efforts to update our information, neither Carter Jonas LLP nor anyone in its employment or acting on its behalf makes any representations warranties or guarantees, whether express or implied, in relation to the property, or that the content in these particulars is accurate, complete or up to date. Our images only represent part of the property as it appeared at the time they were taken. If you require further information please contact us.