



611 WESTGATE APARTMENTS, LEEMAN ROAD, YORK
Offers Over £795,000

Carter Jonas

611 WESTGATE APARTMENTS, YORK, YO26 4ZP

Westgate Apartments has long been one of York's most admired residential buildings designed to emulate the four gates of the city.

Constructed to an individual design this striking building has become a much-loved landmark and a true destination address.

With floor to ceiling glass windows offering stunning views of the river Ouse this is arguably one of the very best penthouses available in this building. The well-proportioned accommodation is arranged over two floors with a superb free flowing top floor living area giving access to a generous and well-appointed kitchen with granite worktops and central island, and dining area.

A superb roof terrace (approx 300sqft) surrounds the space and offers exceptional views across the city skyline encompassing the river and city walls. Ideal for al fresco entertaining, the terrace makes the most of the outside inside space and enjoys a good degree of privacy.

There are two large bedrooms both with fitted wardrobes and the master featuring a very stylish ensuite bathroom with walk in shower. The house bathroom features a luxury bath, shower, and high-quality fittings. A study room has been created for those who work from home, this also houses a single bed and fitted wardrobes.

There is an impressive ground floor entrance hall with contemporary Amtico flooring. The ground floor features glass fronted individually programmable convection heaters. The upper living accommodation benefits from programmable convection heating and electric flame effect fire.

In addition to the unrivalled views and interior space, there is a professional concierge service, secure undercroft parking, video entry system, CCTV cameras and underground storage for bicycles all providing functional luxury apartment living in this prestigious development.

York city centre offers a wide range of amenities including shopping, restaurants, well renowned schools, York racecourse and two theatres.

York railway station is a short walk away from the apartment and has regular services to major cities including Manchester, Edinburgh and London with some journeys taking less than 2 hours to King's Cross.

Lease length 999 years from 2002
Service charge: £4049 pa for 2022
Ground rent: £150 pa
Council Tax: Band E
EPC: D

A STUNNING SIXTH FLOOR TWO-BEDROOM DUPLEX APARTMENT WITH STUNNING VIEWS ACROSS YORK AND THE RIVER OUSE.





Classification L2 - Business Data



Classification L2 - Business Data

611 Westgate Apartment

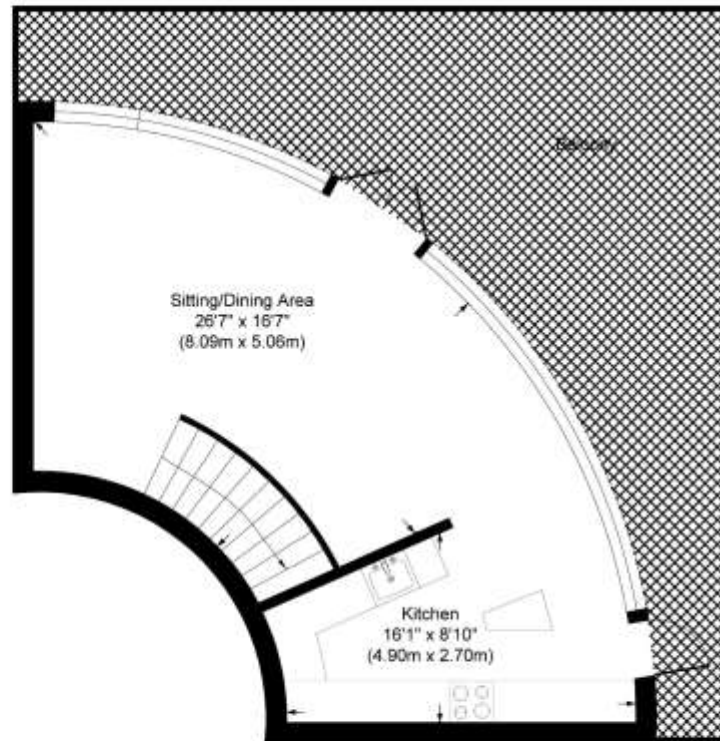
Approximate Gross Internal Floor Area = 122.4 sq m / 1318 sq ft

Sixth Floor Area = 73.1 sq m / 788 sq ft

Seventh Floor Area = 49.3 sq m / 531 sq ft

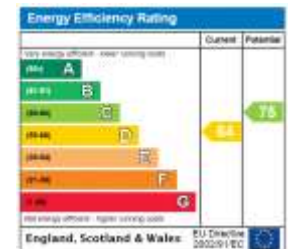


Sixth Floor



Seventh Floor

Illustration for identification purposes only, measurements are approximate, not to scale.



York 01904 558200

york@carterjonas.co.uk
82 Micklegate, York, YO1 6LF

carterjonas.co.uk
Offices throughout the UK

Exclusive UK affiliate of
CHRISTIE'S
INTERNATIONAL REAL ESTATE

IMPORTANT INFORMATION

These particulars are for general information purposes only and do not represent an offer of contract or part of one. Carter Jonas has made every attempt to ensure that the particulars and other information provided are as accurate as possible and are not intended to amount to advice on which you should rely as being factually accurate. You should not assume that the property has all necessary planning, building regulations or other consents and Carter Jonas have not tested any services, facilities or equipment. Any measurements and distances given are approximate only. Purchasers must satisfy themselves of all of the aforementioned by independent inspection or otherwise. Although we make reasonable efforts to update our information, neither Carter Jonas LLP nor anyone in its employment or acting on its behalf makes any representations warranties or guarantees, whether express or implied, in relation to the property, or that the content in these particulars is accurate, complete or up to date. Our images only represent part of the property as it appeared at the time they were taken. If you require further information please contact us.

Classification L2 - Business Data