



**WATERMILL CLOSE, RICHMOND, TW10**  
£1,995 per month\*

**Carter Jonas**

# WATERMILL CLOSE, RICHMOND, TW10

A well presented two bedroom maisonette located on the first and second floor with its own private entrance door and lobby on the ground floor. Close to buses to Richmond and Kingston and local shops. Available beg Jan 2025.

A private entrance into a ground floor lobby leads to stairs up to the first floor of a bright double aspect lounge with bay and bench seat, arch through to a rear dining area and a fitted kitchen with gas hob, extractor hood and inbuilt oven. The second floor provides two double bedrooms each with inbuilt wardrobes and a newly refurbished bathroom with walk-in shower. There is access to useful storage loft.

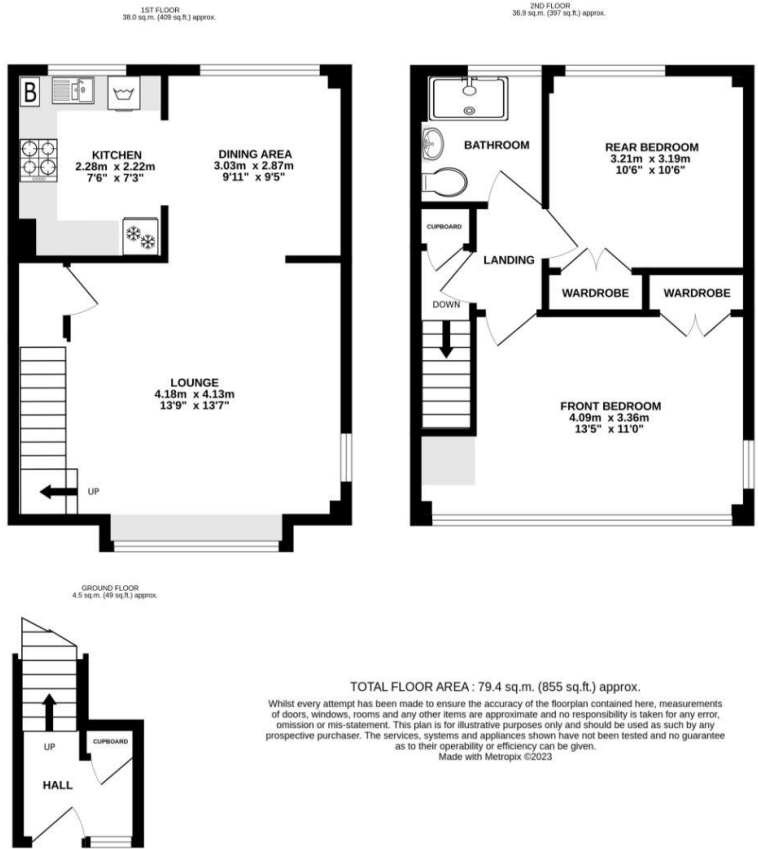
The property has a gas central heating system and all the windows are double glazed throughout.

Available furnished beginning Jan 2025.

- Council Tax Band = D
- One Weeks Deposit Required = £460.38
- Security Deposit = £2301.90
- Long Let
- 2 Bedrooms
- 2 Reception Rooms
- 1 Bathroom
- Furnished/Unfurnished
- 840 Approx Sq Ft
- EPC = C

Energy Efficiency Rating		
	Current	Potential
Very energy efficient - lower running costs		
(92-100) A		
(81-91) B		
(69-80) C	71	76
(55-68) D		
(39-54) E		
(21-38) F		
(1-20) G		
Not energy efficient - higher running costs		
England, Scotland & Wales EU Directive 2002/91/EC		

**Barnes Lettings 020 8878 1115**  
barnes@carterjonas.co.uk  
70 White Hart Lane, Barnes, SW13 0PZ



Exclusive UK affiliate of

**CHRISTIE'S**  
INTERNATIONAL REAL ESTATE  
Classification L2 - Business Data

## IMPORTANT INFORMATION

These particulars are for general information purposes only and do not represent an offer or contract or part of one. Carter Jonas or anyone in their employment has made every attempt to ensure that the particulars and other information provided are as accurate as possible and they are not intended to amount to advice on which you should rely as being factually accurate. Full information which may be relevant to your decision regarding the property can be found on the property listing on [carterjonas.co.uk](http://carterjonas.co.uk) or a separately available material information sheet, and we would advise you to confirm the details of any material information prior to any offer being submitted. You should not assume that the property has all necessary planning, building regulations or other consents and Carter Jonas has not tested any services, facilities, or equipment. Any measurements and distances given are approximate only. Where Carter Jonas has been provided with a floorplan by a third party, we cannot guarantee that the floorplan has been measured in accordance with IPMS. Purchasers or prospective tenants must satisfy themselves of all of the aforementioned by independent inspection or otherwise. Our images only represent part of the property as it appeared at the time they were taken and do not represent the furnishings included; these are confirmed in a separate inventory. If you require further information, please contact us. \*Administration fees may apply depending on tenancy type. Please contact your local branch for this information.