



CHANDOS HOUSE, 27-28 WESTGATE BUILDINGS, BA1 1EF
£1,200 per month*

Carter Jonas

AGE RESTRICTION OF OVER 65 - This one bedroom apartment is available to rent within the philanthropic St. Johns Foundation. Incredible location in central Bath, just a few steps from the historic baths. Age Restriction is 65 year minimum

- One bedroom city centre apartment
- Benefits from a lift, gated access and well-maintained communal gardens
- Over 65's only

THE PROPERTY

An elegant one bedroom second floor apartment with a spacious living room, separate kitchen, shower room and lift access.

FLAT 6 ON THE FLOORPLAN

This exciting development represents a complete refurbishment of the historic Chandos House building, and this flat is one of seven elegant, individual apartments. The property benefits from a lift, gated access with well-maintained gardens in the heart of the city of Bath. Chandos House offers elegant retirement living for over 65's in the picturesque and vibrant city centre of Bath.

Chandos House is superbly situated in the very centre of Bath, amongst the many restaurants, theatres and museums the city has to offer. Chandos House is located next to the Thermae Bath Spa and the 5* Gainsborough Hotel with its excellent restaurant and leisure facilities. Also, within short walking distance are The Theatre Royal, The Ustinov and The Egg Theatres.

LIVING AT CHANDOS HOUSE

A modern development in a historic setting:

At Chandos House, you will enjoy elegant living in a modern apartment within a tastefully renovated Grade II* listed building of historic significance. Chandos House is a gated community, allowing you peace of mind when it comes to security.



Attractive garden:

When the sun is shining, you will be able to enjoy access to Chandos Garden. This space will be the perfect place to catch up with your neighbours or relax with friends and family. Chandos Gardens will be managed and maintained by St John's Foundation.

ADDITIONAL INFORMATION

Council Tax: Band A EPC: Band D

Services: All mains services are connected

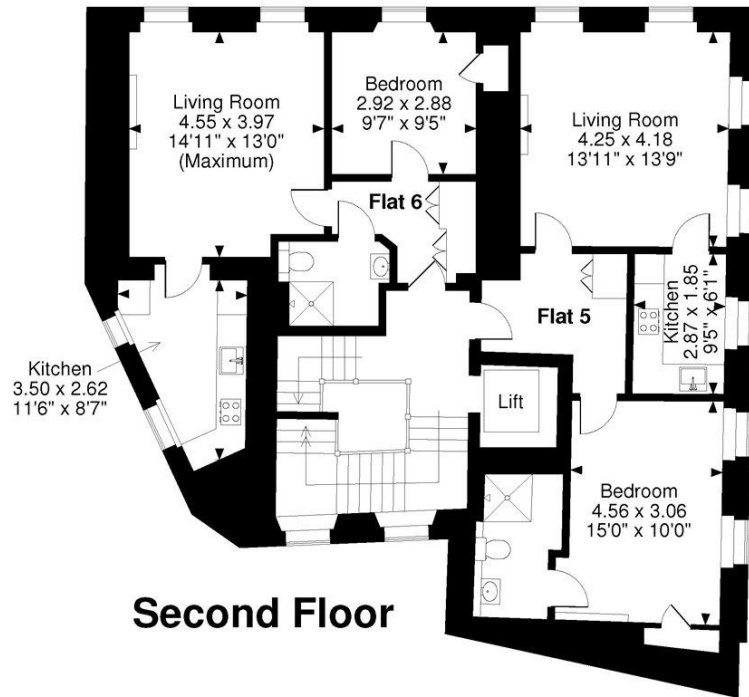
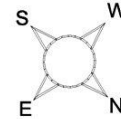
Check out the broadband on <https://www.ofcom.org.uk/phones-telecoms-and-internet/advice-for-consumers/advice/ofcom-checker>

ADDITIONAL INFORMATION

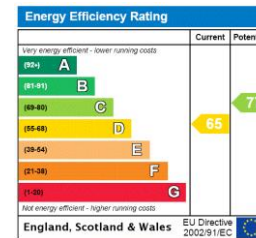
Offers	Available for a minimum term of 12 months longer terms will be considered
Viewing	Strictly by appointment
Local Authority	- Council Tax Band A



Chandos House
Approximate Gross Internal Area
Flat 5 = 559 sq ft / 52 sq m
Flat 6 = 500 sq ft / 46 sq m



FOR ILLUSTRATIVE PURPOSES ONLY - NOT TO SCALE
 The position & size of doors, windows, appliances and other features are approximate only.
 © ehous. Unauthorised reproduction prohibited. Drawing ref. dig/8320949/SS



T: 01225 747250

5-6 Wood Street, Bath, Somerset, BA1 2JQ

E: bath@carterjonas.co.uk



Exclusive UK affiliate of

CHRISTIE'S
 INTERNATIONAL REAL ESTATE

Classification L2 - Business Data

IMPORTANT INFORMATION

Our property particulars do not represent an offer or contract, or part of one. The information given is without responsibility on the part of the agents, seller(s) or lessor(s) and you should not rely on the information as being factually accurate about the property, its condition or its value. Neither Carter Jonas LLP nor anyone in its employment or acting on its behalf has authority to make any representation or warranty in relation to this property. We have not carried out a detailed survey, nor tested the services, appliances or fittings at the property. The images shown may only represent part of the property and are as they appeared at the time of being photographed. The areas, measurements and distances are approximate only. Where Carter Jonas have been provided with a floorplan by a third party, we can not guarantee that the floorplan has been measured in accordance with IPMS. Any reference to alterations or use does not mean that any necessary planning permission, building regulation or other consent has been obtained. The VAT position relating to the property may change without notice. Administration fees may apply depending on tenancy type. Please contact your local branch for this information.