



38 ST. JAMES'S SQUARE
Bath

Carter Jonas

FLAT 1, 38 ST. JAMES'S SQUARE, BATH, SOMERSET, BA1 2TU

A RARE OPPORTUNITY TO ACQUIRE A ONE BEDROOM APARTMENT OVERLOOKING ST JAMES'S SQUARE WITH PERMIT PARKING AND ACCESS TO THE PRIVATE COMMUNAL GARDENS.

Entrance hall • Open plan kitchen dining living room
• Balcony • Double bedroom • Shower room • Permit parking and access to private gardens

DESCRIPTION

This attractive first floor apartment comprises a large open plan kitchen dining living space with a magnificent bay window overlooking the square, and a private balcony off the kitchen, double bedroom, and bathroom. St. James's Square is a handsome Grade I listed Georgian Square situated on the northern side of Bath city centre. We are pleased to offer this first floor flat that offers the perfect blend of handsome period detail with contemporary finish.

The accommodation, which is beautifully presented, offers a double bedroom and a bathroom, with an impressive open plan kitchen, living and dining space with a splendid bow window enjoying a charming leafy aspect overlooking St. James's Square. Externally there is a key to the private gardens in the square along with on-street permit parking and free 2-hour visitor parking.

SITUATION

St James's Square is the prime Georgian Square in Bath and has excellent local amenities of a popular deli, award winning gastropub, chemist, florist, organic green grocers, hairdressers and supermarket. 5-star gym and spa facilities are available at the nearby Royal Crescent and Priory Hotels. Bath city centre is a short walk away with its excellent shopping, cultural, leisure and sporting facilities as well as Bath Spa Railway Station with main line access to Bristol Temple Meads (from 11 minutes) and London Paddington (from 76 minutes).



ADDITIONAL INFORMATION

Tenure: Leasehold, share of freehold (999 years from 16 April 1984)

Planning: Grade I Listed

Services: All mains services are connected

Service Charge: £100 per calendar month

Ground Rent: £10 per annum

Council Tax: Band D

Local Authority: Bath & North East Somerset Council

EPC: Band D

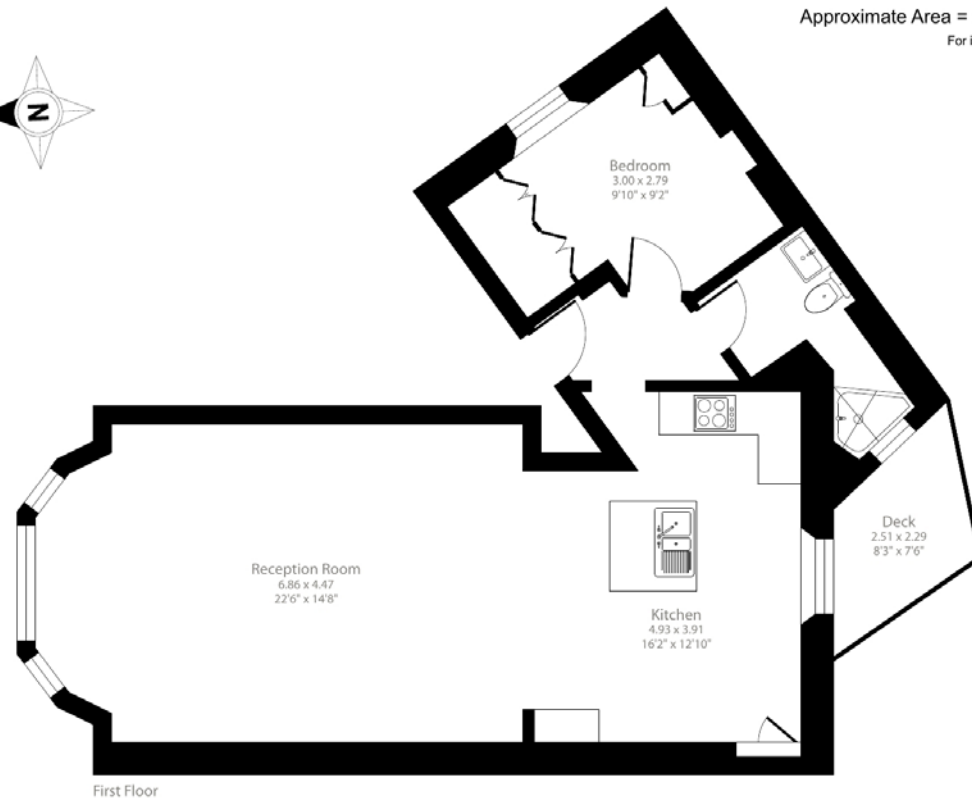
Viewing: Strictly by appointment with Carter Jonas.



St. James's Square, Bath, BA1

Approximate Area = 708 sq ft / 65.7 sq m

For identification only - Not to scale



First Floor



Floor plan produced in accordance with RICS Property Measurement Standards incorporating International Property Measurement Standards (IPMS2 Residential). © richcom 2024. Produced for Carter Jonas. REF: 1125065



Bath 01225 747250

bath@carterjonas.co.uk

5-6 Wood Street, Bath, BA1 2JQ

carterjonas.co.uk

Offices throughout the UK

Exclusive UK affiliate of

CHRISTIE'S
INTERNATIONAL REAL ESTATE

IMPORTANT INFORMATION

These particulars are for general information purposes only and do not represent an offer of contract or part of one. Carter Jonas has made every attempt to ensure that the particulars and other information provided are as accurate as possible and are not intended to amount to advice on which you should rely as being factually accurate. You should not assume that the property has all necessary planning, building regulations or other consents and Carter Jonas have not tested any services, facilities or equipment. Any measurements and distances given are approximate only. Purchasers must satisfy themselves of all of the aforementioned by independent inspection or otherwise. Although we make reasonable efforts to update our information, neither Carter Jonas LLP nor anyone in its employment or acting on its behalf makes any representations warranties or guarantees, whether express or implied, in relation to the property, or that the content in these particulars is accurate, complete or up to date. Our images only represent part of the property as it appeared at the time they were taken. If you require further information please contact us.