



MOUNTAIN BOWER, NORTH WRAXALL, SN14 7AJ

£1,950 per month*

Carter Jonas

A modern detached 4 bedroom, full of light and space with 3 bathrooms family home in the pretty and quiet hamlet of Mountain Bower, renovated and modernised within the last few years with courtyard garden and driveway parking for numerous vehicles.

- Living Room
- Kitchen/Breakfast Room
- Utility Room
- Office/Study
- 4 Bedrooms
- 3 Bathrooms
- Courtyard garden

THE PROPERTY

A modern detached family home which has been the subject of renovation within the last few years. Situated in the quiet, rural hamlet of Mountain Bower, some 8 miles to the north of Bath and near to the villages of Marshfield, West Kington and North Wraxall. Surrounded by rural views and country walks, this lovely family home offers accommodation of living room, large kitchen/dining room, kitchen having appliances of oven with hob, dishwasher, fridge/freezer, washing machine and tumble dryer, study/office, utility room, 4 bedrooms and 3 bathrooms, (one of which is on the ground floor). The ground floor has underfloor heating throughout. There is a terraced paved garden to the rear and driveway parking for numerous vehicles to the front. The perfect family location for those wanting the country life. Local amenities of village shops and Pubs are half a mile away in Marshfield and offering good access to M4 junction 18 (2 miles to the north), Chippenham (8 miles to the east), Bath (9 miles to the south) and Bristol (17 miles to the west). Offered unfurnished. Available May 2024. Council Tax Band C. EPC Band E.

Available for an initial 12 month tenancy.

EPC Rating E. Council Tax Band C (please see North Wilts District Council for current cost)

Mains electric, LPG gas and metered mains water.

Mains drainage.

Parking: for up to 4 vehicles to the front of the property on the driveway.



Internet & Mobile: Further information on availability and speeds can be found on the Ofcom website.

At a rent of £1950 per calendar month:
Holding deposit of 1 week's rent £450.00
Security deposit of 5 weeks rent £2,250.00

OUTSIDE

Paved rear garden.

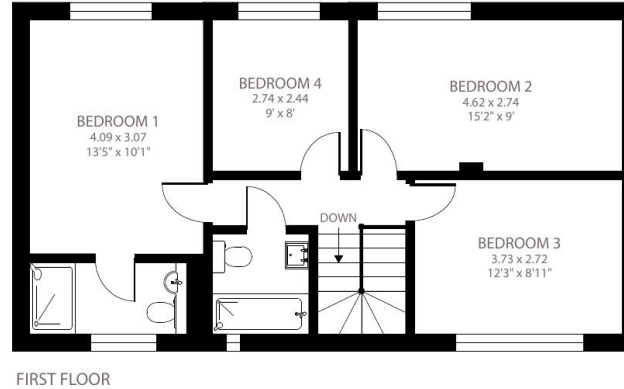
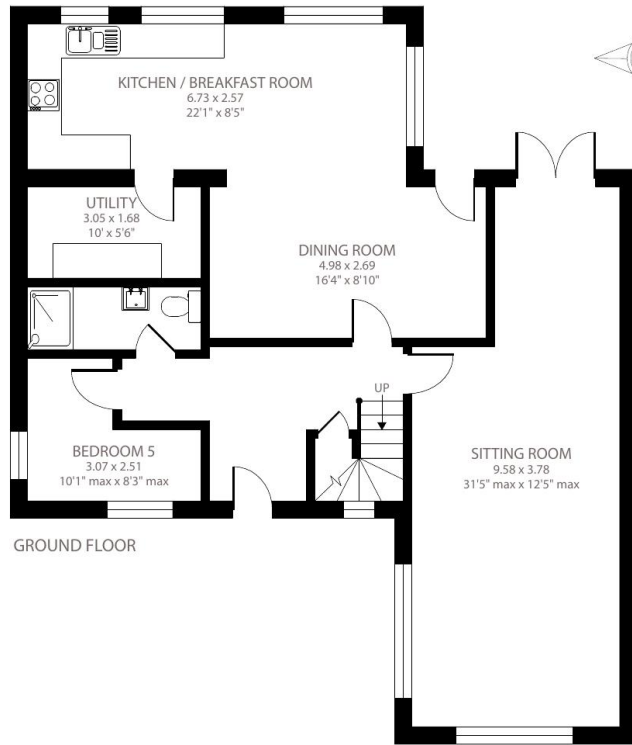
ADDITIONAL INFORMATION

Offers	Available for a minimum term of 12 months longer terms will be considered
Viewing	Strictly by appointment
Local Authority	- Council Tax Band C
Directions	



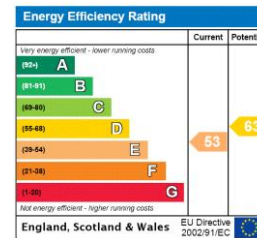
Beechers, Mountain Bower, North Wraxall, Chippenham, SN14

Approximate Area = 1641 sq ft / 152.4 sq m
For identification only - Not to scale



Certified
Property
Measurer

Floor plan produced in accordance with RICS Property Measurement Standards incorporating International Property Measurement Standards (IPMS2 Residential). © nlcocom 2023. Produced for Carter Jonas. REF: 1062642



T: 01225 747250

5-6 Wood Street, Bath, Somerset, BA1 2JQ

E: bath@carterjonas.co.uk

A member of



Exclusive UK affiliate of

CHRISTIE'S
INTERNATIONAL REAL ESTATE

Classification L2 - Business Data

IMPORTANT INFORMATION

These particulars are for general information purposes only and do not represent an offer or contract or part of one. Carter Jonas or anyone in their employment has made every attempt to ensure that the particulars and other information provided are as accurate as possible and they are not intended to amount to advice on which you should rely as being factually accurate. Full information which may be relevant to your decision regarding the property can be found on the property listing on carterjonas.co.uk or a separately available material information sheet, and we would advise you to confirm the details of any material information prior to any offer being submitted. You should not assume that the property has all necessary planning, building regulations or other consents and Carter Jonas has not tested any services, facilities, or equipment. Any measurements and distances given are approximate only. Where Carter Jonas has been provided with a floorplan by a third party, we cannot guarantee that the floorplan has been measured in accordance with IPMS. Purchasers or prospective tenants must satisfy themselves of all of the aforementioned by independent inspection or otherwise. Our images only represent part of the property as it appeared at the time they were taken and do not represent the furnishings included; these are confirmed in a separate inventory. If you require further information, please contact us. *Administration fees may apply depending on tenancy type. Please contact your local branch for this information.