



FLAT 2 , KINGS COURT , PARSONAGE LANE, BATH, BA1
£2,100 per month*

Carter Jonas

A 4th floor, recently renovated Penthouse apartment in central Bath with 2 bedrooms, 2 bathrooms and large terrace with city views.

- Open plan Living Room/kitchen
- Two Bedrooms
- Two Bathrooms
- Storage cupboards
- Terrace with wonderful city views

THE PROPERTY

A unique loft style apartment which has been the subject of complete renovation within the last two years. The apartment is situated on the 4th floor of Kings Court (with lift access) in Parsonage Lane right in the heart of Bath City Centre. The open plan accommodation comprises living room/kitchen with appliances of oven with hob, dishwasher, fridge/freezer and washing machine and tumble dryer housed in a laundry cupboard. The living room has access out onto an east facing balcony terrace with views looking towards Bath Abbey and the City. A fabulous space for al fresco dining during the summer months. There are 2 bedrooms, one having en suite shower room and a separate bathroom. Both bedrooms have access out onto an inner courtyard and benefit from fitted wardrobes. This apartment would make a really wonderful home for those wanting to experience city life and benefits from the most wonderful city views. Available early September offered unfurnished.

EPC Exemption as Listed. Council Tax Band E. (Please see Bath & North East Somerset council website).

Holding deposit of one week's rent = £484.61 (deducted from first month's rent) . Five weeks' deposit = £2423.07

Mains electric, gas and metered mains water.

Note: No parking permits available for this property.

Internet & Mobile: Further information on availability and speeds can be found on the Ofcom website.



OUTSIDE

Terrace and internal courtyard space.

ADDITIONAL INFORMATION

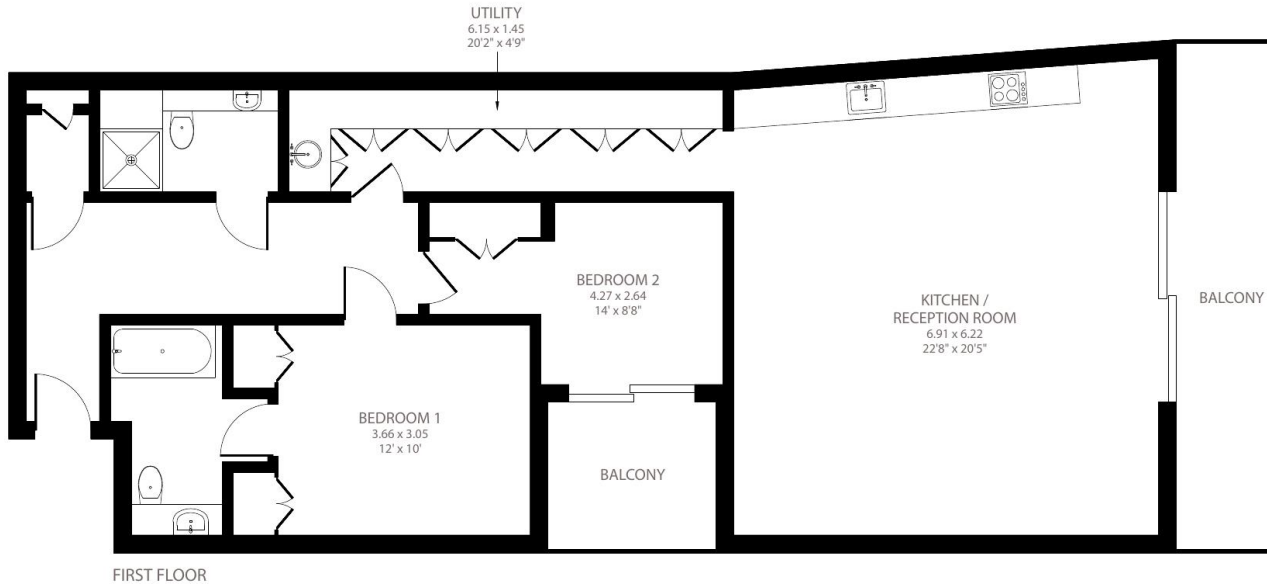
Offers	Available for a minimum term of 12 months longer terms will be considered
Viewing	Strictly by appointment
Local Authority	- Council Tax Band E
Directions	



Parsonage Lane, Bath, BA1

Approximate Area = 1060 sq ft / 98.5 sq m

For identification only - Not to scale



FIRST FLOOR



Certified
Property
Measurer

Floor plan produced in accordance with RICS Property Measurement Standards incorporating International Property Measurement Standards (IPMS2 Residential). © nlcocom 2022. Produced for Carter Jonas. REF: 1011520



T: 01225 747250

5-6 Wood Street, Bath, Somerset, BA1 2JQ

E: bath@carterjonas.co.uk

A member of



Exclusive UK affiliate of

CHRISTIE'S
INTERNATIONAL REAL ESTATE

Classification L2 - Business Data

IMPORTANT INFORMATION

These particulars are for general information purposes only and do not represent an offer or contract or part of one. Carter Jonas or anyone in their employment has made every attempt to ensure that the particulars and other information provided are as accurate as possible and they are not intended to amount to advice on which you should rely as being factually accurate. Full information which may be relevant to your decision regarding the property can be found on the property listing on carterjonas.co.uk or a separately available material information sheet, and we would advise you to confirm the details of any material information prior to any offer being submitted. You should not assume that the property has all necessary planning, building regulations or other consents and Carter Jonas has not tested any services, facilities, or equipment. Any measurements and distances given are approximate only. Where Carter Jonas has been provided with a floorplan by a third party, we cannot guarantee that the floorplan has been measured in accordance with IPMS. Purchasers or prospective tenants must satisfy themselves of all of the aforementioned by independent inspection or otherwise. Our images only represent part of the property as it appeared at the time they were taken and do not represent the furnishings included; these are confirmed in a separate inventory. If you require further information, please contact us. *Administration fees may apply depending on tenancy type. Please contact your local branch for this information.