



**28A BROAD STREET**  
Bath

**Carter Jonas**



## BROAD STREET, BATH, SOMERSET, BA1 5LW

- Bath Abbey 0.3 miles
- Bath Spa Station 0.6 miles (London Paddington from 82 minutes and Bristol Temple Meads from 11 minutes)

Private front door • Private stairwell to accommodation  
• Landing • Living room • Open plan kitchen/dining room • Four bedrooms (sleeps 12) • Two bath/shower rooms

### DESCRIPTION

This is an excellent, well presented maisonette, spanning two floors of this period central Bath property. It benefits from its own private front door leading off the street to a private stairwell to the accommodation. The lease wording allows for holiday rental and as such has been running as a successful investment for the present owners.

It has an abundance of period features with large Venetian windows, fireplaces and the grand proportions one would expect. Along with this, the main floor has a superb open plan living space leading through to the large kitchen/dining room – an excellent entertaining space. Across the hall is a bedroom and a shower room. Wide stairs lead up to three further bedrooms and a further shower room.

### SITUATION

The property is in an excellent central Bath position, on the corner of Broad Street and Saracen Street, within one of the most historic and architecturally renowned Georgian areas in Bath just around the corner from The Assembly Rooms, The Circus and Royal Crescent. The city centre is directly on your doorstep with an amazing array of shopping, restaurants, bars, cafes, museums, galleries, classic historic architecture and Waitrose is approx. 100 metres along the road.

**A SUBSTANTIAL AND VERY CENTRAL, SELF-CONTAINED MAISONETTE PRESENTLY RUN AS A SUCCESSFUL HOLIDAY LET BUSINESS.**





There are excellent communications and approximately 10 miles from Junction 18 of the M4. There are high-speed train services from Bath Spa Railway Station to London Paddington (approximately 90 minutes).

## ADDITIONAL INFORMATION

**Tenure:** Leasehold (125 years from June 2013)

**Planning:** The property is Listed Grade II.

**Services:** Mains gas, electricity, water and drainage are connected.

**Local Authority:** Bath and North East Somerset Council.

**Council Tax:** Band D

**EPC:** TBC

**Viewing:** Strictly by appointment with Carter Jonas.

The current owners are happy to discuss selling forward bookings, furniture and website, with a secure online payment facility within the sale of the property.

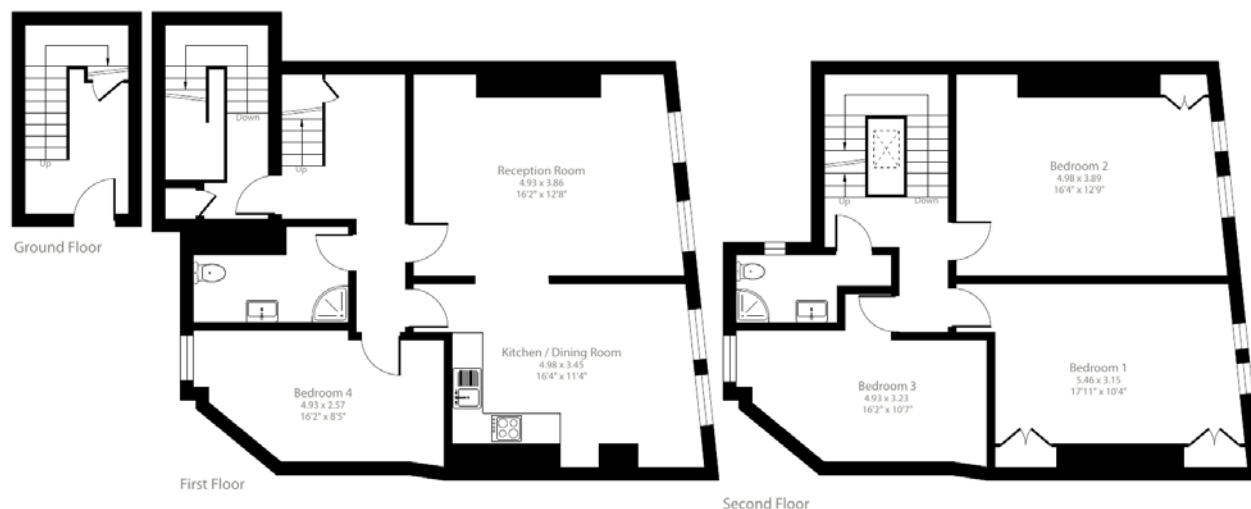




## Broad Street, Bath, BA1

Approximate Area = 1619 sq ft / 150.4 sq m

For identification only - Not to scale



Floor plan produced in accordance with RICS Property Measurement Standards incorporating International Property Measurement Standards (IPMS2 Residential). © richcom 2024. Produced for Carter Jonas. REF: 1181480

**Bath 01225 747250**

bath@carterjonas.co.uk

5-6 Wood Street, Bath, BA1 2JQ

**carterjonas.co.uk**

Offices throughout the UK

*Exclusive UK affiliate of*

**CHRISTIE'S**  
INTERNATIONAL REAL ESTATE



### IMPORTANT INFORMATION

These particulars are for general information purposes only and do not represent an offer of contract or part of one. Carter Jonas has made every attempt to ensure that the particulars and other information provided are as accurate as possible and are not intended to amount to advice on which you should rely as being factually accurate. You should not assume that the property has all necessary planning, building regulations or other consents and Carter Jonas have not tested any services, facilities or equipment. Any measurements and distances given are approximate only. Purchasers must satisfy themselves of all of the aforementioned by independent inspection or otherwise. Although we make reasonable efforts to update our information, neither Carter Jonas LLP nor anyone in its employment or acting on its behalf makes any representations warranties or guarantees, whether express or implied, in relation to the property, or that the content in these particulars is accurate, complete or up to date. Our images only represent part of the property as it appeared at the time they were taken. If you require further information please contact us.