





## MONKSWAY, CORSHAM ROAD, LACOCK, WILTSHIRE, SN15 2LZ

**A MODERN, DETACHED FOUR BEDROOM PROPERTY SET IN LARGE GARDENS ON THE EDGE OF THIS HISTORIC VILLAGE.**

- Chippenham and Corsham 3 miles
- Bath 14 miles
- M4 (J17) 3.5 miles
- London Paddington from 75 minutes from Chippenham Station

Reception hall • Sitting room • Kitchen • Dining room • Study • Four bedrooms • Four bath/shower rooms (three en suite) • Utility room • Cloakroom

Large gardens • Secure driveway parking

### DESCRIPTION

Approached via a gated entrance leading through to the property which has been completely re-modelled and renovated to provide modern, light and bright accommodation across two floors. The open hallway leads through to the living room with a wood burning stove, the study at the rear of the house, and a fabulous kitchen/dining room. Also on the ground floor is a practical utility room and a fourth bedroom with en suite shower room.

The first floor has three further bedrooms, two with en suite bathrooms, and a further family bathroom.

The kitchen has integrated appliances with two ovens, induction hob, overhead extractor hood, and a fridge/freezer whilst the utility room has a washing machine and tumble dryer. The kitchen is open through to the dining room which benefits from two sets of bi-fold doors that fully open out onto the rear south facing terrace and garden.

Externally there is a large terrace to the rear leading on to a huge, enclosed garden which backs onto an open field. The gated entrance at the front leads to a large driveway with parking for approximately four or five vehicles.









### SITUATION

Lacock is a popular backdrop for film makers of period and costume dramas such as Cranford Chronicles, Harry Potter and Pride and Prejudice. The picturesque National Trust village has much to offer new arrivals including five inns, a village store/post office, well reputed primary school, Lacock Abbey with the Fox Talbot Photography Museum and fabulous surrounding countryside, providing excellent walking and riding routes.

Bath, Bristol and Swindon are all within easy reach. Schools in the area are very well regarded in both the public and private sectors. The centre of the National Trust village of Lacock is less than half a mile, and the pretty town of Corsham is 3 miles to the west and Bath city centre is 14 miles to the west. Junction 17 of the M4 is 3.5 miles to the north.

### ADDITIONAL INFORMATION

**Tenure:** Freehold

**Planning:** The property is not subject to a listing.

**Services:** All mains services are connected.

**Council Tax:** Band G

**Local Authority:** Wiltshire Council.

**EPC:** Band C

**Viewings:** Strictly by appointment with Carter Jonas.





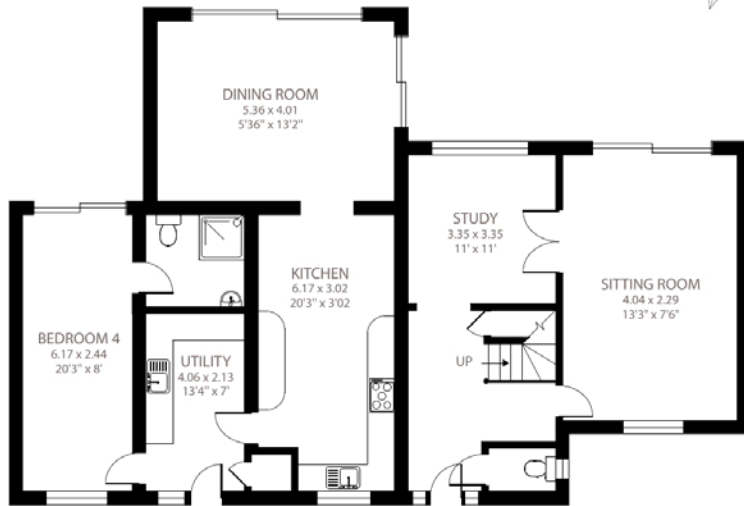




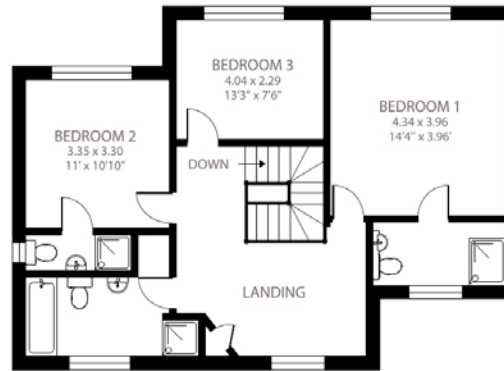
## Corsham Road, Lacock, Chippenham, SN15

Approximate Area = 2165 sq ft / 201.1 sq m

For identification only - Not to scale



GROUND FLOOR



FIRST FLOOR



Floor plan produced in accordance with RICS Property Measurement Standards incorporating International Property Measurement Standards (IPMS2 Residential). © nichecom 2023. Produced for Carter Jonas. REF: 951485



Bath 01225 747250

bath@carterjonas.co.uk

5-6 Wood Street, Bath, BA1 2JQ

**carterjonas.co.uk**

Offices throughout the UK

*Exclusive UK affiliate of*

**CHRISTIE'S**  
INTERNATIONAL REAL ESTATE

### IMPORTANT INFORMATION

These particulars are for general information purposes only and do not represent an offer of contract or part of one. Carter Jonas has made every attempt to ensure that the particulars and other information provided are as accurate as possible and are not intended to amount to advice on which you should rely as being factually accurate. You should not assume that the property has all necessary planning, building regulations or other consents and Carter Jonas have not tested any services, facilities or equipment. Any measurements and distances given are approximate only. Purchasers must satisfy themselves of all of the aforementioned by independent inspection or otherwise. Although we make reasonable efforts to update our information, neither Carter Jonas LLP nor anyone in its employment or acting on its behalf makes any representations warranties or guarantees, whether express or implied, in relation to the property, or that the content in these particulars is accurate, complete or up to date. Our images only represent part of the property as it appeared at the time they were taken. If you require further information please contact us.