



CHANDOS HOUSE, 27-28 WESTGATE BUILDINGS, BA1 1EF
£1,350 per month*

Carter Jonas

AGE RESTRICTION OF OVER 55 - This one bedroom apartment is available to rent within the philanthropic St. Johns Foundation. Incredible location in central Bath, just a few steps from the historic baths. Age Restriction is 55 year minimum

- Seven elegant city centre apartments
- Benefits from a lift, gated access and well-maintained communal gardens
- Long-lease apartment
- Upon request, access to St John's Independent Living Service which delivers a 24-hour care and support service

THE PROPERTY

An elegant one bedroom second floor apartment with a spacious living room, separate kitchen, shower room and lift access.

FLAT 6 ON THE FLOORPLAN

This exciting development represents a complete refurbishment of the historic Chandos House building, creating seven elegant, individual apartments. The property benefits from a lift, gated access with well-maintained gardens in the heart of the city of Bath. Chandos House offers elegant retirement living for over 65's in the picturesque and vibrant city centre of Bath.

Chandos House is superbly situated in the very centre of Bath, amongst the many restaurants, theatres and museums the city has to offer. Chandos House is located next to the Thermae Bath Spa and the 5* Gainsborough Hotel with its excellent restaurant and leisure facilities. Also, within short walking distance are The Theatre Royal, The Ustinov and The Egg Theatres.

LIVING AT CHANDOS HOUSE

A modern development in a historic setting:

At Chandos House, you will enjoy elegant living in a modern apartment within a tastefully renovated Grade II* listed building of historic significance. Chandos House is a gated community, allowing you peace of mind when it comes to security.

Attractive garden:



When the sun is shining, you will be able to enjoy access to Chandos Garden. This space will be the perfect place to catch up with your neighbours or relax with friends and family. Chandos Gardens will be managed and maintained by St John's Foundation.

ADDITIONAL INFORMATION

Council Tax: Band A EPC: Band D

Services: All mains services are connected

Check out the broadband on <https://www.ofcom.org.uk/phones-telecoms-and-internet/advice-for-consumers/advice/ofcom-checker>

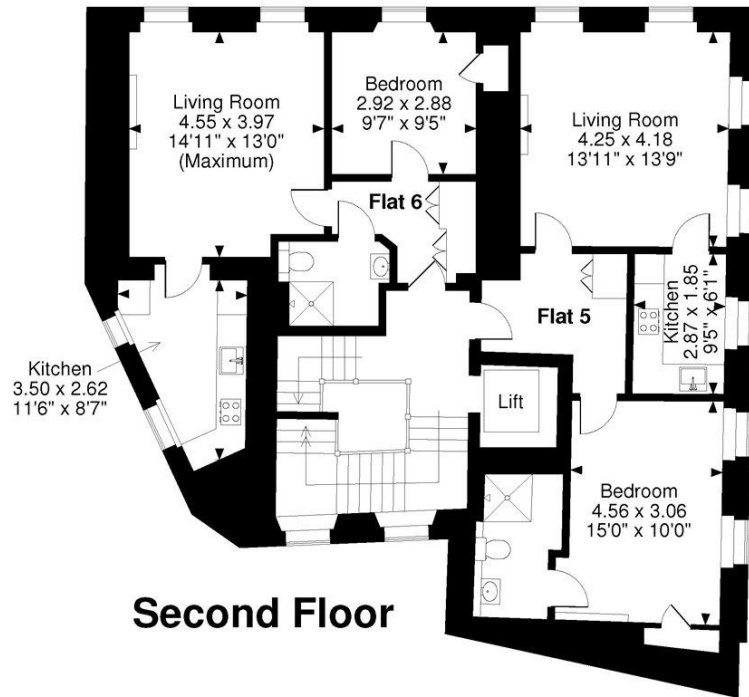
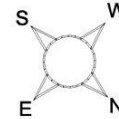
Holding deposit of one week's rent (deducted from the first month's

ADDITIONAL INFORMATION

Offers	Available for a minimum term of 12 months longer terms will be considered
Viewing	Strictly by appointment
Local Authority	- Council Tax Band A
Directions	



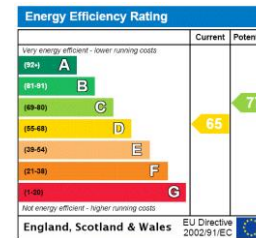
Chandos House
Approximate Gross Internal Area
Flat 5 = 559 sq ft / 52 sq m
Flat 6 = 500 sq ft / 46 sq m



Second Floor

FOR ILLUSTRATIVE PURPOSES ONLY - NOT TO SCALE

The position & size of doors, windows, appliances and other features are approximate only.
 © ehous. Unauthorised reproduction prohibited. Drawing ref. dig/8320949/SS



T: 01225 747250

5-6 Wood Street, Bath, Somerset, BA1 2JQ

E: bath@carterjonas.co.uk



Exclusive UK affiliate of

CHRISTIE'S
 INTERNATIONAL REAL ESTATE

Classification L2 - Business Data

IMPORTANT INFORMATION

These particulars are for general information purposes only and do not represent an offer or contract or part of one. Carter Jonas or anyone in their employment has made every attempt to ensure that the particulars and other information provided are as accurate as possible and they are not intended to amount to advice on which you should rely as being factually accurate. Full information which may be relevant to your decision regarding the property can be found on the property listing on carterjonas.co.uk or a separately available material information sheet, and we would advise you to confirm the details of any material information prior to any offer being submitted. You should not assume that the property has all necessary planning, building regulations or other consents and Carter Jonas has not tested any services, facilities, or equipment. Any measurements and distances given are approximate only. Where Carter Jonas has been provided with a floorplan by a third party, we cannot guarantee that the floorplan has been measured in accordance with IPMS. Purchasers or prospective tenants must satisfy themselves of all of the aforementioned by independent inspection or otherwise. Our images only represent part of the property as it appeared at the time they were taken and do not represent the furnishings included; these are confirmed in a separate inventory. If you require further information, please contact us. *Administration fees may apply depending on tenancy type. Please contact your local branch for this information.