



**BELVEDERE, BATH, BA1 5ED**  
£2,500 per month\*

**Carter Jonas**



## 6 BELVEDERE, BATH, SOMERSET, BA1 5ED

- Living Room
- Kitchen/Dining Room
- Utility Room
- Storage Room
- 3 Bedrooms
- 1 Bathroom
- Cloakroom

### THE PROPERTY

Belvedere is an elegant, renovated Bath townhouse, perfectly located in the heart of Bath and ideally situated for exploring this beautiful historic City. Arranged over 4 floors, this pretty house consists of kitchen/dining room on the lower ground floor, living room on the ground floor with door to rear courtyard, double bedroom and bathroom with bath and separate shower on the first floor and two further double bedrooms and a separate WC on the second floor. The kitchen has a Smeg fridge, hob, cooker, and dishwasher,. Behind the dining area is a large vaulted utility space with 8kg washing machine and tumble dryer and recycling bins. There are gorgeous city and chimney pot views towards the church spire at the rear. To the rear is a sunny courtyard. Everything Bath City centre has to offer is on the doorstep. Would suit a professional couple or small family or sharers. Offered furnished, part furnished or unfurnished and available now.

Available for an initial 6 month tenancy.

EPC Rating D. Council Tax Band D (please see Bath & North East Somerset)

Mains electric, gas and mains water.

Parking: There is an opportunity for one parking permit in central zone.

Internet & Mobile: Further information on availability and speeds can be found on the Ofcom website.

A stylish central Bath townhouse on the lower Lansdown slopes with 3 bedrooms, family bathroom, large kitchen dining room, utility and storage room and a secure courtyard with seating. This city home is available furnished, part furnished or unfurnished.

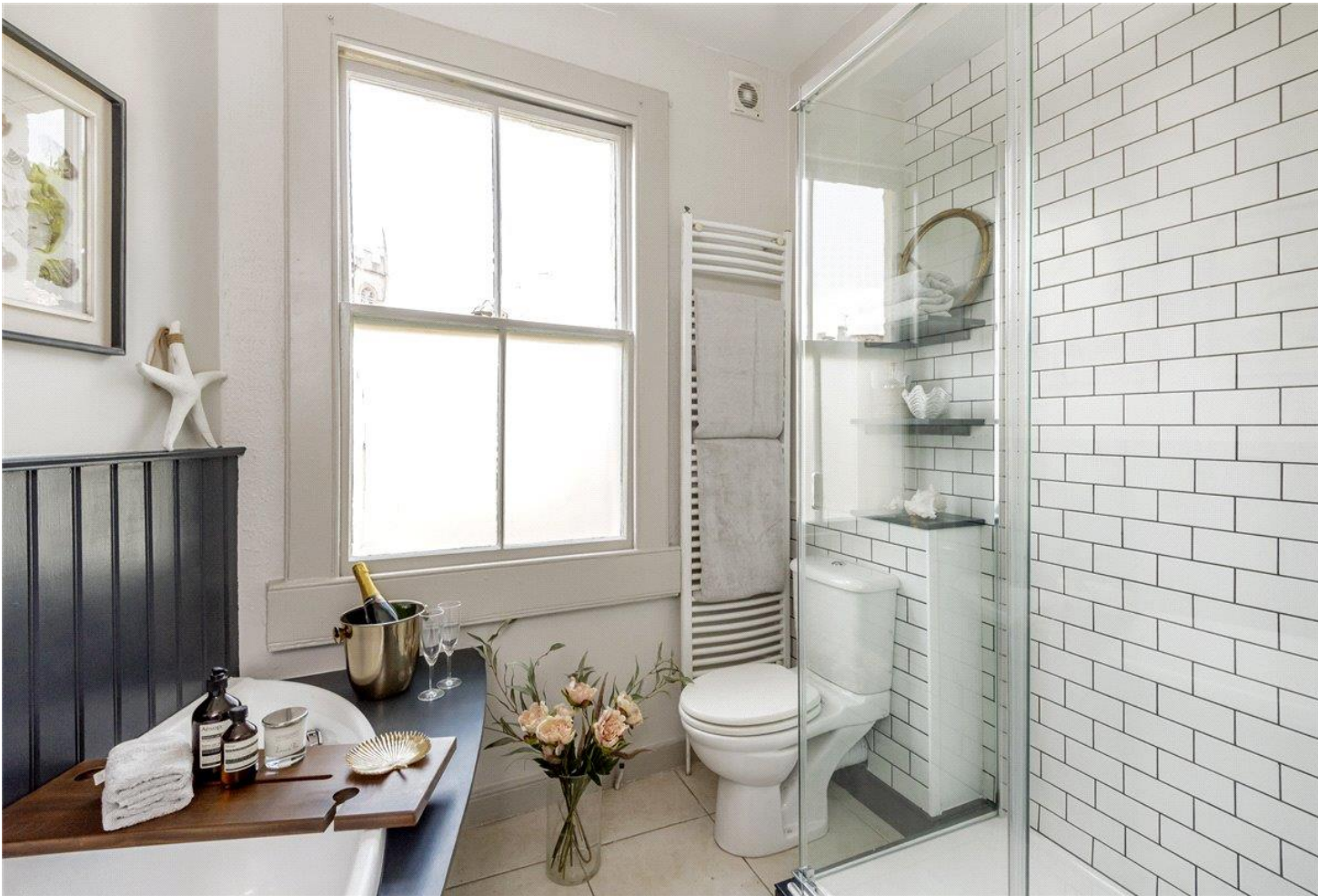




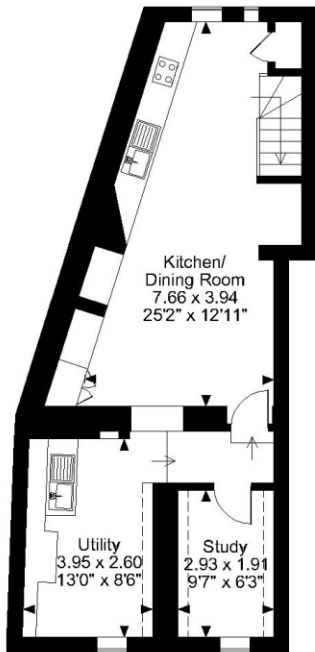
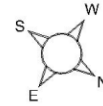
At a rent of £2500 per calendar month: Holding deposit of 1 week's rent £576.92 Security deposit of 5 weeks rent £2,884.61

**ADDITIONAL INFORMATION**

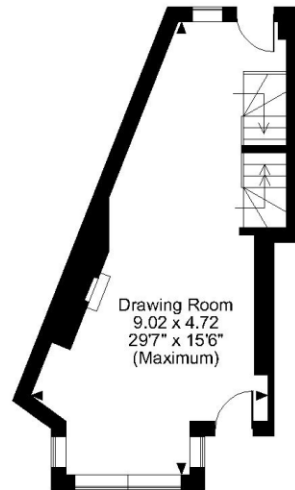
Offers	Available for a minimum term of 12 months longer terms will be considered
Viewing	Strictly by appointment
Local Authority	- Council Tax Band D
Directions	



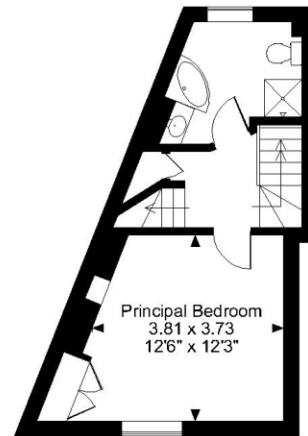
**Belvedere, Bath**  
Approximate Gross Internal Area  
1,421 sq ft / 132 sq m



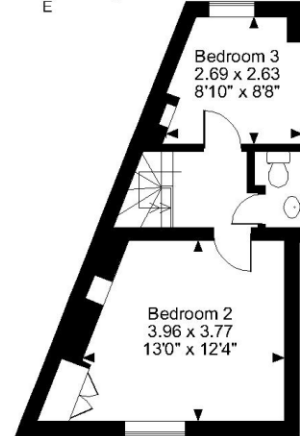
**Lower Ground Floor**



**Ground Floor**



**First Floor**



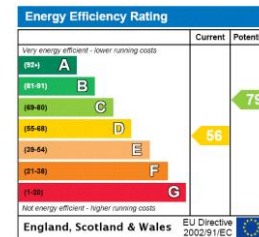
**Second Floor**

**FOR ILLUSTRATIVE PURPOSES ONLY - NOT TO SCALE**

The position & size of doors, windows, appliances and other features are approximate only.

□ □ □ □ Denotes restricted head height

© ehous. Unauthorised reproduction prohibited. Drawing ref. dig/8495319/SS



**T: 01225 747250**

5-6 Wood Street, Bath, Somerset, BA1 2JQ

E: bath@carterjonas.co.uk



*Exclusive UK affiliate of*

**CHRISTIE'S**  
INTERNATIONAL REAL ESTATE

Classification L2 - Business Data

**IMPORTANT INFORMATION**

These particulars are for general information purposes only and do not represent an offer or contract or part of one. Carter Jonas or anyone in their employment has made every attempt to ensure that the particulars and other information provided are as accurate as possible and they are not intended to amount to advice on which you should rely as being factually accurate. Full information which may be relevant to your decision regarding the property can be found on the property listing on [carterjonas.co.uk](http://carterjonas.co.uk) or a separately available material information sheet, and we would advise you to confirm the details of any material information prior to any offer being submitted. You should not assume that the property has all necessary planning, building regulations or other consents and Carter Jonas has been tested any services, facilities, or equipment. Any measurements and distances given are approximate only. Where Carter Jonas has been provided with a floorplan by a third party, we cannot guarantee that the floorplan has been measured in accordance with IPMS. Purchasers or prospective tenants must satisfy themselves of all of the aforementioned by independent inspection or otherwise. Our images only represent part of the property as it appeared at the time they were taken and do not represent the furnishings included; these are confirmed in a separate inventory. If you require further information, please contact us. \*Administration fees may apply depending on tenancy type. Please contact your local branch for this information.