



**BATH ROAD, COLERNE, SN14 8AT**  
£3,500 per month\*

**Carter Jonas**



---

**A wonderful detached family home with 4 bedrooms and 2 bathrooms, 7 miles north east of Bath in Colerne with marvellous south facing views, gardens, driveway and garaging.**

- Hallway
- Utility Room
- Cloakroom
- Open plan Kitchen/Living Room
- Sitting Room
- 4 Bedrooms
- 2 Bathrooms

#### **THE PROPERTY**

Primrose House is an individually designed detached family home situated north east of Bath on the outskirts of the village of Colerne. The property is set over two floors and the front door leads to the hallway which leads to utility room, cloakroom and through to Kitchen/Dining Room. The kitchen appliances of "Everhot" oven, run by electricity, dishwasher and fridge/freezer, there is also a water softener. The kitchen is open plan to the dining room which has a woodburner. The sitting room is off the kitchen/dining room. The kitchen/dining room benefits from a wonderful floor to ceiling double height glass wall, having bi-fold doors with windows above, maximising the south facing light and views. From the hallway, stairs rise to the first floor, where there is a galleried landing space set up with fixed desk complete with desk lights, this space overlooks the dining room area below. Off the landing are four bedrooms, one with en suite shower room and a further family bathroom having bath with separate shower. Primrose House sits within it's own gardens having driveway access both from the Bannerdown Road and from the rear road. There are also two garages and driveway parking for numerous vehicles. This really is the most wonderful family home. Available for an initial 12 month tenancy.

EPC Rating C. Council Tax Band F (please see Wiltshire Council Council website for current cost) Mains electric, and metered mains water. Oil heating. Parking: for numerous vehicles on the driveway adjacent to the house and in the two garages.





Internet & Mobile: Further information on availability and speeds can be found on the Ofcom website.

At a rent of £3500 per calendar month: Holding deposit of 1 week's rent £807.69 (taken from first month's rent) Security deposit of 5 weeks rent £4038.46

**ADDITIONAL INFORMATION**

Offers	Available for a minimum term of 12 months longer terms will be considered
Viewing	Strictly by appointment
Local Authority	- Council Tax Band F
Directions	





# Primrose House, Bath Road, Colerne, Chippenham, SN14

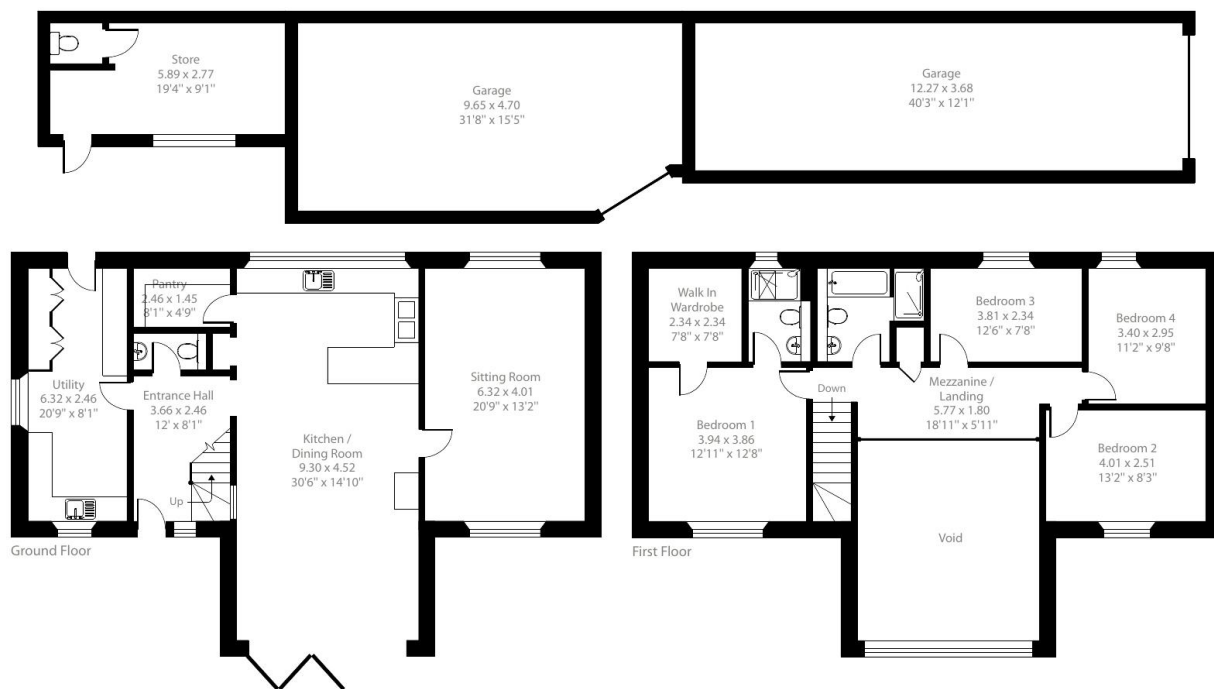
Approximate Area = 1957 sq ft / 181.8 sq m (excludes void area)

Garages = 975 sq ft / 90.6 sq m

Store = 176 sq ft / 16.3 sq m

Total = 3108 sq ft / 288.7 sq m

For identification only - Not to scale



Floor plan produced in accordance with RICS Property Measurement 2nd Edition, Incorporating International Property Measurement Standards (IPMS2 Residential). © nlcocom 2025. Produced for Carter Jonas. REF: 1249933



## IMPORTANT INFORMATION

These particulars are for general information purposes only and do not represent an offer or contract or part of one. Carter Jonas or anyone in their employment has made every attempt to ensure that the particulars and other information provided are as accurate as possible and they are not intended to amount to advice on which you should rely as being factually accurate. Full information which may be relevant to your decision regarding the property can be found on the property listing on [carterjonas.co.uk](http://carterjonas.co.uk) or a separately available material information sheet, and we would advise you to confirm the details of any material information prior to any offer being submitted. You should not assume that the property has all necessary planning, building regulations or other consents and Carter Jonas has not tested any services, facilities, or equipment. Any measurements and distances given are approximate only. Where Carter Jonas has been provided with a floorplan by a third party, we cannot guarantee that the floorplan has been measured in accordance with IPMS. Purchasers or prospective tenants must satisfy themselves of all of the aforementioned by independent inspection or otherwise. Our images only represent part of the property as it appeared at the time they were taken and do not represent the furnishings included; these are confirmed in a separate inventory. If you require further information, please contact us. \*Administration fees may apply depending on tenancy type. Please contact your local branch for this information.

T: 01225 747250

5-6 Wood Street, Bath, Somerset, BA1 2JQ

E: [bath@carterjonas.co.uk](mailto:bath@carterjonas.co.uk)

A member of



Exclusive UK affiliate of

**CHRISTIE'S**  
INTERNATIONAL REAL ESTATE

Classification L2 - Business Data