



**2 RIVER PLACE, BATH, BA2 1AZ**  
£1,750 per month\*

**Carter Jonas**



---

## A well presented ground floor two bedroom apartment with off street parking space and courtyard to the west of the City Centre offered furnished.

- Ground Floor
- 2 Bedrooms
- 1 Bathroom
- Cloakroom
- Open plan living/dining/kitchen
- Courtyard
- Off Street parking

### THE PROPERTY

River Place is an architect designed development of just 14 apartments in a two-storey building. A fantastic opportunity to rent a furnished, spacious two-bedroom apartment situated a short distance from Bath City Centre. This well presented property situated on the ground floor comprises entrance hall, two double bedrooms, bathroom with shower over bath, open plan kitchen/living room/dining room and a cloakroom with washing machine. The kitchen has integrated appliances of oven with hob, fridge/freezer and dishwasher. There is the wonderful benefit of an allocated parking space and a courtyard which is accessed from double doors in the living room.

River Place is situated on the west side of Bath in a level location, adjacent to the River Avon and with easy access to a range of local retail outlets including M&S foodhall as well as being on a regular bus service to the City Centre and the bus route from Bath University and Bath Spa University, together with Oldfield Park local Railway Station which is situated within easy walking distance. Available now.

Available for an initial 12 month tenancy.

EPC Rating C. Council Tax Band C (please see Bath & North East Somerset website for current cost)

Mains electric, and mains water. Electric heating.

Parking: one off street parking space situated just to the left of the courtyard.





Internet & Mobile: Further information on availability and speeds can be found on the Ofcom website.

At a rent of £1750 per calendar month: Holding deposit of 1 week's rent £403.84 (deducted from first month's rent). Security deposit of 5 weeks rent £2019.23

**OUTSIDE**

**Courtyard and one off-street parking**

**ADDITIONAL INFORMATION**

Offers	Available for a minimum term of 12 months longer terms will be considered
Viewing	Strictly by appointment
Local Authority	- Council Tax Band C
Directions	

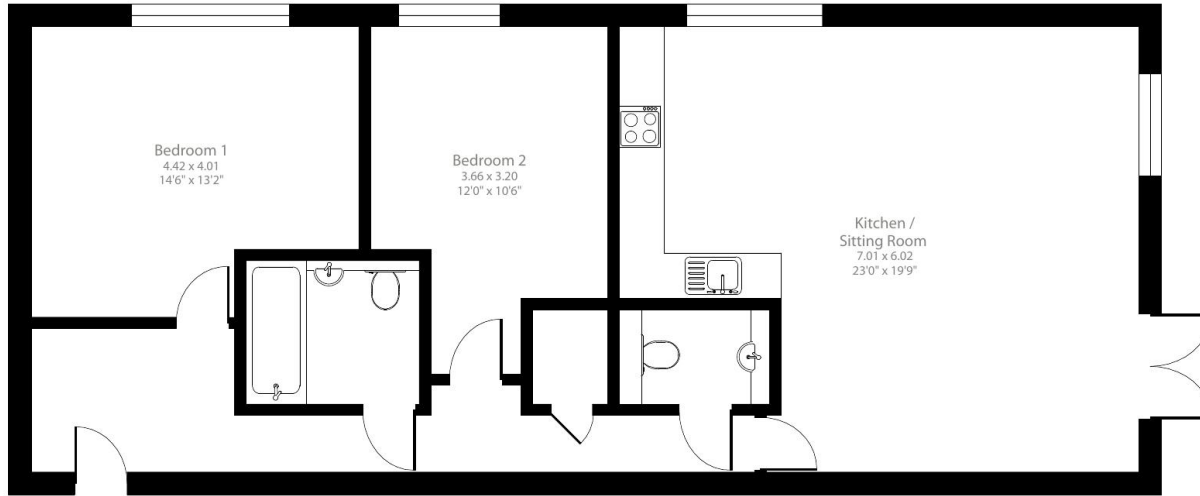




## River Place, Bath, BA2

Approximate Area = 963 sq ft / 89.4 sq m

For identification only - Not to scale



Ground Floor

Floor plan produced in accordance with RICS Property Measurement 2nd Edition, Incorporating International Property Measurement Standards (IPMS2 Residential). © nlcocom 2025. Produced for Carter Jonas. REF: 1281241



### IMPORTANT INFORMATION

These particulars are for general information purposes only and do not represent an offer or contract or part of one. Carter Jonas or anyone in their employment has made every attempt to ensure that the particulars and other information provided are as accurate as possible and they are not intended to amount to advice on which you should rely as being factually accurate. Full information which may be relevant to your decision regarding the property can be found on the property listing on [carterjonas.co.uk](http://carterjonas.co.uk) or a separately available material information sheet, and we would advise you to confirm the details of any material information prior to any offer being submitted. You should not assume that the property has all necessary planning, building regulations or other consents and Carter Jonas has not tested any services, facilities, or equipment. Any measurements and distances given are approximate only. Where Carter Jonas has been provided with a floorplan by a third party, we cannot guarantee that the floorplan has been measured in accordance with IPMS. Purchasers or prospective tenants must satisfy themselves of all of the aforementioned by independent inspection or otherwise. Our images only represent part of the property as it appeared at the time they were taken and do not represent the furnishings included; these are confirmed in a separate inventory. If you require further information, please contact us. \*Administration fees may apply depending on tenancy type. Please contact your local branch for this information.

T: 01225 747250

5-6 Wood Street, Bath, Somerset, BA1 2JQ

E: [bath@carterjonas.co.uk](mailto:bath@carterjonas.co.uk)

A member of



Exclusive UK affiliate of

**CHRISTIE'S**  
INTERNATIONAL REAL ESTATE

Classification L2 - Business Data