



DREWETTS MILL COTTAGE
Corsham

Carter Jonas

DREWETTS MILL COTTAGE, BOX, CORSHAM, WILTSHIRE, SN13 8PS

- Corsham 2 miles
- Bath City Centre 8 miles
- Chippenham 5 miles (London Paddington from 75 minutes)
- M4 (Junction 17) 9 miles
- Bristol Airport 27 miles

Reception hall • Kitchen • Two reception rooms •
Conservatory • Three bedrooms • Bathroom • Adjoining
store room • Parking area • Garaging • Riverside gardens

DESCRIPTION

A truly delightful Grade II Listed former mill cottage built in the early 18th century, constructed of local honey coloured stone elevations with mullion windows under a Cotswold stone roof. The property has been in the same family's ownership for over 100 years. The accommodation is full of character and period features and set over three floors. They include the large open inglenook fireplace, exposed beams, and casement windows with window seats. The original mill leat runs under the house and to the side of the garden. The property needs substantial refurbishment but has huge potential to further extend the size of the property, subject to the necessary consents.

The cottage opens onto a large level south facing lawn garden that leads to an idyllic riverside setting with a wide selection of mature trees. This is a wildlife haven and has the benefit of fishing rights, the Bybrook being known for its trout. A gated driveway leads to a parking area and to a large, detached garage and store room.

Across the river is a large paddock of around 1 acre with a wooden single storey building available by separate negotiation.

A GRADE II LISTED RIVERSIDE MILL COTTAGE IN AN IDYLIC VALLEY SETTING.







SITUATION

This is a remarkable setting, perched on the edge of the Bybrook River. It has two neighbouring properties, the original mill and the mill house, whilst still retaining privacy as they all face away from one another. It is a beautiful and undulating river valley in the south Cotswolds. The valley is well regarded for walking and riding and is teeming with wildlife. It has a very quiet and rural feel yet only 2 miles from Corsham, a pretty market town having all your day-to-day shopping facilities, good pubs and restaurants, whilst being set between the city of Bath and the large town of Chippenham, both having mainline rail access to London Paddington. Bath offers excellent schooling, shopping, leisure, and sporting facilities, as well as being famed for its Georgian architecture.

ADDITIONAL INFORMATION

Tenure: Freehold

Planning: The property is listed Grade II

Services: Mains water and electricity. Oil fired central heating. Private drainage.

EPC band: F

Council Tax: Band F Local Authority: Wiltshire Council.

Viewing: Strictly by appointment with Carter Jonas.

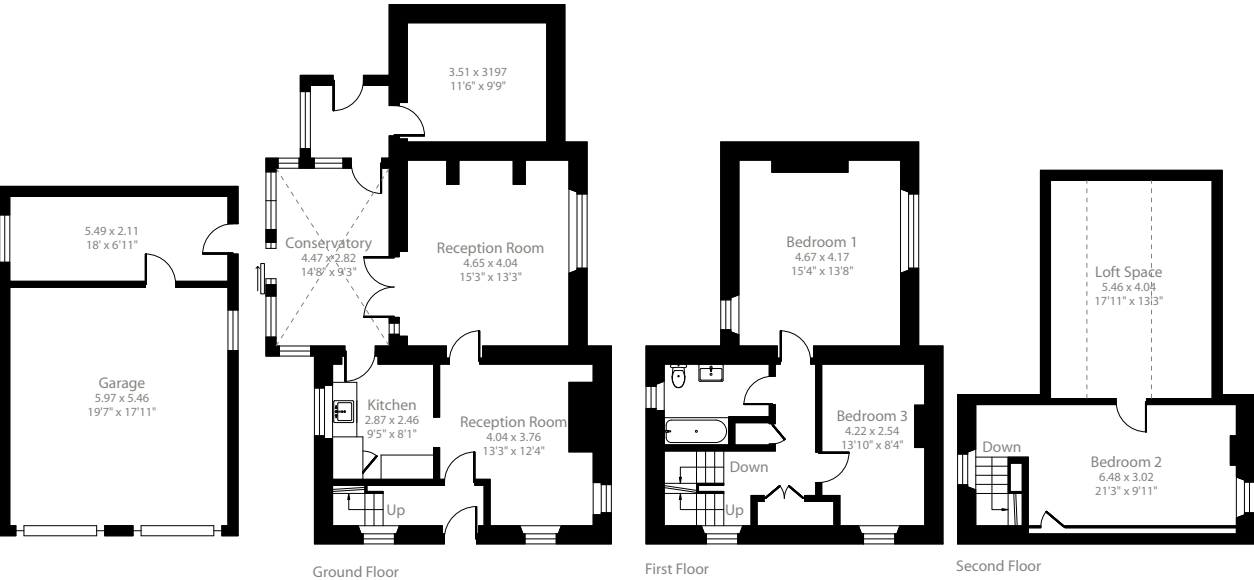






Drewetts Mill Cottage, Box, Corsham, SN13

Approximate Area = 1695 sq ft / 157.4 sq m
Limited Use Area(s) = 144 sq ft / 13.3 sq m
Garage = 489 sq ft / 45.4 sq m
Total = 2328 sq ft / 216.2 sq m
For identification only - Not to scale



Floor plan produced in accordance with RICS Property Measurement Standards incorporating International Property Measurement Standards (IPMS2 Residential). © richcom 2024. Produced for Carter Jonas. REF: 1147296



Bath 01225747250

bath@carterjonas.co.uk
5-6 Wood Street, Bath BA1 2JQ

carterjonas.co.uk
Offices throughout the UK

Exclusive UK affiliate of
CHRISTIE'S
INTERNATIONAL REAL ESTATE

IMPORTANT INFORMATION

These particulars are for general information purposes only and do not represent an offer of contract or part of one. Carter Jonas has made every attempt to ensure that the particulars and other information provided are as accurate as possible and are not intended to amount to advice on which you should rely as being factually accurate. You should not assume that the property has all necessary planning, building regulations or other consents and Carter Jonas have not tested any services, facilities or equipment. Any measurements and distances given are approximate only. Purchasers must satisfy themselves of all of the aforementioned by independent inspection or otherwise. Although we make reasonable efforts to update our information, neither Carter Jonas LLP nor anyone in its employment or acting on its behalf makes any representations warranties or guarantees, whether express or implied, in relation to the property, or that the content in these particulars is accurate, complete or up to date. Our images only represent part of the property as it appeared at the time they were taken. If you require further information please contact us.