



OX-CLOSE FARM, HUTTON-LE-HOLE, YORK, NORTH YORKSHIRE, YO62 6UJ
£2,100 per month

Carter Jonas

OX-CLOSE FARM, HUTTON-LE-HOLE, YORK, NORTH YORKSHIRE, YO62 6UJ

- Available now
- Pets considered
- EPC Rating D
- Council Tax Band F
- Oil fired central heating

THE PROPERTY

Available now, we offer to you Ox-close Farm, a beautifully presented five bedroomed detached character property situated in a rural location just outside the popular village of Hutton-le-Hole, enjoying far-reaching open countryside views.

Ox-close Farm is accessed via a private track and is conveniently located just over 3 miles from Kirkbymoorside, 9 miles from the delightful town of Helmsley, 9 miles from Pickering and 15 miles from the bustling market town of Malton, making this property ideal for family living and someone with commuter needs whilst benefitting from a private yet peaceful, rural location.

The nearby historic market town of Kirkbymoorside provides a selection of amenities only a short drive away including a selection of general convenience stores, Post Office, library and a variety of pubs, restaurants and cafes. Helmsley and Pickering both also offer excellent everyday shopping facilities and are well known for their local shops, restaurants and historic points of interest.

There are also a large variety of highly regarded public and private schools in the local area.

To the ground floor the property briefly comprises a welcoming entrance hall which leads through to a spacious open-plan kitchen dining room area comprising a brand new, fully fitted units with space for a Rangemaster cooker and plumbing in situ for a dishwasher as required, naturally bright living room with a log burning stove, utility room with sink, fitted units and plenty of space for a washing machine and dryer as required, boiler room, downstairs WC with toilet, sink and basin, study room further leading to a separate boot room.

Available now, we offer to you Ox-close Farm, a beautifully presented five bedroomed detached character property situated in a rural location just outside the popular village of Hutton-le-Hole, enjoying open countryside views.



To the first floor, the primary bedroom provides spacious accommodation with countryside views with two further double bedrooms also situated on this floor.

There are two additional bedrooms with a modern family bathroom comprising a shower over the bath, toilet, basin and heated towel rail with a separate walk-in shower room also positioned at the end of the hallway with a large double bedroom adjoining.

Ox-close Farm offers oil fired central heating, ample parking for a number of vehicles, an array of outbuildings which can be utilised for storage purposes with lawned gardens to the front of the property.

Offered unfurnished.

Pets considered.

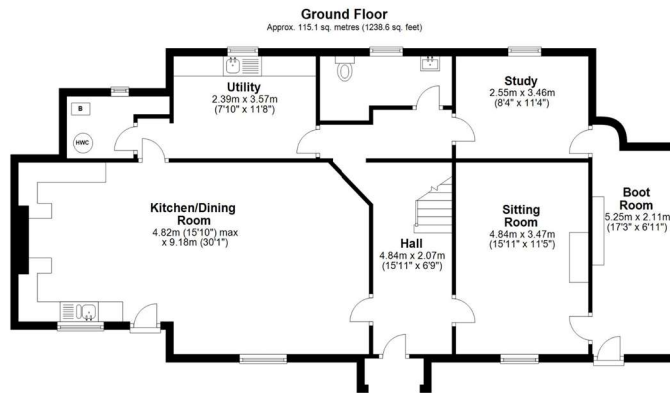
The deposit will be £2,423 (5 week's rent) at a rental value of £2,100 per calendar month.

The holding deposit will be £484 (1 week's rent) at a rental value of £2,100 per calendar month.

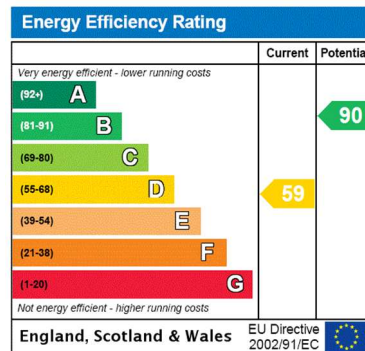
ADDITIONAL INFORMATION

Offers	Available for a minimum term of 12 months, longer terms will be considered
Viewing	Strictly by appointment only
Local Authority	Council Tax Band F





Total area: approx. 218.8 sq. metres (2355.3 sq. feet)
Hutton Oxclose



T: 01423 523423

Regent House, 13-15 Albert Street, Harrogate, HG1 1JX

E: harrogate.rural@carterjonas.co.uk

carterjonas.co.uk
Offices throughout the UK

A member of
 OnTheMarket.com
Classification L2 - Business Data



IMPORTANT INFORMATION

Our property particulars do not represent an offer or contract, or part of one. The information given is without responsibility on the part of the agents, seller(s) or lessor(s) and you should not rely on the information as being factually accurate about the property, its condition or its value. Neither Carter Jonas LLP nor anyone in its employment or acting on its behalf has authority to make any representation or warranty in relation to this property. We have not carried out a detailed survey, nor tested the services, appliances or fittings at the property. The images shown may only represent part of the property and are as they appeared at the time of being photographed. The areas, measurements and distances are approximate only. Where Carter Jonas have been provided with a floorplan by a third party, we can not guarantee that the floorplan has been measured in accordance with IPMS. Any reference to alterations or use does not mean that any necessary planning permission, building regulation or other consent has been obtained. The VAT position relating to the property may change without notice. Administration fees may apply depending on tenancy type. Please contact your local branch for this information.