



**GROSVENOR ROAD, PIMLICO, SW1V**  
**£1,850,000**

**Carter Jonas**



## GROSVENOR ROAD, PIMLICO, SW1V

New to the market. A lateral space of 1743 sq ft situated on the first floor (with stair access from the ground floor) of this riverside residential building with 24 hour portage and communal gardens.

This flat offers the buyer the rare opportunity to renovate and refurbish entirely to create a wonderful home or London base. It benefits from unobstructed views of the Thames from the principal rooms, a large private terrace and plentiful natural light.

Crown Reach is a 1980s modern development designed by Nicholas Lacey & Associates positioned just west of Vauxhall Bridge with the amenities of Pimlico and Victoria close by.

Reception with fully fitted open-plan kitchen, 3 double bedrooms, en-suite bathroom, en-suite shower room, en-suite cloakroom, private terrace. 1 allocated parking underground parking space. 24 hour portage and communal gardens.

Westminster City Council

Council tax band: H

Leasehold - 146 years remaining

Service charge - 5/10/23 to 4/4/24 £8983.01 to include the reserve fund. New service charge tbc

For the latest information on broadband and mobile coverage, please visit Ofcom <https://checker.ofcom.org.uk/en-gb/broadband-coverage> for the most up-to-date details.

For eligibility for resident parking permits, please refer to the Westminster Council website <https://www.westminster.gov.uk/parking> website for further details.

**ASKING PRICE:** £1,850,000

**TENURE** Leasehold

**LOCAL AUTHORITY** Westminster City Council

**EPC BAND** B



Classification L2 - Business Data





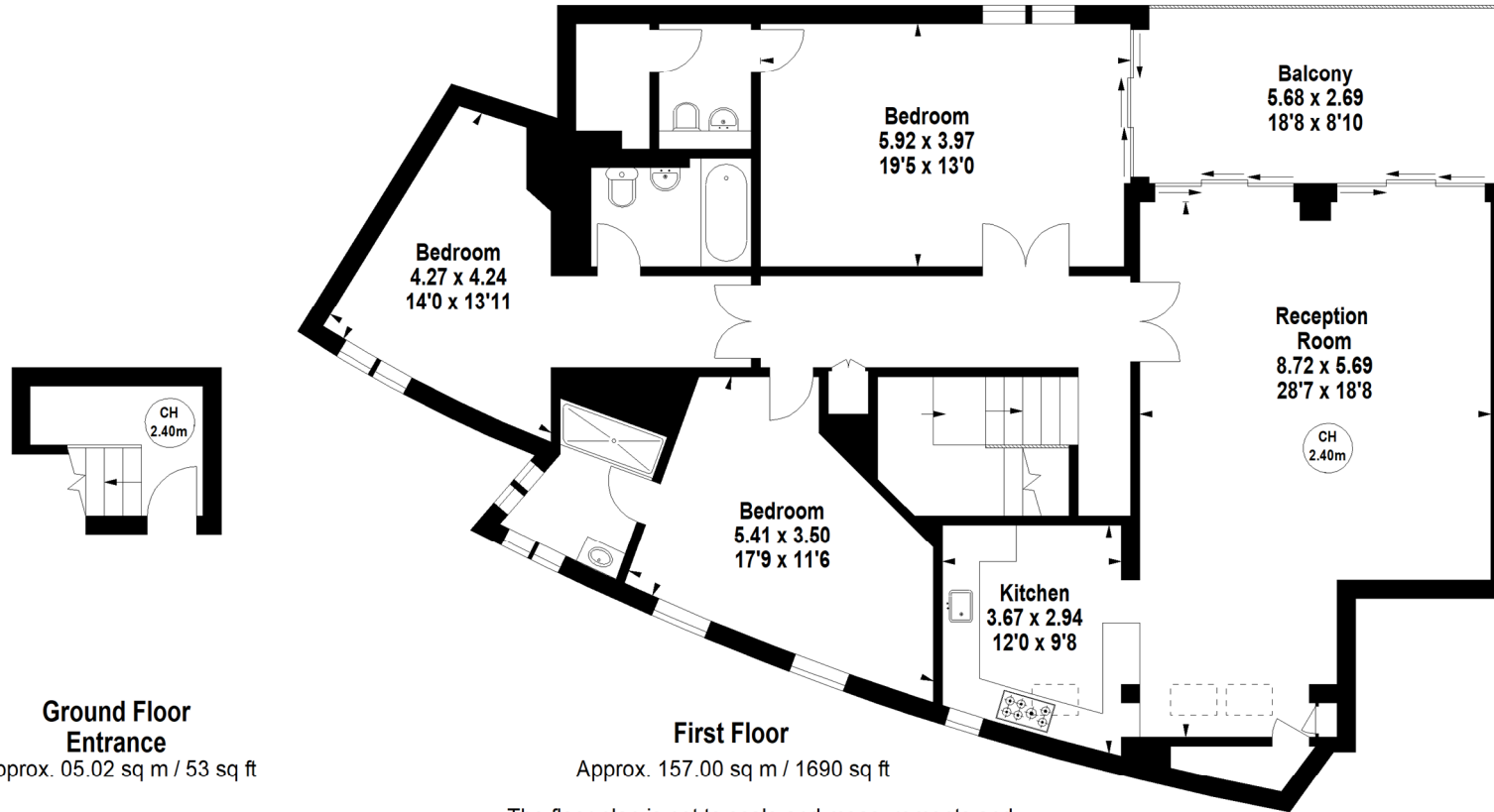
Classification L2 - Business Data



## Crown Reach, SW1V

Approximate Area = 161.92 sq m / 1743 sq ft

Key :  
CH - Ceiling Height



The floor plan is not to scale and measurements and areas shown are approximate and therefore should be used for illustrative purposes only. The plan has been prepared in accordance with the RICS code of Measuring Practice and whilst we have confidence in the information produced, it must not be relied on. If there is any aspect of particular importance, you should carry out or commission your own inspection of the property.

Energy Efficiency Rating		
	Current	Potential
Very energy efficient - lower running costs		
(92+) <b>A</b>		
(81-91) <b>B</b>	81	83
(69-80) <b>C</b>		
(55-68) <b>D</b>		
(39-54) <b>E</b>		
(21-38) <b>F</b>		
(1-20) <b>G</b>		
Not energy efficient - higher running costs		
England, Scotland & Wales EU Directive 2002/91/EC		

Kensington & Chelsea 020 7584 7020

chelsea@carterjonas.co.uk  
25-27 Harrington Road, London, SW7 3EU

**carterjonas.co.uk**  
Offices throughout the UK

Exclusive UK affiliate of

**CHRISTIE'S**  
INTERNATIONAL REAL ESTATE

### IMPORTANT INFORMATION

These particulars are for general information purposes only and do not represent an offer or contract or part of one. Carter Jonas or anyone in their employment has made every attempt to ensure that the particulars and other information provided are as accurate as possible and they are not intended to amount to advice on which you should rely as being factually accurate. Full information which may be relevant to your decision regarding the property can be found on the property listing on carterjonas.co.uk or, (including off market properties) on the brochure or a separately available material information sheet. We would advise you to confirm the details of any material information prior to any offer being submitted. You should not assume that the property has all necessary planning, building regulations or other consents and Carter Jonas has not tested any services, facilities or equipment. Any measurements and distances given are approximate only. Where Carter Jonas has been provided with a floorplan by a third party, we cannot guarantee that the floorplan has been measured in accordance with IPMS. Purchasers must satisfy themselves of all of the aforementioned by independent inspection or otherwise. Our images only represent part of the property as it appeared at the time they were taken and do not represent the furnishings included; these are confirmed in a separate inventory. If you require further information, please contact us.

Classification L2 - Business Data