



HONEYSTREET,  
PEWSEY

Carter Jonas



# 1-2 THE LAURELS, HONEYSTREET, PEWSEY, WILTSHIRE, SN9 5PX

A STYLISH PERIOD HOUSE IN AN IDYLIC CANAL SIDE LOCATION AND BENEFITING FROM RURAL SOUTHERLY VIEWS.

## KEY FEATURES

- 2455 square feet
- Rural location
- Detached, period property
- Four bedrooms
- Two bathrooms
- Garage and driveway parking
- Garage and outbuildings
- Gardens
- Walking distance to pub and Café



## SITUATION

1-2 The Laurels enjoys a canal side location in the popular hamlet of Honeystreet, a community of predominately period houses built largely in the 19th Century around the waterway. It is an idyllic situation at the heart of the rural Pewsey Vale, which is designated as an Area of Outstanding Natural Beauty. The property enjoys open views to the front and faces the Marlborough Downs and the famous White Horse to the rear. Local amenities include the Barge Inn and the Honeystreet Café both popular with cyclists and walkers. Pewsey is a substantial and historic village dating from Saxon times, with a thriving community, and boasts the oldest carnival in Wiltshire. The village provides a comprehensive range of shops and amenities including well-regarded private and state schools, a sports centre with swimming pool, various pubs and restaurants. Pewsey has a main line rail station with services to London Paddington. The market town of Marlborough is situated c9 miles to the north-east. The Kennet and Avon canal flows to the rear and there is a myriad of footpaths and bridleways giving access to lovely walking, riding and cycling opportunities. The M4 Motorway (J15) is to the North and A303 (M3) to the South.

## DESCRIPTION

Built in the mid-19th Century, 1-2 The Laurels is a charming and stylish period house of brick and sarsen stone elevations under a slate tiled roof. Extending to just under 2,500 sq.ft, well-proportioned rooms give excellent flow of accommodation with the inviting and spacious entrance hall setting the tone. The house enjoys an elegant feel, tastefully decorated throughout which enhances the natural light.

The main sitting room is the heart of the house and is a lovely, elegant room centred around the open fireplace. Reception space is not in short supply and on the other side of the entrance hall is an additional sitting room, from where you can also access the rear garden.

There is a large custom-built kitchen with a wide range of fitted units, granite worksurfaces and complete with oil fired 4 oven Aga. The tastefully decorated dining room, with hardwood flooring, offers a great space to entertain or for family meals.

The Victorian style conservatory, located off the dining room, offers a particularly useful space and doubles up as the ideal dog/boot room. The ground floor accommodation is completed by the downstairs cloakroom and separate utility room.

The staircase leads up to a generous landing on the first floor. The principal bedroom is located at the western end of the house and benefits from a good-sized ensuite bathroom. There is also a door leading through to the dressing room, which could be used bedroom should there be the need. There are three further bedrooms which are all served by the well-appointed family bathroom.

## OUTSIDE

The house is approached off a narrow single-track lane, through a gateway to a gravelled parking area for several vehicles. Outbuildings include the timber garage, adjoining stabling/storage and the substantial timber outbuilding located in the far corner of the garden. This room could have several uses, such as a home office, games room or gym.

A key feature of this property is the beautifully maintained and well stocked garden, which surrounds the house and enjoys great privacy. The owners have taken great care in creating and maintaining this exceptional garden, which is arranged over three landscaped levels, and there are a wonderful array of plants, shrubs and trees to enjoy. There is a large, paved terrace, with a pond, which offers the ideal place to sit and relax in the warmer months. On the top tier is the impressive vegetable garden with raised beds and the substantial greenhouse.

## SERVICES & MATERIAL INFORMATION

- Freehold
- Mains water, mains drainage. oil fired central heating.
- Council tax band: G - <https://www.wiltshire.gov.uk/article/7069/Council-tax-bands-and-charges>
- Energy efficiency rating: E
- Broadband and mobile coverage. Please refer to <https://checker.ofcom.org.uk/>

**GUIDE PRICE** £1,000,000 subject to contract

**VIEWING ARRANGEMENTS:** By appointment with the Marlborough Office



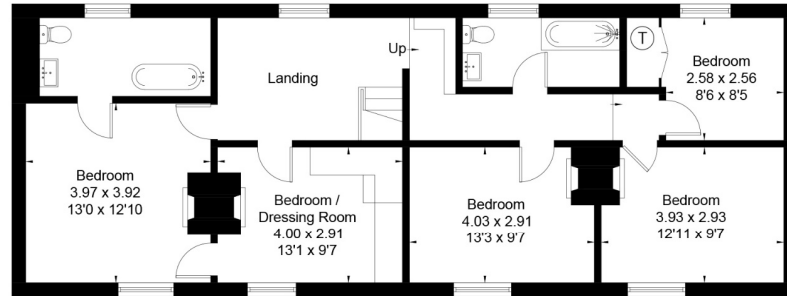




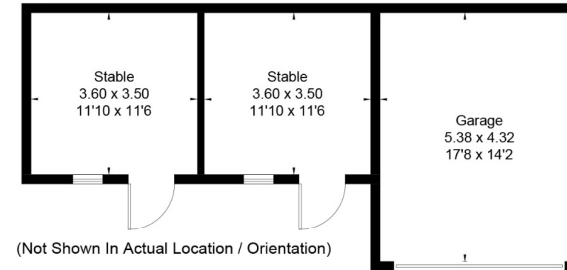
Classification L2 - Business Data



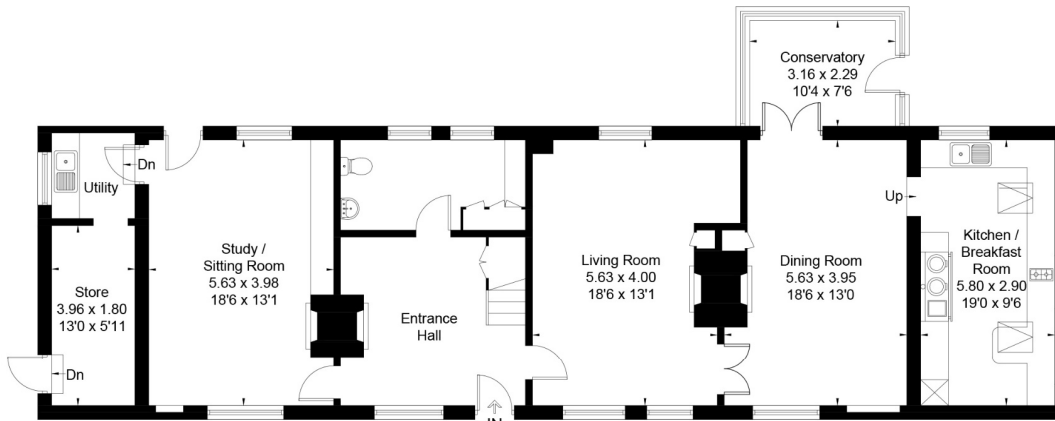
1-2 The Laurels, Honeystreet Pewsey SN9  
 Approximate Area = 2455 sq ft / 228.1 sq m  
 Garage = 250 sq ft / 23.2 sq m  
 Outbuildings = 271 sq ft / 25.2 sq m (Excluding Shed)  
 Total Area = 2976 sq ft / 276.5 sq m



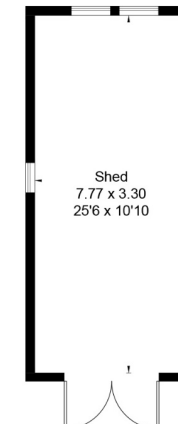
First Floor



(Not Shown In Actual Location / Orientation)



Ground Floor



(Not Shown In Actual Location / Orientation)



This floor plan has been drawn in accordance with RICS Property Measurement 2nd edition.  
 All measurements, including the floor area, are approximate and for illustrative purposes only. @fourwalls-group.com #69112

**Marlborough 01672 514 916**  
 93 High Street, Marlborough, SN8 1HD

**carterjonas.co.uk**  
 Offices throughout the UK

#### IMPORTANT INFORMATION

These particulars are for general information purposes only and do not represent an offer of contract or part of one. Carter Jonas has made every attempt to ensure that the particulars and other information provided are as accurate as possible and are not intended to amount to advice on which you should rely as being factually accurate. You should not assume that the property has all necessary planning, building regulations or other consents and Carter Jonas have not tested any services, facilities or equipment. Any measurements and distances given are approximate only. Purchasers must satisfy themselves of all of the aforementioned by independent inspection or otherwise. Although we make reasonable efforts to update our information, neither Carter Jonas LLP nor anyone in its employment or acting on its behalf makes any representations warranties or guarantees, whether express or implied, in relation to the property, or that the content in these particulars is accurate, complete or up to date. Our images only represent part of the property as it appeared at the time they were taken. If you require further information please contact us.

Classification L2 - Business Data