



**FOUNTAIN HOUSE, PARK STREET, W1K**  
£2,307 per week\*

**Carter Jonas**



---

# FLAT 56, FOUNTAIN HOUSE, PARK STREET, MAYFAIR, W1K 7HG

A two-bedroom, dual aspect apartment of approximately 1,135 square feet

- Furnished
- 2 Bedrooms
- 1 En suite shower room
- 1 Bathroom
- Open plan kitchen / reception room
- Study /bedroom 3
- Lift
- 24 Hour concierge
- Residence parking
- Furniture package available under separate negotiation

## THE PROPERTY

With a magnificent views along Mount Street, this bright new apartment is situated on the fifth floor of a grand 24-hour portered building with lift ideally located in central Mayfair.

The apartment has been fully refurbished and reconfigured to create an elegant Mayfair home with wood flooring and generous storage throughout.

## LOCATION

Mayfair is London's most fashionable destination. With London's finest buildings, largest concentration of luxury hotels, best restaurants, bars, shopping, open spaces and hidden treasures all nestled together in a beautiful village setting.

Nearest Tube: Marble Arch / Hyde Park Corner

NHA

The deposit will be £13,842 at a rental value of £2,307 (asking price).

Holding deposit = 1 weeks rent of £2,307

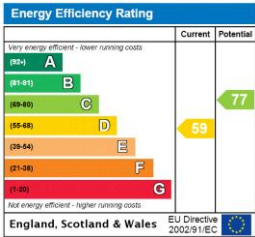
Deposit is 6 weeks rent (£2,307 pw = £13,842 deposit).





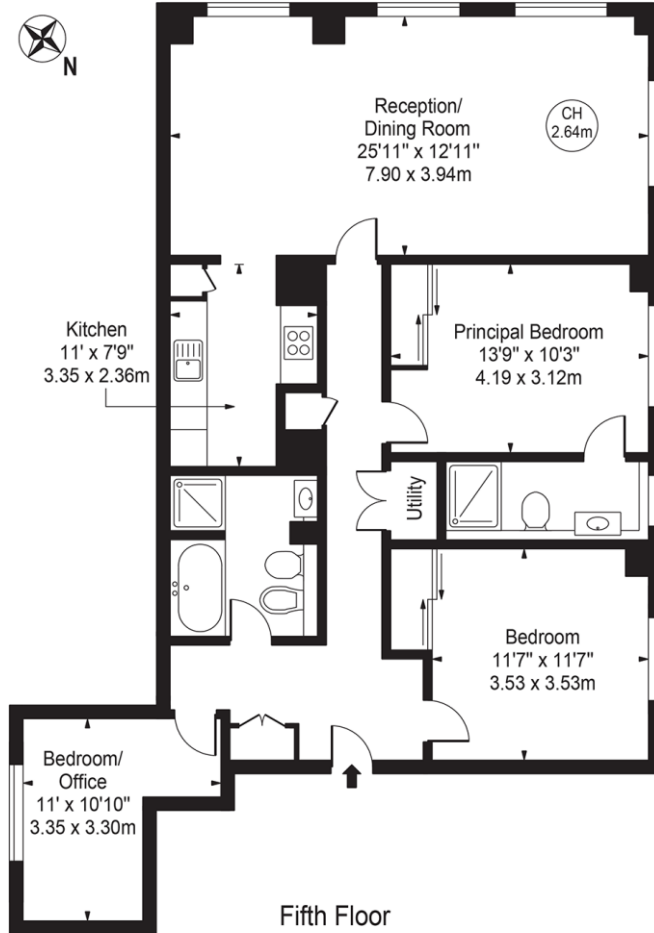
ADDITIONAL INFORMATION

|                 |                                                                              |
|-----------------|------------------------------------------------------------------------------|
| Offers          | Available for a minimum term of 12 months<br>longer terms will be considered |
| Viewing         | Strictly by appointment                                                      |
| Local Authority | Westminster County Council - Council Tax Band H                              |



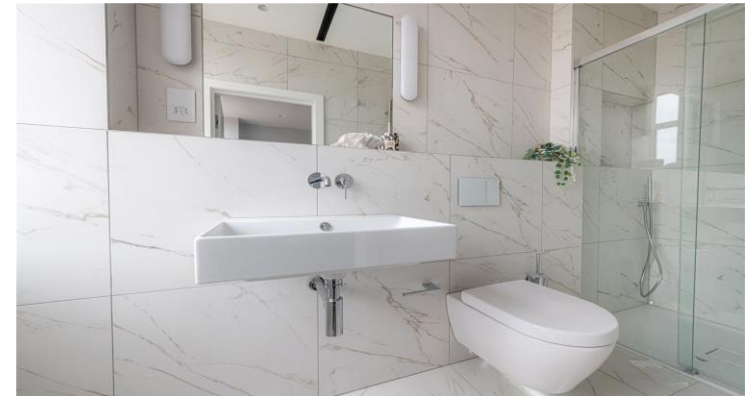
## Fountain House

Approx. Gross Internal Area 1134 Sq Ft - 105.35 Sq M



For Illustration Purposes Only - Not To Scale

This floor plan should be used as a general outline for guidance only and does not constitute in whole or in part an offer or contract. Any intending purchaser or lessee should satisfy themselves by inspection, searches, enquiries and full survey as to the correctness of each statement. Any areas, measurements or distances quoted are approximate and should not be used to value a property or be the basis of any sale or let. Copyright Morriarti Photography & Design LTD



T: 020 7493 0676

18 Davies Street, Mayfair, London, W1K 3DS

E: mayfair@carterjonas.co.uk



Exclusive UK affiliate of

**CHRISTIE'S**  
INTERNATIONAL REAL ESTATE

Classification L2 - Business Data

### IMPORTANT INFORMATION

Our property particulars do not represent an offer or contract, or part of one. The information given is without responsibility on the part of the agents, seller(s) or lessor(s) and you should not rely on the information as being factually accurate about the property, its condition, or its value. Neither Carter Jonas LLP nor anyone in its employment or acting on its behalf has authority to make any representation or warranty in relation to this property. We have not carried out a detailed survey, nor tested the services, appliances, or fittings at the property. The images shown may only represent part of the property and are as they appeared at the time of being photographed. The areas, measurements and distances are approximate only. Where Carter Jonas have been provided with a floorplan by a third party, we cannot guarantee that the floorplan has been measured in accordance with IPMS. Any reference to alterations or use does not mean that any necessary planning permission, building regulation or other consent has been obtained. The VAT position relating to the property may change without notice. Administration fees may apply depending on tenancy type. Please contact your local branch for this information.