



**THE NOVA BUILDING, 79 BUCKINGHAM PALACE ROAD, SW1W**  
£2,095 per week\*

**Carter Jonas**



---

## THE NOVA BUILDING, 79 BUCKINGHAM PALACE ROAD, VICTORIA, SW1W

- Furnished
- 2 Bedrooms
- 1 Reception room
- 1 Kitchen
- 1 En suite bathroom
- 1 Family bathroom
- 2 Balconies

This contemporary apartment is located on the second floor of the modern Nova development with lift and 24-hr concierge. The apartment has been finished and furnished to the highest standard with air conditioning and wooden flooring throughout.

The residents of Nova have access to a resident's cinema that can be rented privately, a lounge, gym and private roof top garden on the ninth floor with views overlooking central London. The Nova development is ideally located within half a mile of Buckingham Palace, St James's Park and all the amenities of Westminster, Victoria and Belgravia. The Nova Building and Cardinal Place at Victoria are home to a host of restaurants, bars and cafes. Nova Food brings a total of 17 new restaurants to the area making it the new go-to destination for London's discerning diners.

Westminster lies on the north bank of the River Thames. It has its own University and shopping street alongside a substantial residential element which is home to many Members of Parliament, political journalists and students. Its core encompasses the famous Historic landmarks of the Houses of Parliament and Westminster Abbey and has been the seat of the Government of England for almost a thousand years. A more recent landmark and tourist attraction is the London Eye from where fantastic views of the City can be seen.

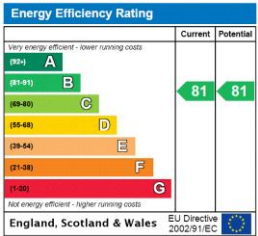
A two-bedroom apartment of approximately 1,042 square feet





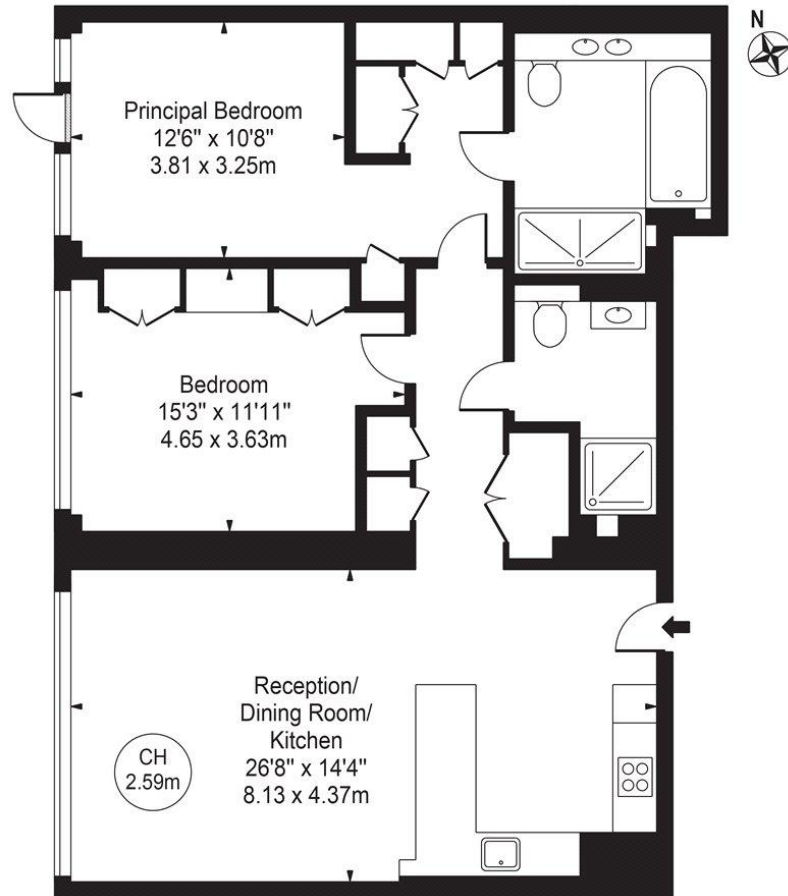
ADDITIONAL INFORMATION

|                 |  |
|-----------------|--|
| Offers          | Available for a minimum term of 12 months<br>longer terms will be considered |
| Viewing         | Strictly by appointment  |
| Local Authority | Westminster County Council - Council Tax Band B                              |



# The Nova Building

Approx. Gross Internal Area 1058 Sq Ft - 98.29 Sq M



## Second Floor

For Illustration Purposes Only - Not To Scale

This floor plan should be used as a general outline for guidance only and does not constitute in whole or in part an offer or contract. Any intending purchaser or lessee should satisfy themselves by inspection, searches, enquiries and full survey as to the correctness of each statement. Any areas, measurements or distances quoted are approximate and should not be used to value a property or be the basis of any sale or let. Copyright Morriarti Photography & Design LTD



T: 020 7493 0676

18 Davies Street, Mayfair, London, W1K 3DS

E: mayfair@carterjonas.co.uk



Exclusive UK affiliate of

**CHRISTIE'S**  
INTERNATIONAL REAL ESTATE

Classification L2 - Business Data

## IMPORTANT INFORMATION

Our property particulars do not represent an offer or contract, or part of one. The information given is without responsibility on the part of the agents, seller(s) or lessor(s) and you should not rely on the information as being factually accurate about the property, its condition, or its value. Neither Carter Jonas LLP nor anyone in its employment or acting on its behalf has authority to make any representation or warranty in relation to this property. We have not carried out a detailed survey, nor tested the services, appliances, or fittings at the property. The images shown may only represent part of the property and are as they appeared at the time of being photographed. The areas, measurements and distances are approximate only. Where Carter Jonas have been provided with a floorplan by a third party, we cannot guarantee that the floorplan has been measured in accordance with IPMS. Any reference to alterations or use does not mean that any necessary planning permission, building regulation or other consent has been obtained. The VAT position relating to the property may change without notice. Administration fees may apply depending on tenancy type. Please contact your local branch for this information.