



**MUSEUM STREET, BLOOMSBURY, WC1A**  
£1,300 per week\*

**Carter Jonas**



---

## MUSEUM STREET, BLOOMSBURY, LONDON, WC1A 1LY

A three-bedroom apartment of approximately 1,520 square feet

- New Refurbishment
- 3 bedrooms
- Reception / Dining room
- Separate Kitchen
- En suite bathroom
- Family bathroom
- Study
- Unfurnished
- Furniture available at an additional cost

A newly refurbished triplex apartment situated over the first, second and third floors of this well-presented period building located close to the British Museum and shopping and transport links. This well-presented apartment has wood flooring throughout the reception areas and benefits from a separate study. Offered to rent on an unfurnished basis, furniture can be made available at a separate additional cost.

Bloomsbury is quietly nestled to the east of the famous shopping facilities of Oxford Street and is notable for its concentration of academic establishments and formal garden squares. It is home to the British Museum, Great Ormond Street Children's Hospital, Georgian town houses, publishers and delightful cafes and bookshops.

Nearest Tube: Holborn / Tottenham Court Road.

AST

The deposit will be £7,800 at a rental value of £1,300 (asking price)

Holding deposit = 1 weeks rent of £1,300

Rent is not payable weekly

Deposit is 6 weeks rent (£1,300 pw = £7,800 deposit)

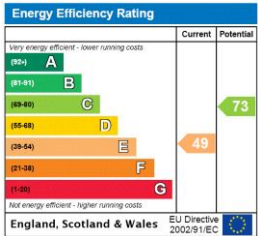
Mains Gas





# ADDITIONAL INFORMATION

Offers	Available for a minimum term of 12 months longer terms will be considered
Viewing	Strictly by appointment
Local Authority	Camden Council - Council Tax Band G
Material Information	Gas central heating Standard Copper Broadband



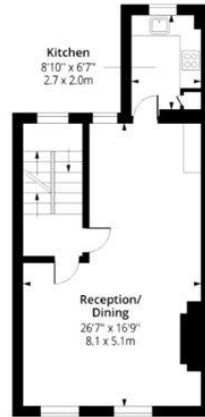
# Museum Street, WC1

Approx. Gross Internal Area 1764 Sq Ft - 163.88 Sq M



**Ground Floor Entrance**

Floor Area 81 Sq Ft - 7.52 Sq M



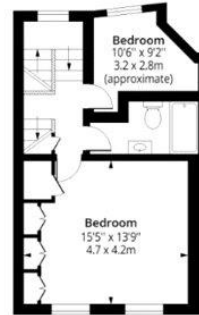
**First Floor**

Floor Area 511 Sq Ft - 47.47 Sq M



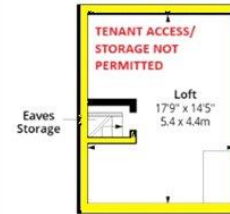
**Second Floor**

Floor Area 511 Sq Ft - 47.47 Sq M



**Third Floor**

Floor Area 417 Sq Ft - 38.74 Sq M



**Fourth Floor**

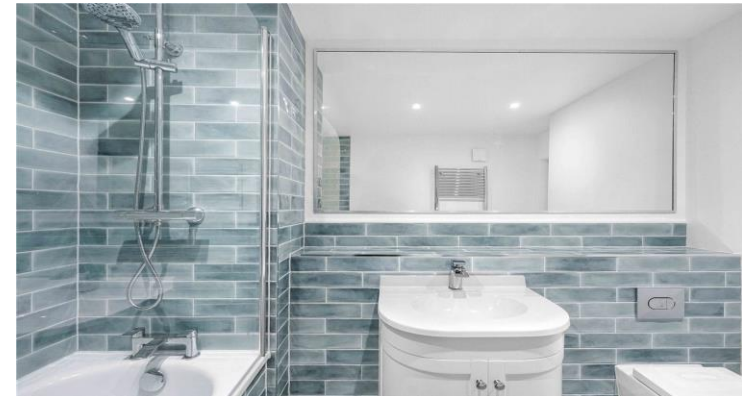
Floor Area 244 Sq Ft - 22.67 Sq M



Measured according to RICS IPMS2. Floor plan is for illustrative purposes only and is not to scale. Every attempt has been made to ensure the accuracy of the floor plan shown, however all measurements, fixtures, fittings and data shown are an approximate interpretation for illustrative purposes only. 1 sq m = 10.76 sq feet.

lpaplus.com

Date: 16/1/2025



**T: 020 7493 0676**

18 Davies Street, Mayfair, London, W1K 3DS

E: [mayfair@carterjonas.co.uk](mailto:mayfair@carterjonas.co.uk)

A member of



*Exclusive UK affiliate of*

**CHRISTIE'S**  
INTERNATIONAL REAL ESTATE

Classification L2 - Business Data

## IMPORTANT INFORMATION

These particulars are for general information purposes only and do not represent an offer or contract or part of one. Carter Jonas or anyone in their employment has made every attempt to ensure that the particulars and other information provided are as accurate as possible and they are not intended to amount to advice on which you should rely as being factually accurate. Full information which may be relevant to your decision regarding the property can be found on the property listing on [carterjonas.co.uk](http://carterjonas.co.uk) or a separately available material information sheet, and we would advise you to confirm the details of any material information prior to any offer being submitted. You should not assume that the property has all necessary planning, building regulations or other consents and Carter Jonas has not tested any services, facilities, or equipment. Any measurements and distances given are approximate only. Where Carter Jonas has been provided with a floorplan by a third party, we cannot guarantee that the floorplan has been measured in accordance with IPMS. Purchasers or prospective tenants must satisfy themselves of all of the aforementioned by independent inspection or otherwise. Our images only represent part of the property as it appeared at the time they were taken and do not represent the furnishings included; these are confirmed in a separate inventory. If you require further information, please contact us. \*Administration fees may apply depending on tenancy type. Please contact your local branch for this information.