



SEYMOUR PLACE, LONDON, W1H
£925 per week*

Carter Jonas

SEYMOUR PLACE, LONDON, W1H 5BA

- Two Bedrooms
- Two bathrooms
- 1 Reception Room
- Modern finish
- Excellent storage

LOCATION

Seymour Place is situated close to Marylebone High Street and its lively section of stores, restaurants, and cafes. The open areas and leisure amenities of Hyde Park lie to the south. Edgware Road (Circle/District/Hammersmith & City), Marylebone (Bakerloo), Marble Arch (Central), Baker Street (Jubilee/Bakerloo), and Paddington are just a some of the nearby convenient transportation hubs that are close to the property (Elizabeth & mainline Station).

THE PROPERTY

This third-floor apartment is finished to a fantastic standard and features a bright open plan reception room with hard wood floors, and modern high spec kitchen.

Available for long term rental on an unfurnished basis, or furnished (at separate cost)

The property is professionally managed by The Portman Estate.

Minimum term 12 months

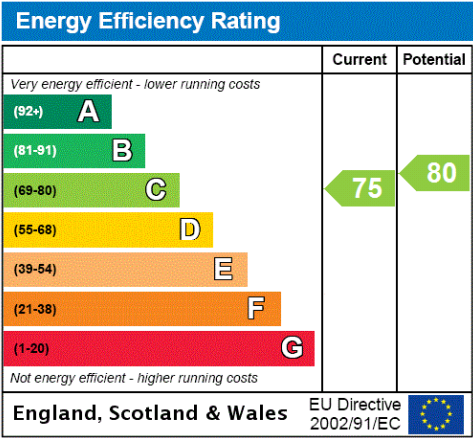
Council Tax Band E

The Portman Estate's 110 acres of land within Marylebone, London W1, has a rich heritage dating back to the 16th century and is the setting for continual investment in premium residential properties, shops and independent businesses. The Portman Estate includes key places of architectural and historical interest along with a vibrant blend of shops, including Portman Village, restaurants, wine-bars, hotels and garden squares - a perfect mix of leisure opportunities for residents in the heart of London's West End.

This well presented two-bedroom apartment is located on the trendy Seymour Place, moments from Oxford Street and Hyde Park.

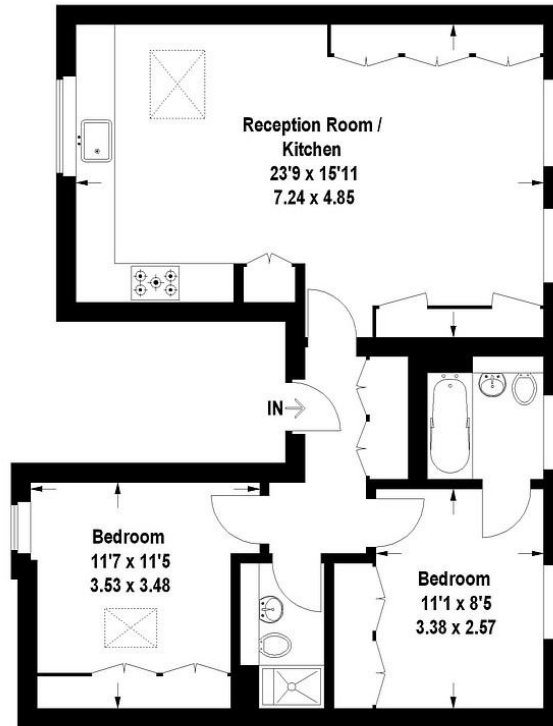


ADDITIONAL INFORMATION	
Offers	Available for a minimum term of 12 months longer terms will be considered
Viewing	Strictly by appointment
Local Authority	Westminster City Council - Council Tax Band E



Seymour Place, W1

Approximate Gross Internal Area
69 sq m / 743 sq ft



3rd Floor

This plan is for layout guidance only. Not drawn to scale unless stated. Windows and door openings are approximate. Whilst every care is taken in the preparation of this plan, please check all dimensions, shapes and compass bearings before making any decisions reliant upon them. (ID 90741)

T: 020 7486 8866

37 New Cavendish Street, London, W1G 9TL

E: marylebone@carterjonas.co.uk

A member of



Exclusive UK affiliate of

CHRISTIE'S
INTERNATIONAL REAL ESTATE

Classification L2 - Business Data



IMPORTANT INFORMATION

These particulars are for general information purposes only and do not represent an offer of contract or part of one. Carter Jonas has made every attempt to ensure that the particulars and other information provided are as accurate as possible and are not intended to amount to advice on which you should rely as being factually accurate. You should not assume that the property has all necessary planning, building regulations or other consents and Carter Jonas have not tested any services, facilities or equipment. Any measurements and distances given are approximate only. Where Carter Jonas have been provided with a floorplan by a third party, we can not guarantee that the floorplan has been measured in accordance with IPMS. Purchasers or prospective tenants must satisfy themselves of all of the aforementioned by independent inspection or otherwise. Although we make reasonable efforts to update our information, neither Carter Jonas nor anyone in its employment or acting on its behalf makes any representations warranties or guarantees, whether express or implied, in relation to the property, or that the content in these particulars is accurate, complete or up to date. Our images only represent part of the property as it appeared at the time they were taken and do not represent the furnishings included, these are confirmed in a separate inventory. If you require further information please contact us.

*Administration fees may apply depending on tenancy type. Please contact your local branch for this information.