



CHILTERN STREET, MARYLEBONE, W1U
£1,900 per week*

Carter Jonas

23 CHILTERN PLACE, CHILTERN STREET, MARYLEBONE, LONDON, W1U 4EJ

- One bedroom apartment
- Fifth floor
- Onsite Gym
- 24-hour Porter
- Air conditioning
- Part furnished

THE PROPERTY

Comprising of an open plan kitchen with marble island and Gaggenau appliances, bright reception room with fitted media console, large double bedroom with views over Chiltern Street and plush bathroom with free standing tub and separate shower.

The property is offered part furnished and benefits from air conditioning and Juliet balcony.

Holding deposit is 1 week's rent = £1,900 (at asking price)

Security deposit is 6 week's rent = £11,400 (at asking price £1,900pw)

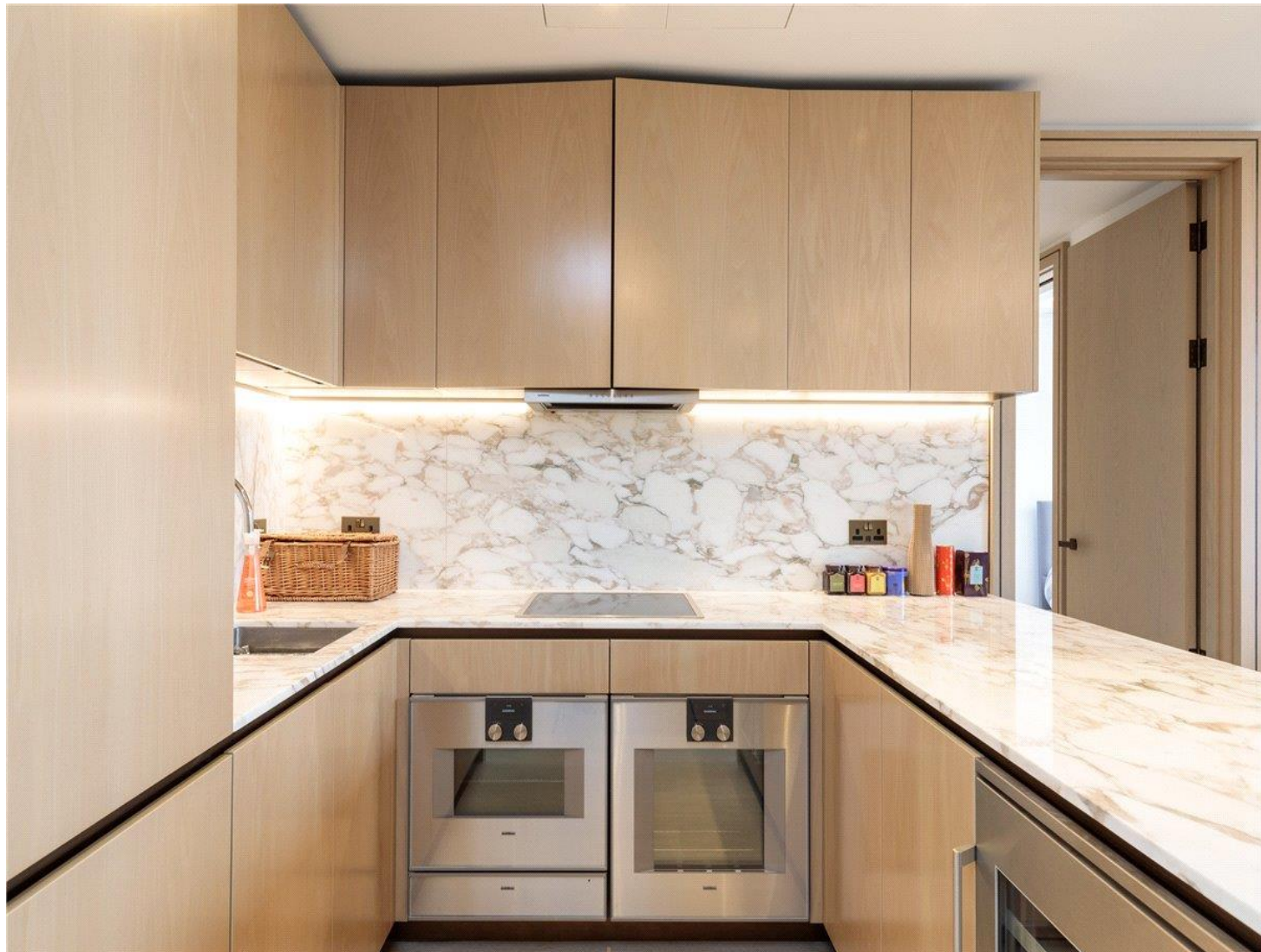
Minimum Term 12 months

Council Tax Band F

For the latest information on broadband and mobile coverage, please visit [/checker.ofcom](https://checker.ofcom.gov.uk/) for the most up-to-date details.

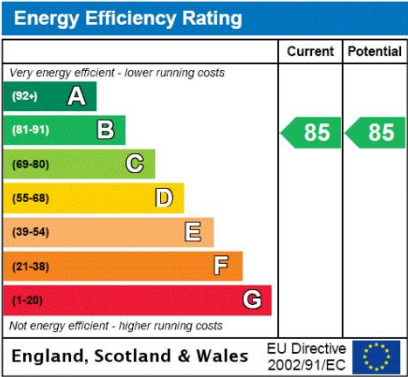
Chiltern Place is a sophisticated oasis, proudly standing between the cosmopolitan buzz of Marylebone village and the West End. Nestled between two conservation areas, the building is designed to be contemporary and yet complement the existing architecture. It's everything an exclusive Central London property should be. The development features 24-hour porter and private gym.

This immaculate one-bedroom apartment is located on the 5th floor of the prestigious Chiltern Place development.



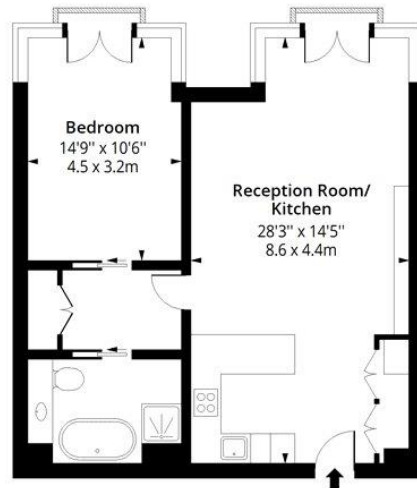
ADDITIONAL INFORMATION

Offers	Available for a minimum term of 12 months longer terms will be considered
Viewing	Strictly by appointment
Local Authority	Westminster City Council - Council Tax Band F



Chiltern Street, W1U

Approx. Gross Internal Area 672 Sq Ft - 62.40 Sq M



Fifth Floor

Floor Area 672 Sq Ft - 62.40 Sq M

Floor plan is for illustrative purposes only and is not to scale. Every attempt has been made to ensure the accuracy of the floor plan shown, however all measurements, fixtures, fittings and data shown are an approximate interpretation for illustrative purposes only.

lpaplus.com



T: 020 7486 8866

37 New Cavendish Street, London, W1G 9TL

E: marylebone.lettings@carterjonas.co.uk

A member of



Exclusive UK affiliate of

CHRISTIE'S
INTERNATIONAL REAL ESTATE

Classification L2 - Business Data

IMPORTANT INFORMATION

These particulars are for general information purposes only and do not represent an offer or contract or part of one. Carter Jonas or anyone in their employment has made every attempt to ensure that the particulars and other information provided are as accurate as possible and they are not intended to amount to advice on which you should rely as being factually accurate. Full information which may be relevant to your decision regarding the property can be found on the property listing on carterjonas.co.uk or a separately available material information sheet, and we would advise you to confirm the details of any material information prior to any offer being submitted. You should not assume that the property has all necessary planning, building regulations or other consents and Carter Jonas has not tested any services, facilities, or equipment. Any measurements and distances given are approximate only. Where Carter Jonas has been provided with a floorplan by a third party, we cannot guarantee that the floorplan has been measured in accordance with IPMS. Purchasers or prospective tenants must satisfy themselves of all of the aforementioned by independent inspection or otherwise. Our images only represent part of the property as it appeared at the time they were taken and do not represent the furnishings included; these are confirmed in a separate inventory. If you require further information, please contact us. *Administration fees may apply depending on tenancy type. Please contact your local branch for this information.