



**RODMARTON STREET, MARYLEBONE, W1U**  
£2,250 per week\*

**Carter Jonas**

## **RODMARTON STREET, MARYLEBONE, LONDON, W1U 8BL**

- 1 Reception Room
- 3 Bedrooms
- 3 Bathrooms
- Patio
- Roof Terrace
- Portman Estate
- Unfurnished (Rental furniture available at additional cost)

### **THE PROPERTY**

Finished to an immaculate standard with wood flooring throughout. Comprises a huge open plan living space with high spec fully fitted kitchen, utility room with WC, private patio, three double bedrooms all with en-suite bathrooms, and roof terrace.

The property is professionally managed by The Portman Estate.

Available for long term rental on an unfurnished basis, or furnished (at separate cost)

Holding deposit is 1 week's rent = £2,250 (at asking price)

Security deposit is 6 week's rent = £13,500 (at asking price £2,250pw)

Minimum Term 12 months

Council Tax Band H

For the latest information on broadband and mobile coverage, please visit [checker.ofcom](https://www.ofcom.gov.uk/consult/condocs/broadband/broadband-checker/) for the most up-to-date details.

Rodmarton Street is a residential street located in Marylebone, London, renowned for its attractive period architecture. Situated in close proximity to Regent's Park and within walking distance of the bustling Oxford Street, it offers a peaceful retreat within a central and well-connected location. The area is well-served by nearby cafes, shops, and restaurants, offering convenience for daily needs. The street's charm and tranquil atmosphere contribute to its appeal as a desirable residential location in the heart of the city.

## **A remarkable three-bedroom home situated in a boutique development in the heart of Marylebone.**

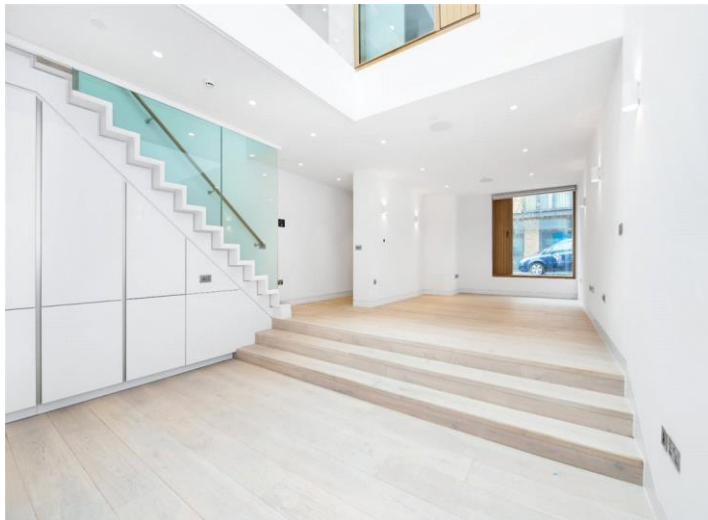
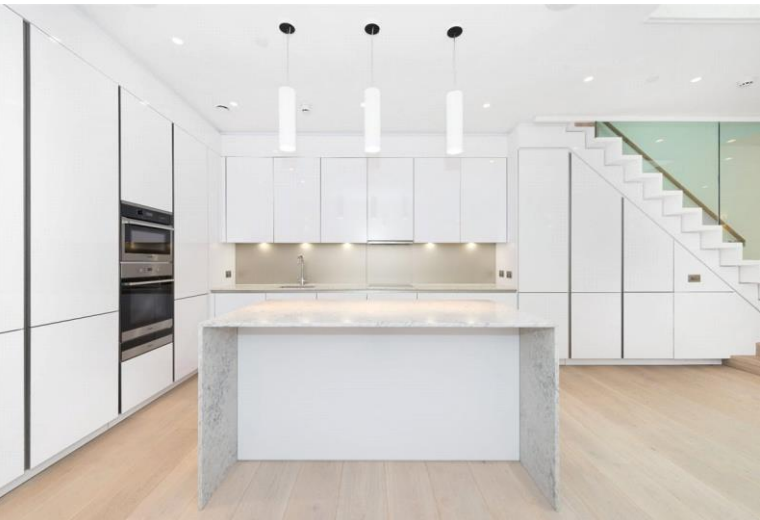
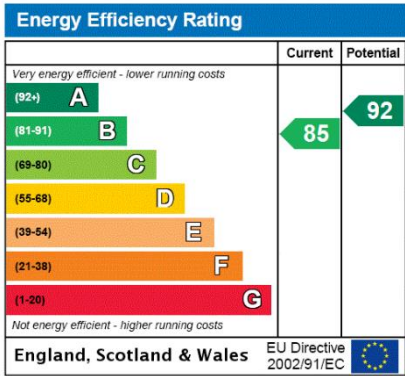




The Portman Estate's 110 acres of land within Marylebone, London W1, has a rich heritage dating back to the 16th century and is the setting for continual investment in premium residential properties, shops and independent businesses. The Portman Estate includes key places of architectural and historical interest along with a vibrant blend of shops, including Portman Village, restaurants, wine-bars, hotels and garden squares - a perfect mix of leisure opportunities for residents in the heart of London's West End.

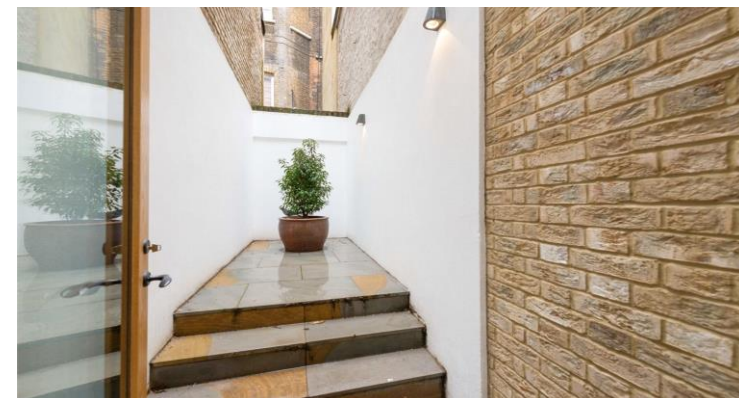
## ADDITIONAL INFORMATION

Offers	Available for a minimum term of 12 months longer terms will be considered
Viewing	Strictly by appointment
Local Authority	Westminster City Council - Council Tax Band H



## RODMARTON STREET, W1U

Approx. gross internal area  
1704 Sq Ft. / 158.3 Sq M.  
Representation of current layout.  
Not to scale.



**T: 020 7486 8866**

37 New Cavendish Street, London, W1G 9TL

E: marylebone.lettings@carterjonas.co.uk

A member of



*Exclusive UK affiliate of*

**CHRISTIE'S**  
INTERNATIONAL REAL ESTATE

Classification L2 - Business Data

### IMPORTANT INFORMATION

These particulars are for general information purposes only and do not represent an offer or contract or part of one. Carter Jonas or anyone in their employment has made every attempt to ensure that the particulars and other information provided are as accurate as possible and they are not intended to amount to advice on which you should rely as being factually accurate. Full information which may be relevant to your decision regarding the property can be found on the property listing on [carterjonas.co.uk](http://carterjonas.co.uk) or a separately available material information sheet, and we would advise you to confirm the details of any material information prior to any offer being submitted. You should not assume that the property has all necessary planning, building regulations or other consents and Carter Jonas has not tested any services, facilities, or equipment. Any measurements and distances given are approximate only. Where Carter Jonas has been provided with a floorplan by a third party, we cannot guarantee that the floorplan has been measured in accordance with IPMS. Purchasers or prospective tenants must satisfy themselves of all of the aforementioned by independent inspection or otherwise. Our images only represent part of the property as it appeared at the time they were taken and do not represent the furnishings included; these are confirmed in a separate inventory. If you require further information, please contact us. \*Administration fees may apply depending on tenancy type. Please contact your local branch for this information.