



NEW QUEBEC STREET, LONDON, W1H
£895 per week*

Carter Jonas

FLAT 3, NEW QUEBEC STREET, LONDON, W1H 7SB

- 2 Bedrooms
- 2 Bathrooms
- Reception Room
- Kitchen
- Top Floor

THE PROPERTY

Bright top floor apartment located amongst the shops and restaurants of the fashionable New Quebec Street, moments from Oxford Street, Bond Street Station and Hyde Park. Comprises a good size reception room with wood floors, and separate kitchen.

The property is professionally managed by The Portman Estate.

Holding deposit is 1 week's rent = £895 (at asking price)

Security deposit is 5 week's rent = £4,475 (at asking price £895pw)

Minimum Term 12 months

Council Tax Band E

For the latest information on broadband and mobile coverage, please visit [/checker.ofcom](http://checker.ofcom) for the most up-to-date details.

New Quebec Street is a charming enclave nestled in the heart of London. Located near the prestigious Marylebone area, this hidden gem offers a mix of upscale boutiques, gourmet restaurants, and elegant residential properties. Its quaint atmosphere, tree-lined streets, and proximity to Oxford Street make it a sought-after destination for both locals and visitors alike. Marble Arch station is approximately 0.3 miles and Bond Street Station approximately 0.5 miles.

The Portman Estate's 110 acres of land within Marylebone, London W1, has a rich heritage dating back to the 16th century and is the setting for continual investment in premium residential properties, shops and independent businesses. The Portman Estate includes key places of architectural and historical interest along with a vibrant blend of shops, including Portman Village, restaurants, wine-bars, hotels and garden squares - a perfect mix of leisure opportunities for

Bright top floor apartment featuring 2-bedroom, 2- bathroom flat on New quebec street is available to rent.



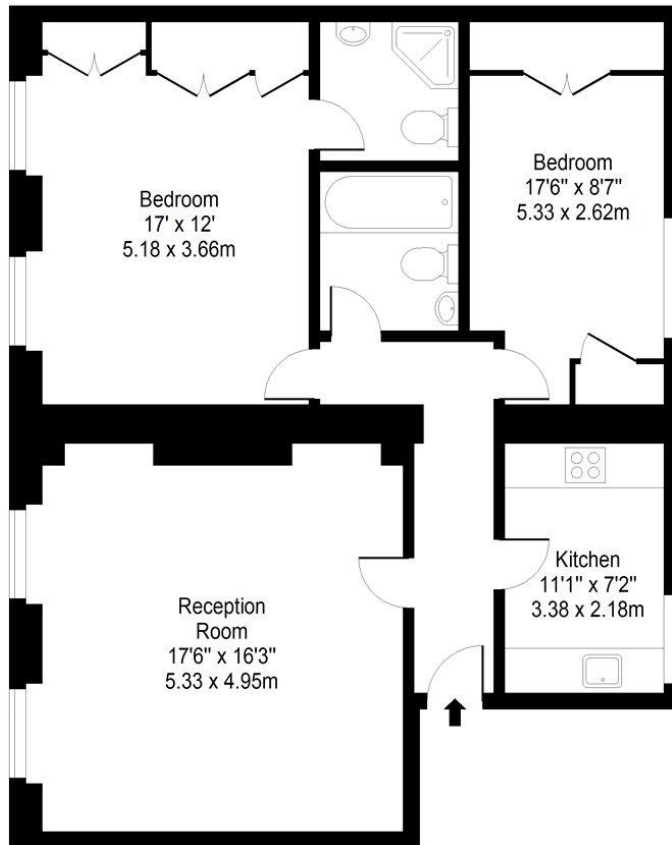
residents in the heart of London`s West End.

ADDITIONAL INFORMATION

Offers	Available for a minimum term of 12 months longer terms will be considered
Viewing	Strictly by appointment
Local Authority	Westminster City Council - Council Tax Band E



NEW QUEBEC STREET



Third Floor

Approx. Gross Internal Area 967 Sq Ft - 89.83 Sq M
For Illustrative Purposes Only - Not To Scale

T: 020 7486 8866

37 New Cavendish Street, London, W1G 9TL

E: marylebone.lettings@carterjonas.co.uk

A member of



Exclusive UK affiliate of

CHRISTIE'S
INTERNATIONAL REAL ESTATE

Classification L2 - Business Data



Energy Efficiency Rating		
	Current	Potential
Very energy efficient - lower running costs		
(92+) A		
(81-91) B		
(69-80) C		
(55-68) D		
(39-54) E		
(21-38) F		
(1-20) G		
Not energy efficient - higher running costs		
England, Scotland & Wales	EU Directive 2002/91/EC	

IMPORTANT INFORMATION

These particulars are for general information purposes only and do not represent an offer or contract or part of one. Carter Jonas or anyone in their employment has made every attempt to ensure that the particulars and other information provided are as accurate as possible and they are not intended to amount to advice on which you should rely as being factually accurate. Full information which may be relevant to your decision regarding the property can be found on the property listing on carterjonas.co.uk or a separately available material information sheet, and we would advise you to confirm the details of any material information prior to any offer being submitted. You should not assume that the property has all necessary planning, building regulations or other consents and Carter Jonas has not tested any services, facilities, or equipment. Any measurements and distances given are approximate only. Where Carter Jonas has been provided with a floorplan by a third party, we cannot guarantee that the floorplan has been measured in accordance with IPMS. Purchasers or prospective tenants must satisfy themselves of all of the aforementioned by independent inspection or otherwise. Our images only represent part of the property as it appeared at the time they were taken and do not represent the furnishings included; these are confirmed in a separate inventory. If you require further information, please contact us. *Administration fees may apply depending on tenancy type. Please contact your local branch for this information.