



**HALLAM STREET, MARYLEBONE, W1W**  
£990 per week\*

**Carter Jonas**



## FLAT 47, HALLAM STREET, MARYLEBONE, LONDON, W1W 5HE

- Two modern double Bedrooms
- Two Bathrooms with showers
- Open plan Kitchen/ Reception room
- Furnished
- Located on Hallam Street

### THE PROPERTY

A bright and modern two-bedroom apartment set on the third floor of a sought after building on Hallam Street. It is very well presented throughout and lovely and bright. The apartment features an open plan kitchen/ reception room with guest cloakroom, two double bedrooms both with ensuite shower rooms.

Hallam Street is a picturesque thoroughfare located in the heart of London's West End, distinguished by its harmonious blend of residential and commercial properties. This tree-lined avenue is marked by exquisite Georgian architecture and a lively ambiance, facilitating convenient access to local cafes and retail establishments. Approximately 0.3 miles to the northwest, one can find the notable Great Portland Street tube station, which provides service on the Circle, Hammersmith & City, and Metropolitan lines.

Available for long term rental on a furnished basis.

Holding deposit is 1 week's rent = £990 (at asking price)

Security deposit is 5 week's rent = £4,950 (at asking price £990pw)

Minimum Term 12 months

Council Tax Band G

For the latest information on broadband and mobile coverage, please visit [checker.ofcom](http://checker.ofcom) for the most up-to-date details.

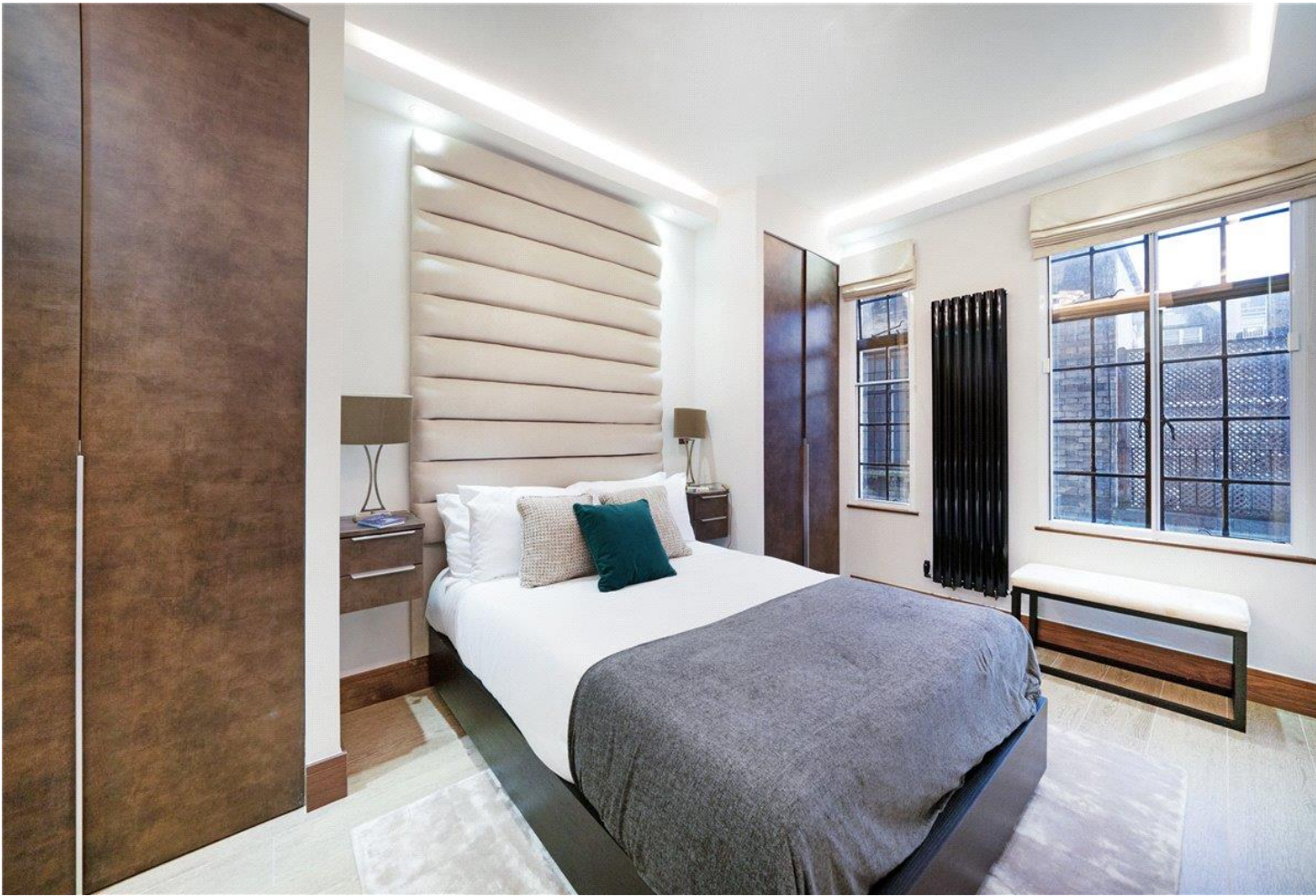
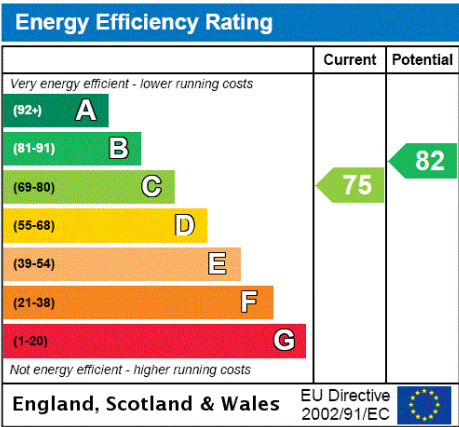
## A beautiful two-bedroom apartment set on the third floor of a sought after building on Hallam street now available to rent.





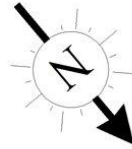
ADDITIONAL INFORMATION

Offers	Available for a minimum term of 12 months longer terms will be considered
Viewing	Strictly by appointment
Local Authority	Westminster City Council - Council Tax Band G





HALLAM STREET



Third Floor

Approx. Gross Internal Area 633 Sq Ft - 58.81 Sq M  
For Illustrative Purposes Only - Not To Scale



#### IMPORTANT INFORMATION

These particulars are for general information purposes only and do not represent an offer or contract or part of one. Carter Jonas or anyone in their employment has made every attempt to ensure that the particulars and other information provided are as accurate as possible and they are not intended to amount to advice on which you should rely as being factually accurate. Full information which may be relevant to your decision regarding the property can be found on the property listing on [carterjonas.co.uk](http://carterjonas.co.uk) or a separately available material information sheet, and we would advise you to confirm the details of any material information prior to any offer being submitted. You should not assume that the property has all necessary planning, building regulations or other consents and Carter Jonas has not tested any services, facilities, or equipment. Any measurements and distances given are approximate only. Where Carter Jonas has been provided with a floorplan by a third party, we cannot guarantee that the floorplan has been measured in accordance with IPMS. Purchasers or prospective tenants must satisfy themselves of all of the aforementioned by independent inspection or otherwise. Our images only represent part of the property as it appeared at the time they were taken and do not represent the furnishings included; these are confirmed in a separate inventory. If you require further information, please contact us. \*Administration fees may apply depending on tenancy type. Please contact your local branch for this information.

T: 020 7486 8866

37 New Cavendish Street, London, W1G 9TL

E: [marylebone.lettings@carterjonas.co.uk](mailto:marylebone.lettings@carterjonas.co.uk)

A member of



Exclusive UK affiliate of

**CHRISTIE'S**  
INTERNATIONAL REAL ESTATE