



ROBERT ADAM STREET, MARYLEBONE, W1U
£625 per week*

Carter Jonas

FLAT A, ROBERT ADAM STREET, MARYLEBONE, LONDON, W1U 3HN

- Professionally managed by The Portman Estate.
- Complimentary membership to Portman Concierge.
- One Reception Room
- Fully Fitted Kitchen
- Two Bedrooms
- One Bathroom with a bathtub/shower
- Patio
- Unfurnished (or furnished via separate negotiation)

THE PROPERTY

The property benefits from a small private patio and comprises open plan reception room/ kitchen with wood floors, double bedroom, study/single bedroom and bathroom.

The property is professionally managed by The Portman Estate.

Available for long term rental on an unfurnished basis, or furnished (at separate cost).

Complimentary membership to Portman Concierge.

Robert Adam Street is a charming thoroughfare located in the heart of London. Named after the renowned Scottish architect, it exudes elegance and architectural beauty. Lined with Georgian-style houses, the street offers a glimpse into London's historic past. With its picturesque setting and proximity to notable landmarks, it remains a sought-after destination for residents and visitors alike. Transport links are excellent from nearby with Bond Street station (approximately 0.4 miles) and Baker Street station (approximately 0.5 miles).

The Portman Estate's 110 acres of land within Marylebone, London W1, has a rich heritage dating back to the 16th century and is the setting for continual investment in premium residential properties, shops and independent businesses. The Portman Estate includes key places of architectural and historical interest along with a vibrant blend of shops, including Portman Village, restaurants, wine-bars, hotels and garden squares - a perfect mix of leisure opportunities for residents in the heart of London's West End.

Charming apartment with private patio in an enviable location close to Marylebone High Street and Oxford Street.



Holding deposit is 1 week's rent = £625 at asking price.

Security deposit is 5 weeks rent = £3,125 (at asking price of £625pw)

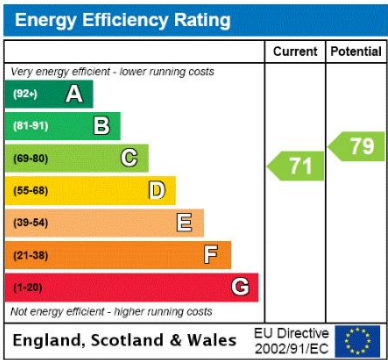
Minimum term 12 months

Council Tax Band E

For the latest information on broadband and mobile coverage, please visit /checker.ofcom for the most up-to-date details.

ADDITIONAL INFORMATION

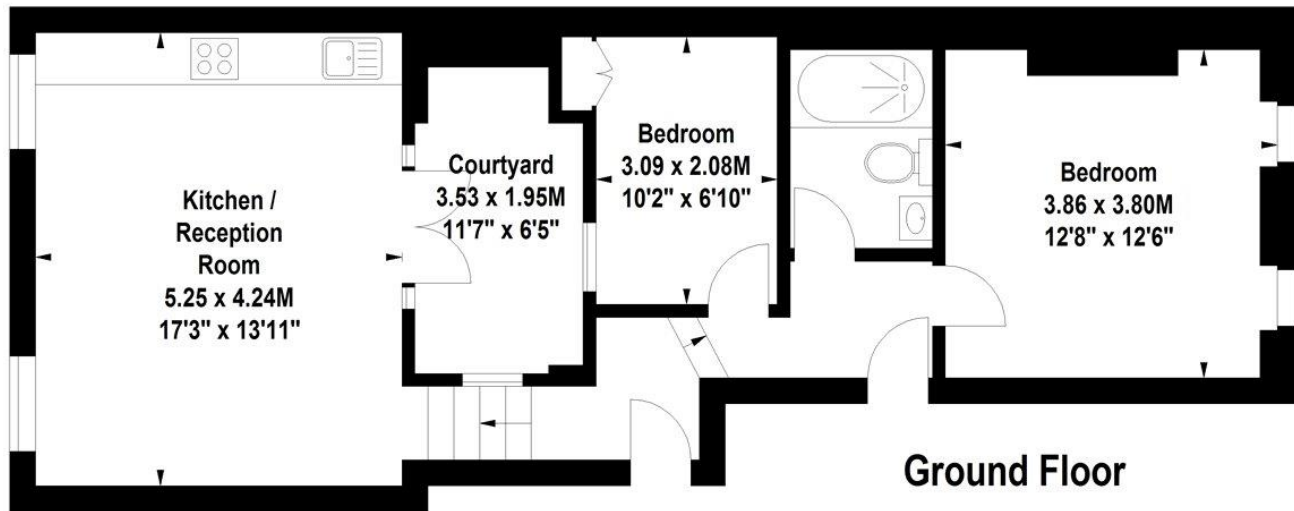
| | |
|-----------------|---|
| Offers | Available for a minimum term of 12 months longer terms will be considered |
| Viewing | Strictly by appointment |
| Local Authority | Westminster City Council - Council Tax Band E |





Robert Adam Street, W1

Approximate Gross Internal Area 55.55 sq m (598 sq ft)



hydepark@cluttons.com

020 7262 2226

cluttons.com

Floor Plan produced for Cluttons by Mays Floorplans © . Tel 020 3397 4594

Illustration for identification purposes only, not to scale

All measurements are maximum, and include wardrobes and window bays where applicable



T: 020 7486 8866

37 New Cavendish Street, London, W1G 9TL

E: marylebone.lettings@carterjonas.co.uk

A member of



Exclusive UK affiliate of

CHRISTIE'S
INTERNATIONAL REAL ESTATE

IMPORTANT INFORMATION

These particulars are for general information purposes only and do not represent an offer or contract or part of one. Carter Jonas or anyone in their employment has made every attempt to ensure that the particulars and other information provided are as accurate as possible and they are not intended to amount to advice on which you should rely as being factually accurate. Full information which may be relevant to your decision regarding the property can be found on the property listing on carterjonas.co.uk or a separately available material information sheet, and we would advise you to confirm the details of any material information prior to any offer being submitted. You should not assume that the property has all necessary planning, building regulations or other consents and Carter Jonas has not tested any services, facilities, or equipment. Any measurements and distances given are approximate only. Where Carter Jonas has been provided with a floorplan by a third party, we cannot guarantee that the floorplan has been measured in accordance with IPMS. Purchasers or prospective tenants must satisfy themselves of all of the aforementioned by independent inspection or otherwise. Our images only represent part of the property as it appeared at the time they were taken and do not represent the furnishings included; these are confirmed in a separate inventory. If you require further information, please contact us. *Administration fees may apply depending on tenancy type. Please contact your local branch for this information.