



2 SPRING GARDENS
Guide Price £895,000

Carter Jonas

2 SPRING GARDENS NEWBURY RG20 0PR

- Newbury town and mainline station 2 miles
- M4 (J13) 8 miles
- A34 less than 1 mile
- London Paddington from Newbury in less than 1 hour

Porch · entrance hall · cloakroom · sitting room · dining room · study · large kitchen/family room with doors to the garden · landing · main bedroom with ensuite · guest bedroom with ensuite · 3 further bedrooms · all bedrooms have built in wardrobes · family bathroom · single garage and workshop · private drive · south facing rear garden · within easy access to the town centre, the A34 and M4 motorway · Energy Rating tbc

SITUATION

Spring Gardens is a cul-de-sac of family homes situated just south of Newbury in an area known as Wash Water. From the property it is only a short drive into the town centre as well as to the A34 providing a fast link to the M4 motorway. Being on the edge of the town it is close to attractive open countryside together within easy access to a range of highly respected primary and secondary, as well as independent schools. Newbury town offers a good selection of shops and supermarkets. There are plenty of restaurants, cafés, public houses and leisure facilities, including Newbury Racecourse, the attractive Kennet & Avon canal, Vue cinema, Corn Exchange and Watermill theatres. There are arts and sports centres, health and golf clubs, a bowls club, museums and an outdoor market on Thursdays and Saturdays. There are well regarded schools for all age groups and Newbury College, with its campus to the south of the town. There is excellent access to the major road routes of A34 and M4 and the mainline rail station to London (Paddington).

DESCRIPTION

2 Spring Gardens is a well designed family house providing very good accommodation arranged over 2 floors.

SITUATED ON THE SOUTH SIDE OF NEWBURY, A SPACIOUS 5 BEDROOM DETACHED FAMILY HOUSE WITH A LANDSCAPED SOUTH FACING GARDEN AND DETACHED DOUBLE GARAGE WITH EXCELLENT ACCESS TO THE A34 AND M4 MOTORWAY.



On entering the property there is a spacious hallway from which radiate the sitting room, which has south facing French windows to the garden and gas fire, the dining room with glazed double doors to the hall and a very useful good sized study with 2 windows to the front. Across the rear of the house and on the south side is the large kitchen/family room which offers excellent family living providing a kitchen area with a range of units with granite tops and built in appliances including fridge, freezer, microwave and dishwasher and space for range cooker with extractor hood and light above, together with space for a table as well as a sunny seating area with doors out to the garden.

Upstairs there is a central main landing with access to loft space and built in airing cupboard, off which is the master bedroom with ensuite shower room, guest bedroom with ensuite, 3 further bedrooms and the family bathroom with both bath and shower. There are built in wardrobes in all 5 bedrooms, UPVC double-glazed windows and external doors throughout.

OUTSIDE

To the front of the property is a drive providing private off road parking together with access to the detached brick built single garage and workshop. There is an open plan area of garden to either side and gated access to the side providing a pedestrian way to the rear. The rear garden has been attractively landscaped on 2 main levels but with an additional raised decked seating area, with the upper level being accessed from the rear of the property, from both the kitchen and sitting room, providing a private and sunny terrace. From this area there are steps leading to the raised area of decking, with further steps leading down to the lower level where there is an area of lawn which is well screened by mature trees and shrubs. It is fully enclosed and south facing.

ADDITIONAL INFORMATION

Tenure: Freehold

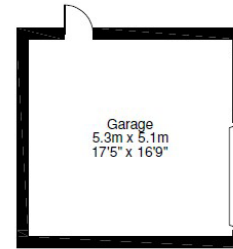
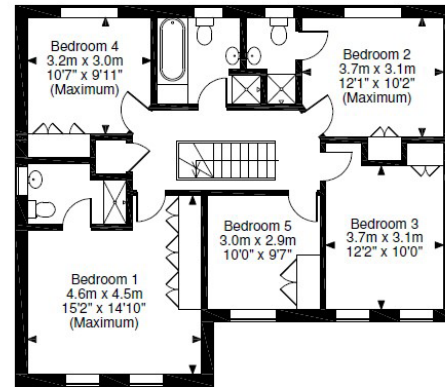
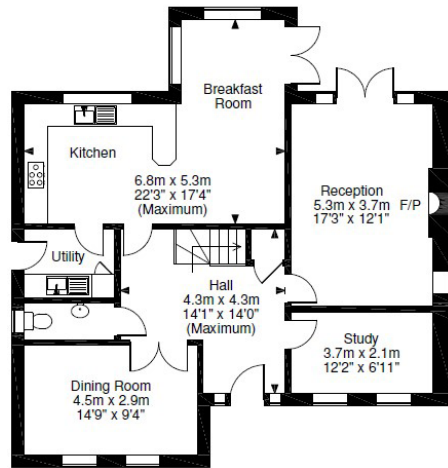
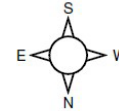
Services: All mains services including gas fired central heating

Local Authority: West Berkshire Council – 01635 551111

Council Tax: Band C



Spring Gardens, Newbury
Approximate Gross Internal Area
Main House = 1,965 sq ft / 183 sq m
Garage = 291 sq ft / 27 sq m
Total = 2,256 sq ft / 210 sq m



FOR ILLUSTRATIVE PURPOSES ONLY - NOT TO SCALE

The position & size of doors, windows, appliances and other features are approximate only.
 © ehouse. Unauthorised reproduction prohibited. Drawing ref. dig/8138862/DMS



Newbury 01635 263000

newbury@carterjonas.co.uk

51 Northbrook Street, Newbury, RG14 1DT

carterjonas.co.uk

Offices throughout the UK

Exclusive UK affiliate of

CHRISTIE'S
 INTERNATIONAL REAL ESTATE

IMPORTANT INFORMATION

These particulars are for general information purposes only and do not represent an offer of contract or part of one. Carter Jonas has made every attempt to ensure that the particulars and other information provided are as accurate as possible and are not intended to amount to advice on which you should rely as being factually accurate. You should not assume that the property has all necessary planning, building regulations or other consents and Carter Jonas have not tested any services, facilities or equipment. Any measurements and distances given are approximate only. Purchasers must satisfy themselves of all of the aforementioned by independent inspection or otherwise. Although we make reasonable efforts to update our information, neither Carter Jonas LLP nor anyone in its employment or acting on its behalf makes any representations warranties or guarantees, whether express or implied, in relation to the property, or that the content in these particulars is accurate, complete or up to date. Our images only represent part of the property as it appeared at the time they were taken. If you require further information please contact us.