



**MEADOW VIEW**  
Pitsford, Northamptonshire

**Carter Jonas**



# MEADOW VIEW GRANGE LANE PITSFORD NORTHAMPTONSHIRE NN6 9AL

Reception Hall · Cloakroom/WC · Sitting Room · Dining Room · Kitchen/Breakfast Room · Three Bedrooms  
Shower Room · Single Garage · Large Gardens  
EPC rating D

## DESCRIPTION

Meadow View stands in a peaceful village location and offers tastefully decorated and well presented accommodation. From a majority of rooms one can enjoy the fabulous views over adjacent countryside.

## ACCOMMODATION

Reception hall with cloaks cupboard and cloakroom with WC. Double small paned doors to kitchen, Amtico flooring.

Sitting room with double aspect windows with window seat and fabulous views to the rear. Ornate fireplace with gas coal effect fire and marble hearth. Fitted cupboards.

Dining room overlooking front elevation, dado rail and Amtico flooring.

Kitchen/Breakfast room fitted with an extensive range of matching hand painted bespoke wall and floor cabinets with granite worksurfaces. Integrated appliances include fridge/freezer, oven, microwave, dishwasher, washing machine, ceramic hob and extractor. Travertine flooring pantry cupboards and stunning views to rear with doors to decked entertaining area.

First floor landing with access to a part boarded loft with pull down ladder. Shelved linen cupboard.

**CHARMING DETACHED CHALET STYLE PROPERTY IN A STUNNING LOCATION IN ONE OF THE COUNTY'S FINEST VILLAGES.**





Principal bedroom with Juliet balcony allowing enjoyment of the stunning views to the rear. Range of fitted wardrobes and window to the front.

Second bedroom with fitted wardrobes and window to rear overlooking countryside. Third bedroom to the front with fitted shelved cupboards.

Shower room comprising walk in shower, low level WC and pedestal wash hand basin. Full tiling to wall and floors. Designer chrome towel radiator.

### **OUTSIDE**

Parking on a block paved drive leading to a single garage.

Landscaped front garden with well stocked and colourful flower and shrub beds. Seating area and side pedestrian access to the rear garden which is laid principally to lawn with mature trees and shrubs. Raised paved and decked entertaining areas and steps down to the main garden.

Large potting shed/studio which could readily be adapted for use as a study with power supply.





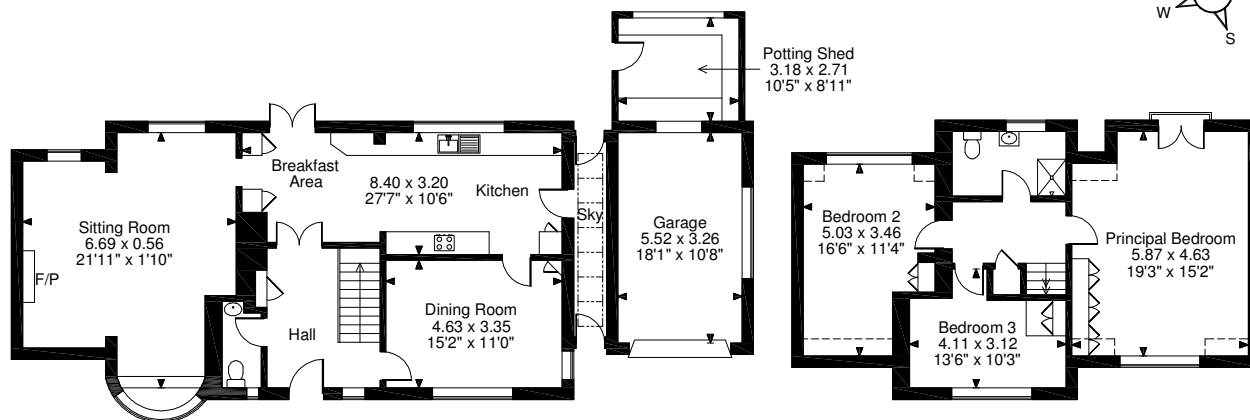
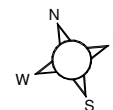
**Meadow View, Grange Lane, Northampton**

**Approximate Gross Internal Area**  
**Main House = 1,716 sq ft / 159 sq m**

**Garage = 194 sq ft / 18 sq m**

**Potting Shed = 93 sq ft / 9 sq m**

**Total = 2,003 sq ft / 186 sq m**



**Ground Floor**

**First Floor**

**FOR ILLUSTRATIVE PURPOSES ONLY - NOT TO SCALE**

The position & size of doors, windows, appliances and other features are approximate only.

□ □ □ □ Denotes restricted head height

© ehouse. Unauthorised reproduction prohibited. Drawing ref. dig/8498221/LPV



**Northampton 01604 608200**

northampton@carterjonas.co.uk

12 Waterside Way, Bedford Road, Northampton NN4 7XD

**carterjonas.co.uk**

Offices throughout the UK

**IMPORTANT INFORMATION**

These particulars are for general information purposes only and do not represent an offer of contract or part of one. Carter Jonas has made every attempt to ensure that the particulars and other information provided are as accurate as possible and are not intended to amount to advice on which you should rely as being factually accurate. You should not assume that the property has all necessary planning, building regulations or other consents and Carter Jonas have not tested any services, facilities or equipment. Any measurements and distances given are approximate only. Purchasers must satisfy themselves of all of the aforementioned by independent inspection or otherwise. Although we make reasonable efforts to update our information, neither Carter Jonas LLP nor anyone in its employment or acting on its behalf makes any representations warranties or guarantees, whether express or implied, in relation to the property, or that the content in these particulars is accurate, complete or up to date. Our images only represent part of the property as it appeared at the time they were taken. If you require further information please contact us.