



STONE MEADOW, OXFORD, OX2
£1,450 per month*

Carter Jonas

STONE MEADOW, OXFORD, OX2

A second floor, newly decorated modern apartment in this desirable north Oxford development.

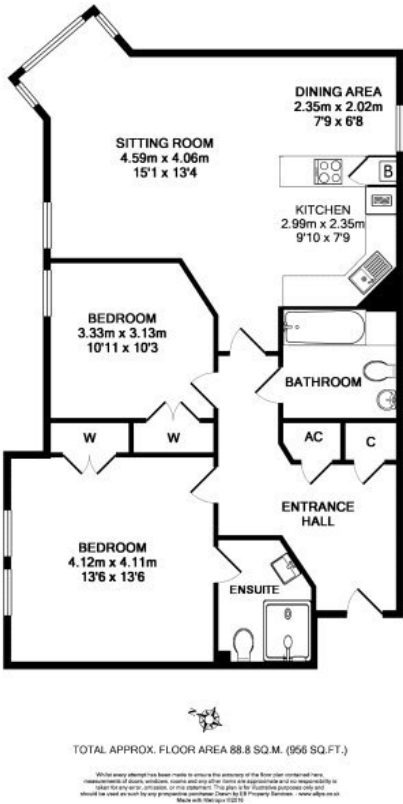
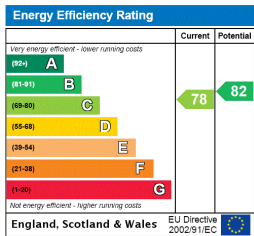
Accommodation consists: entrance hall, open plan living/dining/kitchen, master bedroom with newly fitted ensuite shower room, further double bedroom, main bathroom. One allocated parking space and communal gardens.

Available unfurnished immediately for a long term tenancy.

Holding deposit = 1 weeks rent of £334.62

Deposit is 5 weeks rent (£1450 pcm = £1673.08 deposit)

- 2 bedrooms
- 1 reception
- 2 bathrooms
- Parking
- Unfurnished
- Long term
- EPC = C



Oxford Lettings 01865 511444
 oxford@carterjonas.co.uk
 Mayfield House, 256 Banbury Road, Oxford, Oxfordshire, OX2 7DE

carterjonas.co.uk
 Offices throughout the UK



IMPORTANT INFORMATION

These particulars are for general information purposes only and do not represent an offer of contract or part of one. Carter Jonas has made every attempt to ensure that the particulars and other information provided are as accurate as possible and are not intended to amount to advice on which you should rely as being factually accurate. You should not assume that the property has all necessary planning, building regulations or other consents and Carter Jonas have not tested any services, facilities or equipment. Any measurements and distances given are approximate only. Purchasers or prospective tenants must satisfy themselves of all of the aforementioned by independent inspection or otherwise. Although we make reasonable efforts to update our information, neither Carter Jonas nor anyone in its employment or acting on its behalf makes any representations warranties or guarantees, whether express or implied, in relation to the property, or that the content in these particulars is accurate, complete or up to date. Our images only represent part of the property as it appeared at the time they were taken and do not represent the furnishings included, these are confirmed in a separate inventory. If you require further information please contact us. *Administration fees may apply depending on tenancy type. Please contact your local branch for this information.