



**WESTON ROAD, BLETCHINGTON, OX5**

£1,150 per month\*

**Carter Jonas**



# WESTON ROAD, BLETCHINGDON

A two bedroom apartment arranged over two floors in a picturesque setting in the heart of the village of Bletchington, situated next to the village Green.

Accommodation consists: entrance hall via a communal stairwell shared with one other flat, 2 double bedrooms, one of which could be used as a sitting room, bathroom with a shower over the bath. The top floor has a kitchen and a flexible living space within the eave's. A designated parking space at the property's rear is accessed via a shared driveway.

Bletchington is a popular and accessible village with a Co-op and newly reopened pub. Well placed for access to Oxford and Bicester and the A34 and M40. The nearby villages of Kirtlington and Weston-on-the-Green have various local facilities, including shops, post offices, popular public houses and restaurants. Oxford 8 miles, Oxford Parkway 4.5 miles (London Marylebone 55 minutes), Oxford Station 9 miles (London Paddington 1 hour).

Available on an unfurnished basis from late June for a minimum 12 month term. The property has a low flood risk. Mains services are connected, gas central heating. Internet & Mobile. Further information on availability and speeds can be found on the Ofcom website.

Holding deposit = 1 weeks rent £265

- Council Tax = B
- Deposit £1,326.00
- Long Let,
- Min 12 months
- 2 bedrooms
- 1 reception
- 1 bathroom
- unfurnished
- allocated parking for 1
- Accommodation over 2 floors
- EPC = C

Energy Efficiency Rating		
	Current	Potential
Very energy efficient - lower running costs		
(92-100) <b>A</b>		
(81-91) <b>B</b>		
(69-80) <b>C</b>	78	79
(55-68) <b>D</b>		
(39-54) <b>E</b>		
(21-38) <b>F</b>		
(1-20) <b>G</b>		
Not energy efficient - higher running costs		
England, Scotland & Wales EU Directive 2002/91/EC		

Oxford Lettings 01865 511444

oxford@carterjonas.co.uk

Mayfield House, 256 Banbury Road, Oxford, Oxfordshire, OX2 7DE



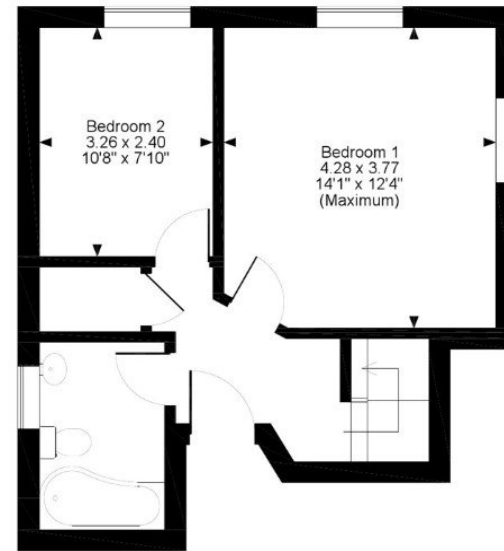
A member of

Exclusive UK affiliate of

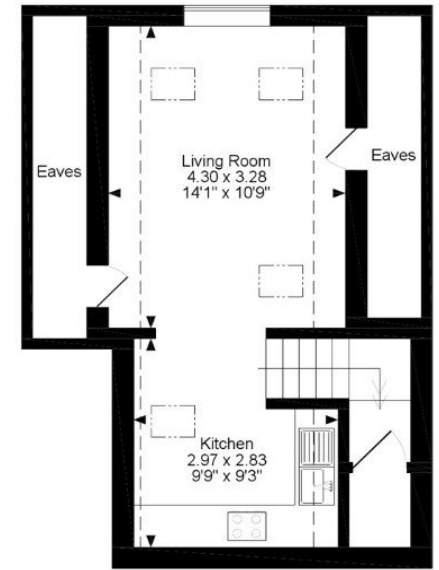
**CHRISTIE'S**  
INTERNATIONAL REAL ESTATE

Classification L2 - Business Data

The Old Post Office Stores, Weston Road, Bletchington, Kidlington  
Approximate Gross Internal Area  
633 sq ft / 59 sq m



First Floor



Second Floor

**FOR ILLUSTRATIVE PURPOSES ONLY - NOT TO SCALE**

The position & size of doors, windows, appliances and other features are approximate only.

□ □ □ □ Denotes restricted head height

© ehouse. Unauthorised reproduction prohibited. Drawing ref. dig/8230459/PHY



## IMPORTANT INFORMATION

These particulars are for general information purposes only and do not represent an offer or contract or part of one. Carter Jonas or anyone in their employment has made every attempt to ensure that the particulars and other information provided are as accurate as possible and they are not intended to amount to advice on which you should rely as being factually accurate. Full information which may be relevant to your decision regarding the property can be found on the property listing on carterjonas.co.uk or a separately available material information sheet, and we would advise you to confirm the details of any material information prior to any offer being submitted. You should not assume that the property has all necessary planning, building regulations or other consents and Carter Jonas has not tested any services, facilities, or equipment. Any measurements and distances given are approximate only. Where Carter Jonas has been provided with a floorplan by a third party, we cannot guarantee that the floorplan has been measured in accordance with IPMS. Purchasers or prospective tenants must satisfy themselves of all of the aforementioned by independent inspection or otherwise. Our images only represent part of the property as it appeared at the time they were taken and do not represent the furnishings included; these are confirmed in a separate inventory. If you require further information, please contact us. \*Administration fees may apply depending on tenancy type. Please contact your local branch for this information.