



**EWERT PLACE, OXFORD, OX2**  
£1,550 per month\*

**Carter Jonas**



---

## EWERT PLACE, OXFORD, OXFORDSHIRE, OX2 7DB

- 2 bedrooms
- Ground floor
- 1 bathroom
- 1 Reception
- Unfurnished
- Parking for 1

### THE PROPERTY

Comprising: Entrance hall, sitting room, kitchen, two bedrooms and bathroom. Parking for one car.

Available mid April for an initial 12 month tenancy on a unfurnished basis.

Council Tax Band E

EPC Rating C

Flood Zone: Very low probability of flooding.

Internet & Mobile Further information on availability and speeds can be found at [checker.ofcom.org.uk](http://checker.ofcom.org.uk).

At a rent of £1,050 per calendar month:

Holding deposit = 1 weeks rent of £357.00

Deposit is 5 weeks rent (£1,550pcm = £1,788.00 deposit)

A well presented two bedroom apartment situated just a few minutes' walk from the shops and amenities in Summertown.

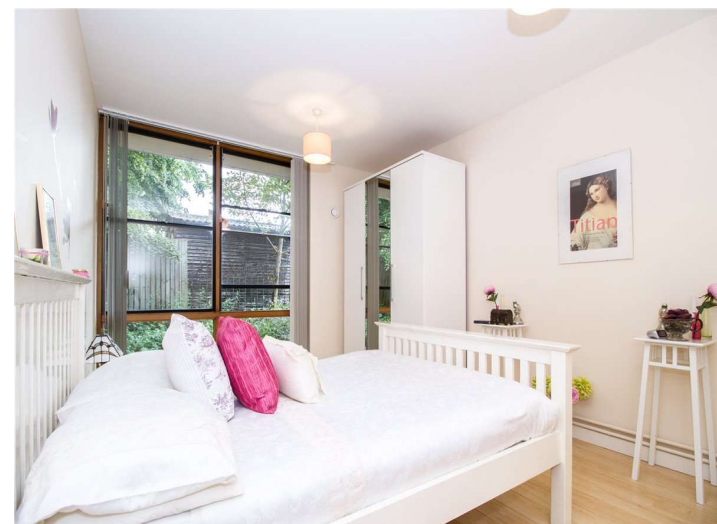


---

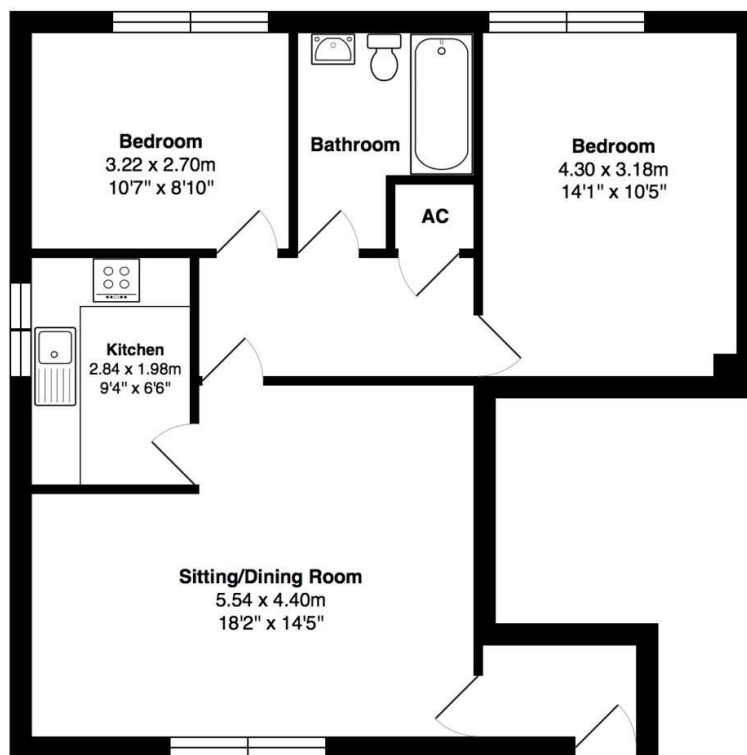
## ADDITIONAL INFORMATION

Offers	Available for a minimum term of 12 months longer terms will be considered
Viewing	Strictly by appointment
Local Authority	Oxford City Council - Council Tax Band E

---







**Gross Internal Area: 65.4 m<sup>2</sup> ... 704 ft<sup>2</sup>**

Whilst every attempt has been made to ensure the accuracy of the floor plan contained here, measurements of doors, windows, rooms, and any other items are approximate. No responsibility is taken for any error, omission, or mis-statement.

This plan is for illustrative purposes only and should be used as such.

Drawn by E8 Property Services. [www.e8ps.co.uk](http://www.e8ps.co.uk)

**T: 01865 511444**

Mayfield House, 256 Banbury Road, Oxford, Oxfordshire, OX2 7DE

E: [oxfordresilettings@carterjonas.co.uk](mailto:oxfordresilettings@carterjonas.co.uk)

A member of



*Exclusive UK affiliate of*

**CHRISTIE'S**  
INTERNATIONAL REAL ESTATE

Classification L2 - Business Data



#### IMPORTANT INFORMATION

These particulars are for general information purposes only and do not represent an offer or contract or part of one. Carter Jonas or anyone in their employment has made every attempt to ensure that the particulars and other information provided are as accurate as possible and they are not intended to amount to advice on which you should rely as being factually accurate. Full information which may be relevant to your decision regarding the property can be found on the property listing on [carterjonas.co.uk](http://carterjonas.co.uk) or a separately available material information sheet, and we would advise you to confirm the details of any material information prior to any offer being submitted. You should not assume that the property has all necessary planning, building regulations or other consents and Carter Jonas has not tested any services, facilities, or equipment. Any measurements and distances given are approximate only. Where Carter Jonas has been provided with a floorplan by a third party, we cannot guarantee that the floorplan has been measured in accordance with IPMS. Purchasers or prospective tenants must satisfy themselves of all of the aforementioned by independent inspection or otherwise. Our images only represent part of the property as it appeared at the time they were taken and do not represent the furnishings included; these are confirmed in a separate inventory. If you require further information, please contact us. \*Administration fees may apply depending on tenancy type. Please contact your local branch for this information.