



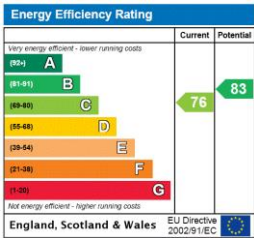
KENYON STREET, LONDON, SW6
£2,500,000

Carter Jonas

KENYON STREET, LONDON, SW6

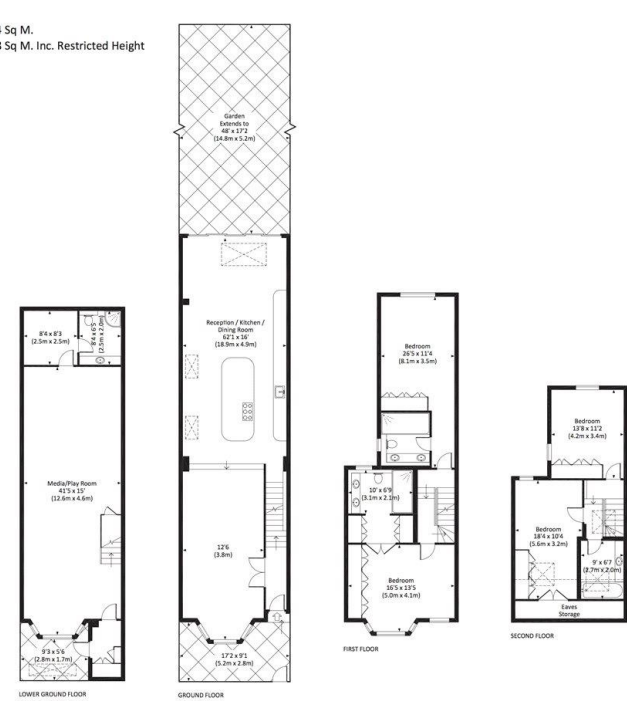
A fabulous 2,800sq ft fully extended and refurbished period terraced house. This home boasts a magnificent open plan double reception room and immaculate kitchen/dining/reception room with integrated Siemens appliances and bifolding doors opening onto the 48 ft landscape garden. The basement has been excavated to create a substantial play/media room, a shower room, utility room and plant room. On the first floor is a bay fronted master bedroom with fitted wardrobes, walk through closet and immaculate shower room. A further guest bedroom, with fitted wardrobes and en-suite shower room completes the first floor. On the top floor are the third and fourth double bedrooms (both with fitted wardrobes) and the third bathroom. Further features include entry phone and Lutron lighting throughout and integrated speakers in many rooms.

- 4 Bedrooms
- Reception/Kitchen/Dining Room
- Bathroom
- 3 Shower Rooms
- Media/Play Room
- Garden
- EPC rating C
- Council Tax Band G



Bishops Park Sales 020 7731 3333
fulhamsales@carterjonas.co.uk
361 Fulham Palace Road, London, SW6 6TA

KENYON STREET, SW6
Approx. gross internal area 2835 Sq Ft. / 263.4 Sq M.
Approx. gross internal area 2936 Sq Ft. / 272.8 Sq M. Inc. Restricted Height



All measurements have been made in accordance with RICS Code of Measuring Practice which are approximate only and only for illustrative purposes. For the avoidance of doubt, Dowling Jones Design shall not be liable for any reliance on these measurements. © 2015 www.dowlingjones.com 020 7610 9933



IMPORTANT INFORMATION

Our property particulars do not represent an offer or contract, or part of one. The information given is without responsibility on the part of the agents or landlord and you should not rely on the information as being factually accurate about the property. Neither Carter Jonas LLP nor anyone in its employment or acting on its behalf has authority to make any representation or warranty in relation to this property. The images shown may only represent part of the property and are as they appeared at the time of being photographed. The areas, measurements and distances are approximate only. If you require any further information, please ask.
* Rent excludes reference and tenancy paperwork fees. Please contact your local branch for this information.

Exclusive UK affiliate of
CHRISTIE'S
INTERNATIONAL REAL ESTATE
Classification L2 - Business Data