



**HARBORD STREET, FULHAM, SW6**  
£1,050,000

**Carter Jonas**



## HARBORD STREET, FULHAM, SW6

A beautifully presented semi-detached three bedroom first floor split level flat offering over 1300 sq. feet of internal accommodation and benefitting from its own front door on this highly sought after road. The first floor offers a bright reception room to the front, whilst to the rear an open kitchen/dining room with stairs leading to the wider than average private garden. Two bedrooms and a modern bathroom complete the first-floor accommodation, whilst the loft has been converted to offer the principal bedroom with eaves storage and a bathroom with separate shower.

Harbord Street is a popular residential street in the Bishops Park conservation area with Bishops Park and leafy riverside walks nearby. The location is close to the Thames and Bishop's Park, with the transport links of Hammersmith Broadway (Circle, Hammersmith & City, Piccadilly and District lines) and Putney Bridge (District line) 0.9 miles away.

### AMENITIES

- 3 Bedrooms
- 2 Bathrooms
- Kitchen/Dining Room
- Reception Room
- Own Private Entrance
- Private Garden

**TENURE** Share of Freehold

**LOCAL AUTHORITY** Hammersmith and Fulham

**EPC BAND** D

**A BEAUTIFULLY PRESENTED THREE BEDROOM FIRST FLOOR SPLIT LEVEL FLAT OFFERING OVER 1300 SQ FEET OF INTERNAL ACCOMMODATION.**



Classification E2 - Business Data





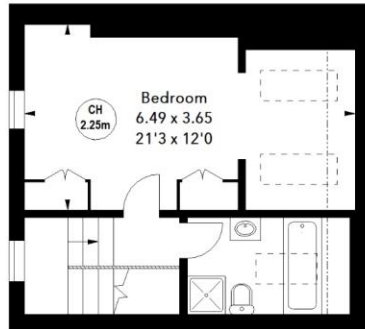


Classification L2 - Business Data



## Harbord Street, SW6

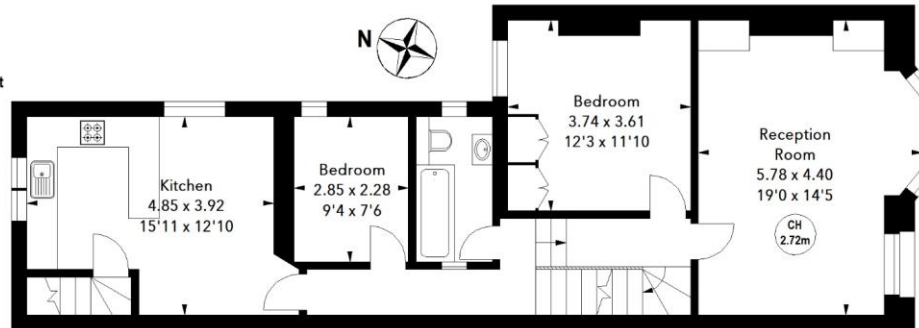
Approximate Area = 122.35 sq m / 1317 sq ft



Second Floor

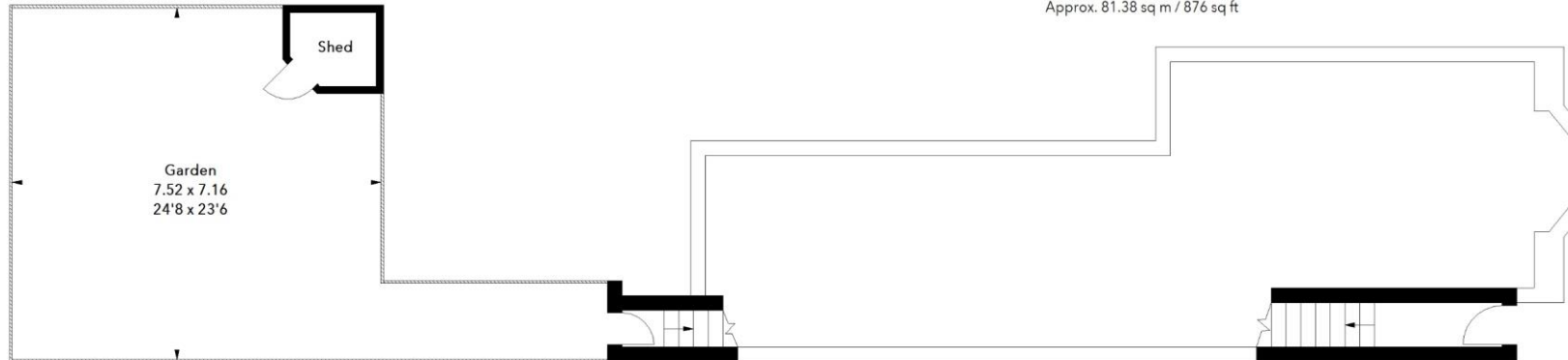
Approx. 34.93 sq m / 376 sq ft

Key :  
CH - Ceiling Height



First Floor

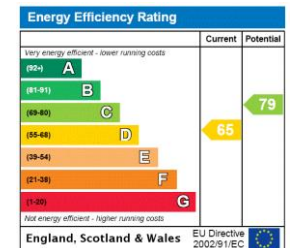
Approx. 81.38 sq m / 876 sq ft



Ground Floor

Approx. 6.04 sq m / 65 sq ft

The floor plan is not to scale and measurements and areas shown are approximate and therefore should be used for illustrative purposes only. The plan has been prepared in accordance with the RICS code of Measuring Practice and whilst we have confidence in the information produced, it must not be relied on. If there is any aspect of particular importance, you should carry out or commission your own inspection of the property.



Fulham 020 7731 3333

bishopspark@carterjonas.co.uk  
361 Fulham Palace Road, London, SW6 6TA

carterjonas.co.uk  
Offices throughout the UK

Exclusive UK affiliate of

**CHRISTIE'S**  
INTERNATIONAL REAL ESTATE

### IMPORTANT INFORMATION

These particulars are for general information purposes only and do not represent an offer or contract or part of one. Carter Jonas or anyone in their employment has made every attempt to ensure that the particulars and other information provided are as accurate as possible and they are not intended to amount to advice on which you should rely as being factually accurate. Full information which may be relevant to your decision regarding the property can be found on the property listing on carterjonas.co.uk or, (including off market properties) on the brochure or a separately available material information sheet. We would advise you to confirm the details of any material information prior to any offer being submitted. You should not assume that the property has all necessary planning, building regulations or other consents and Carter Jonas has not tested any services, facilities or equipment. Any measurements and distances given are approximate only. Where Carter Jonas has been provided with a floorplan by a third party, we cannot guarantee that the floorplan has been measured in accordance with IPMS. Purchasers must satisfy themselves of all of the aforementioned by independent inspection or otherwise. Our images only represent part of the property as it appeared at the time they were taken and do not represent the furnishings included; these are confirmed in a separate inventory. If you require further information, please contact us.

Classification L2 - Business Data