



SEYMOUR ROAD, LONDON, W4
£1,750 per month*

Carter Jonas

SEYMOUR ROAD, LONDON, W4

A superb one double bedroom flat situated on the first floor of a pretty period property. EPC rating D.

- Excellent condition throughout
- One double bedroom
- Eat-in Kitchen
- Large Bathroom Suite
- Front Reception Room
- Unfurnished
- Pets allowed

THE PROPERTY

The property has a large eat in kitchen, recently refurbished bathroom, spacious double bedroom and bright living room with bay window.

The property is located on a quiet residential cul-de-sac and benefits from its own secluded private garden. This flat is 0.3 miles from Chiswick Park tube. Located only moments from the shopping, local eateries and bars of Turnham Green and Chiswick High Road.

Holding deposit: 1 week's rent

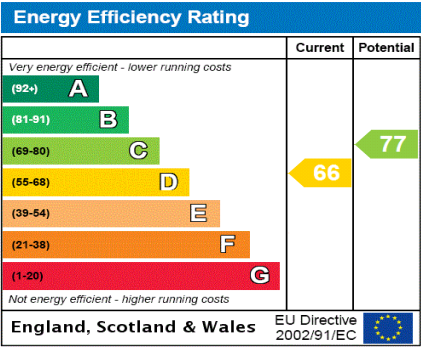
Security deposit: 5 weeks' rent

Council tax: Band D

Pets: allowed

Parking: on street via a permit





ADDITIONAL INFORMATION

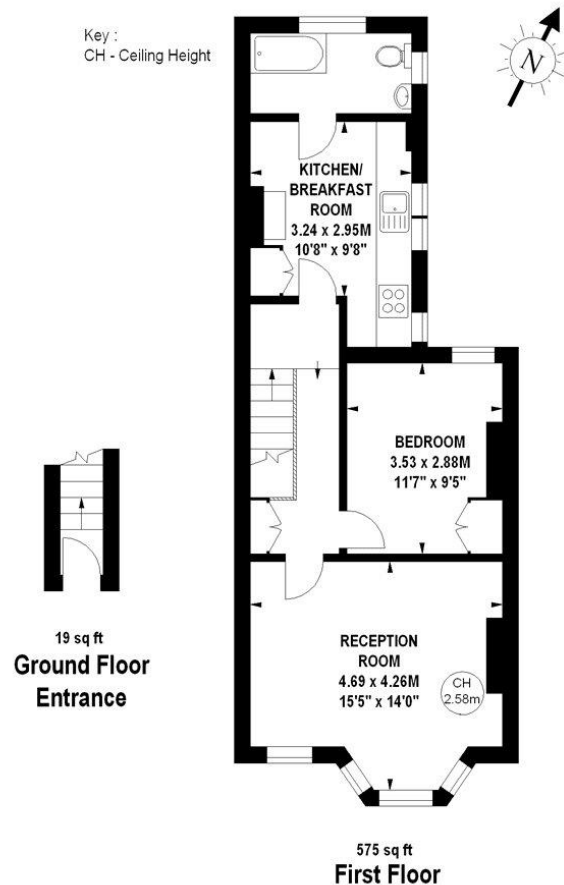
Offers	Available for a minimum term of 12 months Longer terms will be considered
Viewing	Strictly by appointment
Local Authority	Ealing Council Tax Band D



Seymour Road, W4

Approximate gross internal area

55.18 sq m / 594 sq ft



The floor plan is not to scale and measurements and areas shown are approximate and therefore should be used for illustrative purposes only. The plan has been prepared in accordance with the RICS code of Measuring Practice and whilst we have confidence in the information produced, it must not be relied on. If there is any aspect of particular importance, you should carry out or commission your own inspection of the property.
Copyright of FeaturePRO.

T: 020 7751 8898

361 Fulham Palace Road, London, SW6 6TA

E: parsonsgreen.residential.lettings@carterjonas.co.uk

A member of



Exclusive UK affiliate of

CHRISTIE'S
INTERNATIONAL REAL ESTATE

Classification L2 - Business Data



IMPORTANT INFORMATION

These particulars are for general information purposes only and do not represent an offer or contract or part of one. Carter Jonas or anyone in their employment has made every attempt to ensure that the particulars and other information provided are as accurate as possible and they are not intended to amount to advice on which you should rely as being factually accurate. Full information which may be relevant to your decision regarding the property can be found on the property listing on carterjonas.co.uk or a separately available material information sheet, and we would advise you to confirm the details of any material information prior to any offer being submitted. You should not assume that the property has all necessary planning, building regulations or other consents and Carter Jonas has not tested any services, facilities, or equipment. Any measurements and distances given are approximate only. Where Carter Jonas has been provided with a floorplan by a third party, we cannot guarantee that the floorplan has been measured in accordance with IPMS. Purchasers or prospective tenants must satisfy themselves of all of the aforementioned by independent inspection or otherwise. Our images only represent part of the property as it appeared at the time they were taken and do not represent the furnishings included; these are confirmed in a separate inventory. If you require further information, please contact us. *Administration fees may apply depending on tenancy type. Please contact your local branch for this information.