



ELSENHAM STREET, LONDON, SW18

£4,975.00 per month*

Carter Jonas

ELSENHAM STREET, LONDON, SW18 5NS

- Four double bedrooms
- Two bathrooms
- Double reception room
- Eat in kitchen
- Available from early September
- Unfurnished
- Long term let
- Large garden
- Outdoor kitchen
- Separate utility room with WC

THE PROPERTY

This elegant property, thoughtfully arranged over three floors, maintains its robust original features while offering modern comforts. The home includes four spacious double bedrooms, one four-piece bathroom with underfloor heating on the first floor, and an additional bathroom on the top floor. The master bedroom is particularly noteworthy, featuring ample storage.

On the ground floor, you will find a charming double reception room at the front of the house with partition doors to separate into two separate reception rooms. This seamlessly flows into a large, extended family kitchen featuring a log burner, fitted ceiling speakers and a separate casual seating/TV area. The ground floor is completed with a utility room and downstairs bathroom. The kitchen, utility and downstairs bathroom all have the benefit of underfloor heating. The space is perfect for everyday living and hosting gatherings, opening directly onto the beautifully landscaped garden, with outdoor speakers, fantastic lighting and fitted bench seating, ideal for outdoor relaxation and family activities. The outdoor kitchen, featuring flawlessly finished carbon steel units and worktop, offers a unique cooking setup designed to delight your guests. From family gatherings to impromptu celebrations, this outdoor kitchen serves as the centrepiece for memorable moments.

Conveniently located within a short walking distance of the local shops and amenities in Southfields and Wimbledon Park, the residence is also close to several highly regarded local schools, District Line Underground Stations, and the lush green spaces of Wimbledon Park. This makes it an ideal location for family living.

This residence boasts beautiful thoughtful design and is situated in a location where you can enjoy all the amenities of Southfields with easy access to central London.

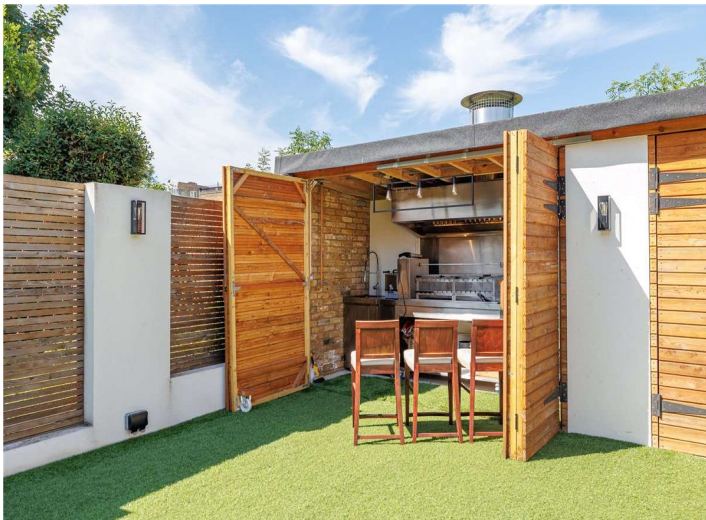
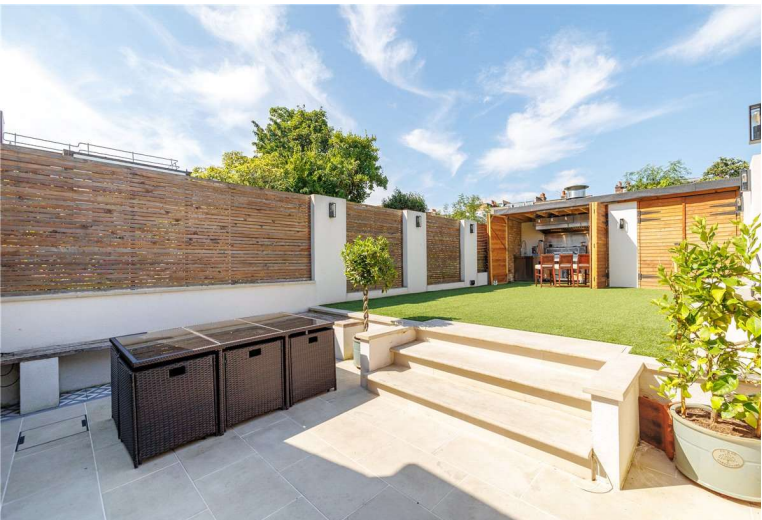
A beautiful, newly redecorated family home with a good sized southwest facing garden and outdoor kitchen, located on this prime road in Southfields.



ADDITIONAL INFORMATION

Offers	Available for a minimum term of 12 months longer terms will be considered
Viewing	Strictly by appointment
Local Authority	London Borough of Wandsworth - Council Tax Band F

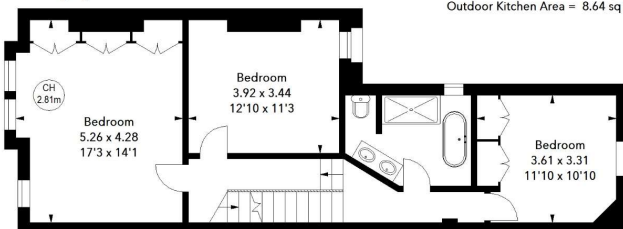
EPC Rating: C
Council tax band F (refer to Wandsworth's council website for current cost).
Available for a minimum term of 12 months.
Mains gas central heating, mains electric and mains water.
Internet & Mobile:
Further information on availability and speeds can be found on Ofcom's website.
At a rent of £4,975.00 per month:
Holding deposit of 1 weeks rent £1,148.07
Security deposit of 6 weeks rent £6,888.46



Elsenham Street, SW18

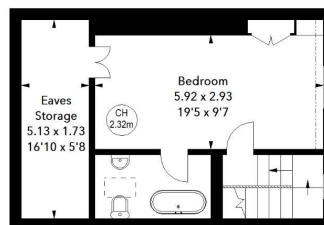
Approximate Area = 196.67 sq m / 2117 sq ft
(Including Eaves Storage & Excluding Outdoor Kitchen)
Eaves Storage Area = 9.01 sq m / 97 sq ft
Outdoor Kitchen Area = 8.64 sq m / 93 sq ft

Key :
CH - Ceiling Height



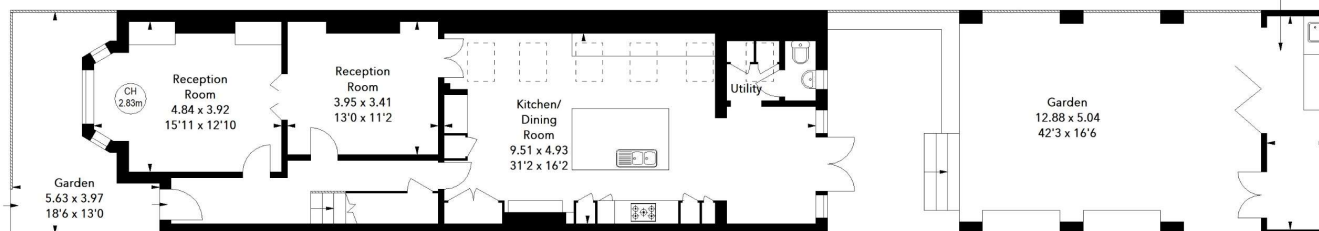
First Floor

Approx. 66.33 sq m / 714 sq ft



Second Floor

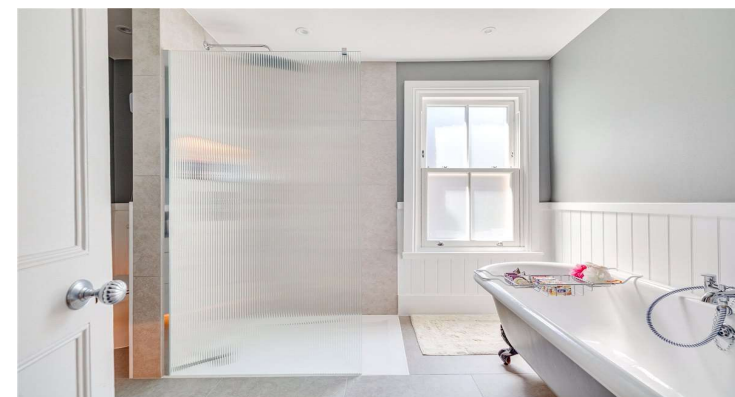
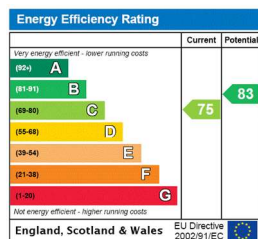
Approx. 40.13 sq m / 432 sq ft



Ground Floor

Approx. 90.21 sq m / 971 sq ft

The floor plan is not to scale and measurements and areas shown are approximate and therefore should be used for illustrative purposes only. The plan has been prepared in accordance with the RICS code of Measuring Practice and whilst we have confidence in the information produced, it must not be relied on. If there is any aspect of particular importance, you should carry out or commission your own inspection of the property.



T: 020 7518 3260

24 Replingham Road, London, SW18 5LR

E: sou.res.sales@carterjonas.co.uk

A member of



Exclusive UK affiliate of

CHRISTIE'S
INTERNATIONAL REAL ESTATE

Classification L2 - Business Data

IMPORTANT INFORMATION

These particulars are for general information purposes only and do not represent an offer or contract or part of one. Carter Jonas or anyone in their employment has made every attempt to ensure that the particulars and other information provided are as accurate as possible and they are not intended to amount to advice on which you should rely as being factually accurate. Full information which may be relevant to your decision regarding the property can be found on the property listing on carterjonas.co.uk or a separately available material information sheet, and we would advise you to confirm the details of any material information prior to any offer being submitted. You should not assume that the property has all necessary planning, building regulations or other consents and Carter Jonas has not tested any services, facilities, or equipment. Any measurements and distances given are approximate only. Where Carter Jonas has been provided with a floorplan by a third party, we cannot guarantee that the floorplan has been measured in accordance with IPMS. Purchasers or prospective tenants must satisfy themselves of all of the aforementioned by independent inspection or otherwise. Our images only represent part of the property as it appeared at the time they were taken and do not represent the furnishings included; these are confirmed in a separate inventory. If you require further information, please contact us. *Administration fees may apply depending on tenancy type. Please contact your local branch for this information.