



# Development Site at Maggs Lane Castle Cary Somerset BA7 7HB

## A development site for seven dwellings.

The Development Site at Maggs Lane comprises a residential development site with planning permission for four no. substantial detached dwellings and a terrace of three no. dwellings located on the edge of the sought after town of Castle Cary.

For sale by private treaty.



View from Maggs Lane showing proposed Units 1 and 2



View from Ansford Hill (A371) showing proposed Units 3 and 4

## Location

The Site is located on the edge of the sought after town of Castle Cary. Castle Cary offers a range of traditional shops to cater for most day-to-day needs, whilst the nearby towns of Glastonbury, Street, Wells, Frome, Wincanton, Sherborne, and Yeovil are all close by and offer a wider range of shopping facilities. In addition, the larger cities/towns of Salisbury, Taunton, Bath, and Bristol are within easy reach of the site.

The renowned “Newt in Somerset” is located just outside of Castle Cary and offers substantial gardens, walks, a hotel and spa, farm shop, and restaurant.

Castle Cary has its own mainline railway station with direct trains to London Paddington, whilst the A303 is within easy reach of the site.

The area offers an excellent range of schools within both the state and independent sectors; the site is opposite Ansford Academy, whilst Castle Cary Primary School is within walking distance, and independent schools include the Sherborne and Bruton schools, Millfield, Wells Cathedral, Hazelgrove and Port Regis.



View from Yeabsleys Way showing proposed Units 5, 6, and 7



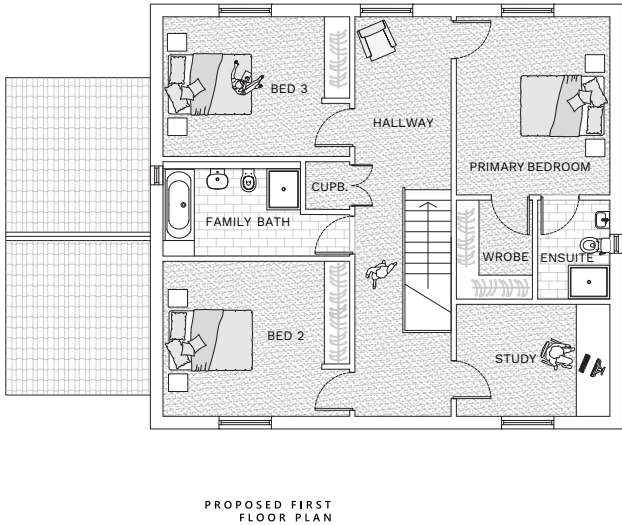
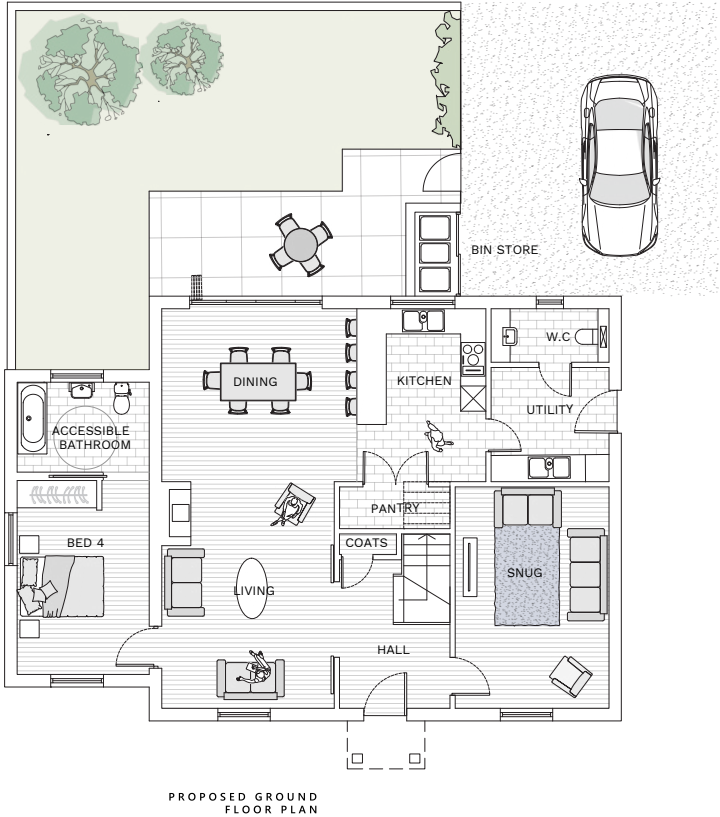
Property

The development site comprises a level pasture enclosure on the edge of Castle Cary adjoining Maggs Lane, Yeabsleys Way, and the A371.

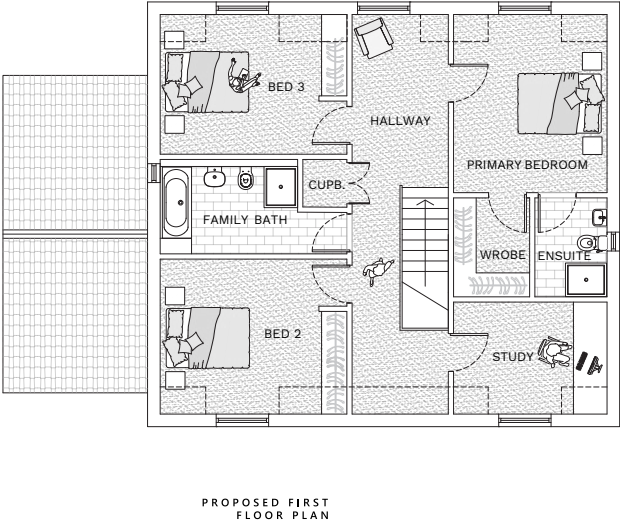
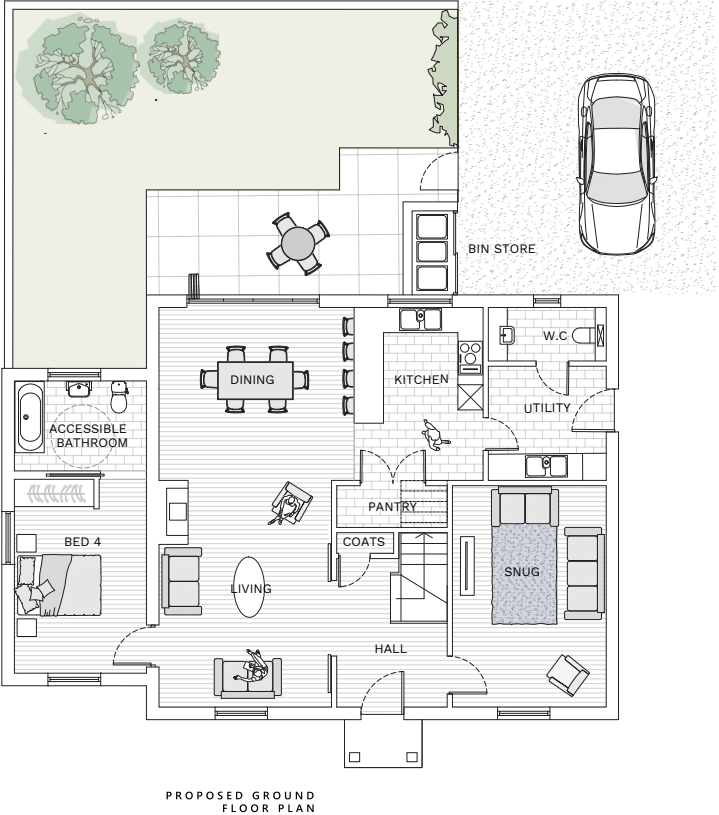
Planning permission has been obtained for seven no. dwellings with access from Yeabsleys Way, together with associated landscaping works and parking on the site. The dwellings comprise four no. detached four-bedroom dwellings together with a terrace of three no. three-bedroom dwellings, all of local stone elevations under clay tiled rooves. The four-bedroom dwellings will offer gross internal areas of about 227 square metres with the three-bedroom dwellings offering gross internal areas of about 117 square metres.

Unit No.	House Type	Proposed GIA
Unit 1	Type 1	226.57sqm
Unit 2	Type 2	226.57sqm
Unit 3	Type 2	226.57sqm
Unit 4	Type 1	226.57sqm
Unit 5	Type 3	116.98sqm
Unit 6	Type 3	116.98sqm
Unit 7	Type 3	116.98sqm

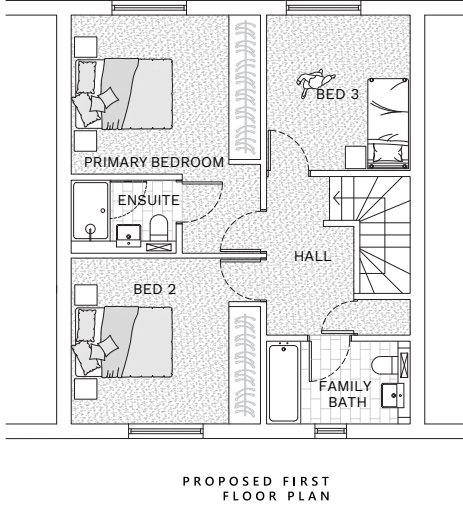
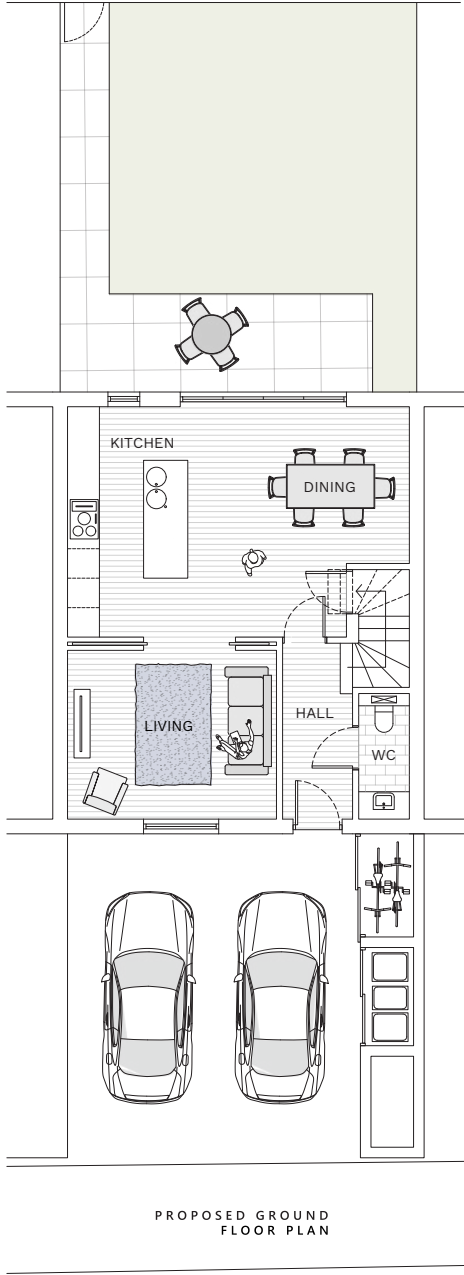
Type 1 Floorplan



Type 2 Floorplan



Type 3 Floorplan



Method of Sale

The property is offered for sale by private treaty with a guide price of £1,000,000.

Tenure & Possession

The freehold of the property is offered for sale with vacant possession available upon completion.

Planning

Planning permission was granted by Somerset Council (formerly South Somerset District Council) in September 2024 under application reference number 23/00297/FUL.

Services

Wessex Water have confirmed that mains water and drainage services run within the roads adjacent to the site. There are also overhead mains electricity lines crossing the land. Potential purchasers should make their own enquiries to confirm the availability of service connections to the site.

Health & Safety

Potential purchasers should take particular care when inspecting the site.

Local Authority

Somerset Council  
(formerly South Somerset District Council)  
[www.somerset.gov.uk](http://www.somerset.gov.uk)

Viewings

Potential purchasers may view the site during reasonable daylight hours, after informing the selling agents, Carter Jonas, on 01823 428590.

Directions

Heading from Castle Cary Railway Station towards Wincanton on the A371, turn left at Ansford onto Maggs Lane. Turn right onto Yeabsleys Way. The site is located on the right-hand side.



///case.processor.grit





## Taunton

01823 428 593 | [jack.mitchell@carterjonas.co.uk](mailto:jack.mitchell@carterjonas.co.uk)  
Quad 4000, Blackbrook Park Avenue, Taunton, Somerset, TA1 2PX

## Planning and Development

01865 404478 | [james.cordery@carterjonas.co.uk](mailto:james.cordery@carterjonas.co.uk)  
Mayfield House, 256 Banbury Road, Summertown, Oxford OX2 7DE

## Important Information

These particulars are for general information purposes only and do not represent an offer or contract or part of one. Carter Jonas or anyone in their employment has made every attempt to ensure that the particulars and other information provided are as accurate as possible and they are not intended to amount to advice on which you should rely as being factually accurate. Full information which may be relevant to your decision regarding the property can be found on the property listing on [carterjonas.co.uk](http://carterjonas.co.uk) or, (including off market properties) on the brochure or a separately available material information sheet. We would advise you to confirm the details of any material information prior to any offer being submitted. You should not assume that the property has all necessary planning, building regulations or other consents and Carter Jonas has not tested any services, facilities or equipment. Any measurements and distances given are approximate only. Where Carter Jonas has been provided with a floorplan by a third party, we cannot guarantee that the floorplan has been measured in accordance with IPMS. Purchasers must satisfy themselves of all of the aforementioned by independent inspection or otherwise. Our images only represent part of the property as it appeared at the time they were taken and do not represent the furnishings included; these are confirmed in a separate inventory. If you require further information, please contact us.

**carterjonas.co.uk**  
Offices throughout the UK



**Carter Jonas**

*Exclusive UK affiliate of*  
**CHRISTIE'S**  
INTERNATIONAL REAL ESTATE