



ST. JAMES'S DRIVE, LONDON, SW17

Carter Jonas

ST. JAMES'S DRIVE, LONDON, SW17

A charming, detached C. 1856 sq ft four-bedroom period cottage, discreetly tucked away off St James Drive, close to Wandsworth Common (0.4 miles). Chain free.

Inside

If you tire of standard issue houses, this may be the home for you. Set back from the road, with a pretty façade, off-street parking and a bright and welcoming hallway, the house gives the best first impression.

The ground floor comprises four interconnecting spaces, with a calm and relaxing reception room at the front of the house, leading onto a small study/office space. Between the kitchen and main reception room is the second reception room, currently in use as a games room. The kitchen/ dining room then has bifold French doors that open onto a tranquil courtyard garden. A superb utility room and cloakroom completes the ground floor.

Upstairs, on the first floor, the house offers four double bedrooms and a main bathroom, with the principal bedroom benefiting from an ensuite shower room.

Location

This rare, detached house is set back from the road off St James Drive, conveniently located close to the green open spaces of Wandsworth Common (0.4 miles) with its overground station connecting into Victoria. The Underground (Northern Line) is also located closeby at Balham (0.7 mile) and Tooting Bec (0.4 miles).

N.B. Please note that all photos of the property were taken in 2018.

AMENITIES

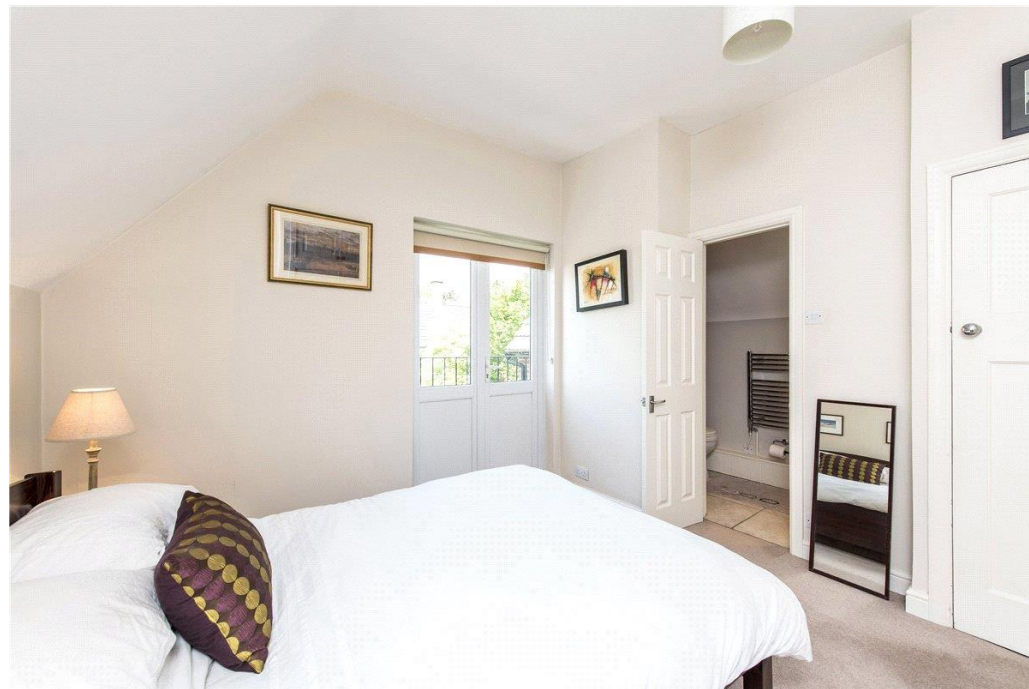
- Detached Freehold house
- 1856 SQFT
- 4 bedrooms
- Kitchen/ dining room
- 2 reception rooms
- Private courtyard rear garden
- Front garden space
- Shared driveway access
- Off-street parking
- Chain free
- Wandsworth Common (0.4 miles)
- Balham (0.7 miles)
- Tooting Bec (0.4 miles)

TENURE Freehold

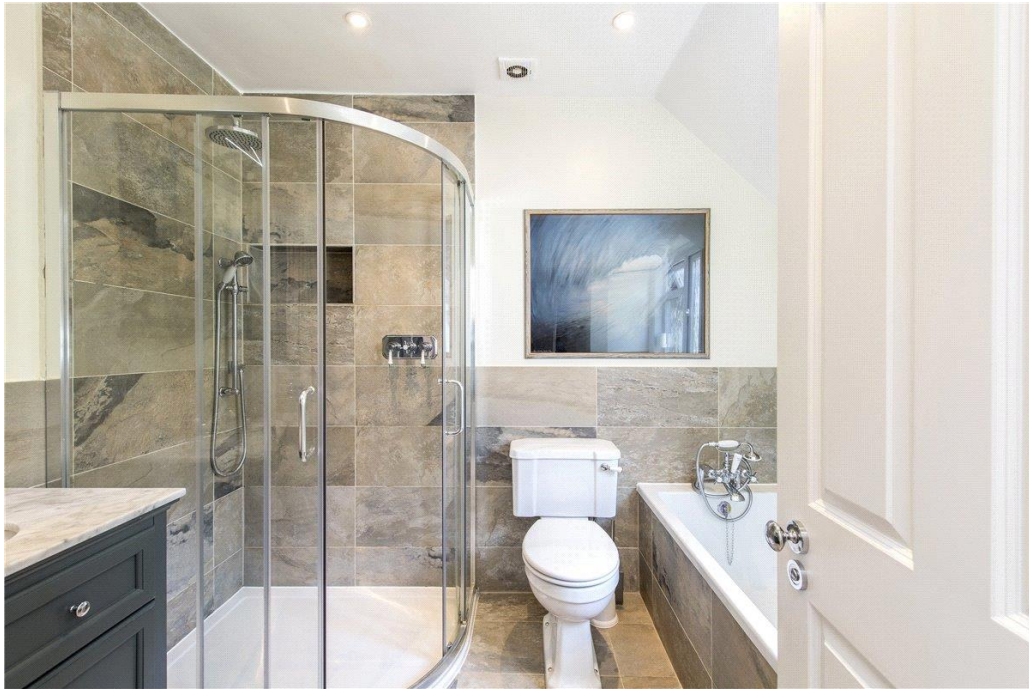
LOCAL AUTHORITY London Borough of Wandsworth

EPC BAND E





Classification L2 - Business Data



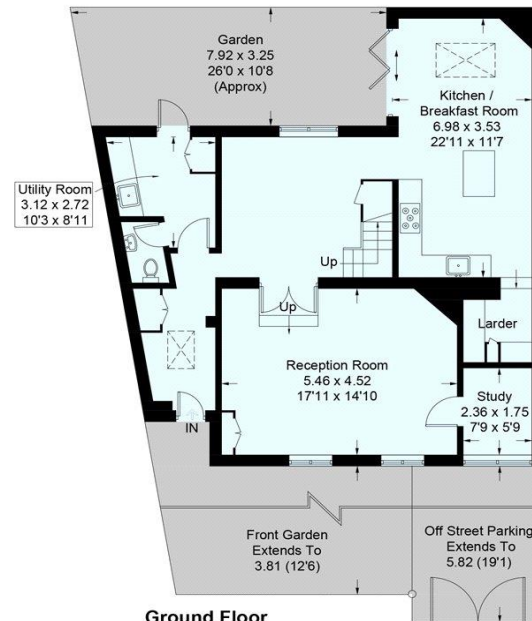
Classification L2 - Business Data

St. James's Drive, SW17

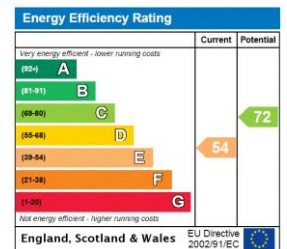
Approximate Gross Internal Area
172.4 sq m / 1856 sq ft



First Floor
75.8 sq m / 816 sq ft



Ground Floor
96.6 sq m / 1040 sq ft



Wandsworth Sales 020 8767 7711

wandsworth@carterjonas.co.uk
19 Bellevue Road, London, SW17 7EG

carterjonas.co.uk
Offices throughout the UK

Exclusive UK affiliate of

CHRISTIE'S
INTERNATIONAL REAL ESTATE

Classification L2 - Business Data

IMPORTANT INFORMATION

These particulars are for general information purposes only and do not represent an offer of contract or part of one. Carter Jonas has made every attempt to ensure that the particulars and other information provided are as accurate as possible and are not intended to amount to advice on which you should rely as being factually accurate. You should not assume that the property has all necessary planning, building regulations or other consents and Carter Jonas have not tested any services, facilities or equipment. Any measurements and distances given are approximate only. Purchasers must satisfy themselves of all of the aforementioned by independent inspection or otherwise. Although we make reasonable efforts to update our information, neither Carter Jonas LLP nor anyone in its employment or acting on its behalf makes any representations warranties or guarantees, whether express or implied, in relation to the property, or that the content in these particulars is accurate, complete or up to date. Our images only represent part of the property as it appeared at the time they were taken. If you require further information please contact us.