



17 WHARF HILL

Winchester, Hampshire, SO23 9NQ

Carter Jonas

17 WHARF HILL, WINCHESTER, HAMPSHIRE, SO23 9NQ

- 2 bedrooms
- Sitting room
- Dining room
- Kitchen
- Bathroom
- Courtyard garden
- Popular Wharf Hill location

DESCRIPTION

The property is accessed via the front door which leads directly onto the sitting room, which has a feature fireplace, fitted cabinetry and a sash window to the front. The sitting room is open plan on to the dining room, with understairs cupboard and stairs leading to the first floor. The kitchen is located to the rear of the property and has a range of base and eye level units with a wooden worktop and integrated appliances, and double doors to the rear garden. There are two bedrooms on the first floor and a family bathroom. To the rear of the property is a charming walled courtyard garden.

PRETTY TWO-BEDROOM VICTORIAN HOUSE, WELL LOCATED FOR THE AMENITIES OF WINCHESTER



LOCATION

17 Wharf Hill is in a conservation area close to the heart of the city centre and is less than ½ mile walk from King Alfred's statue and the bottom of the High Street with its diverse range of shops, supermarkets, cafes and restaurants. The mainline station (London Waterloo within 1 hour) is approximately a mile walk from the property. Winchester offers excellent road links to London via the M3, the south coast via the M27, and north to Newbury and Oxford via the A34. Southampton Airport is just 10 miles away by road or 15 minutes by rail. There are some delightful walks and cycle routes along the River Itchen, Winnall Moors, the water meadows and St. Catherine's Hill which are also easily accessed from the property.

ADDITIONAL INFORMATION

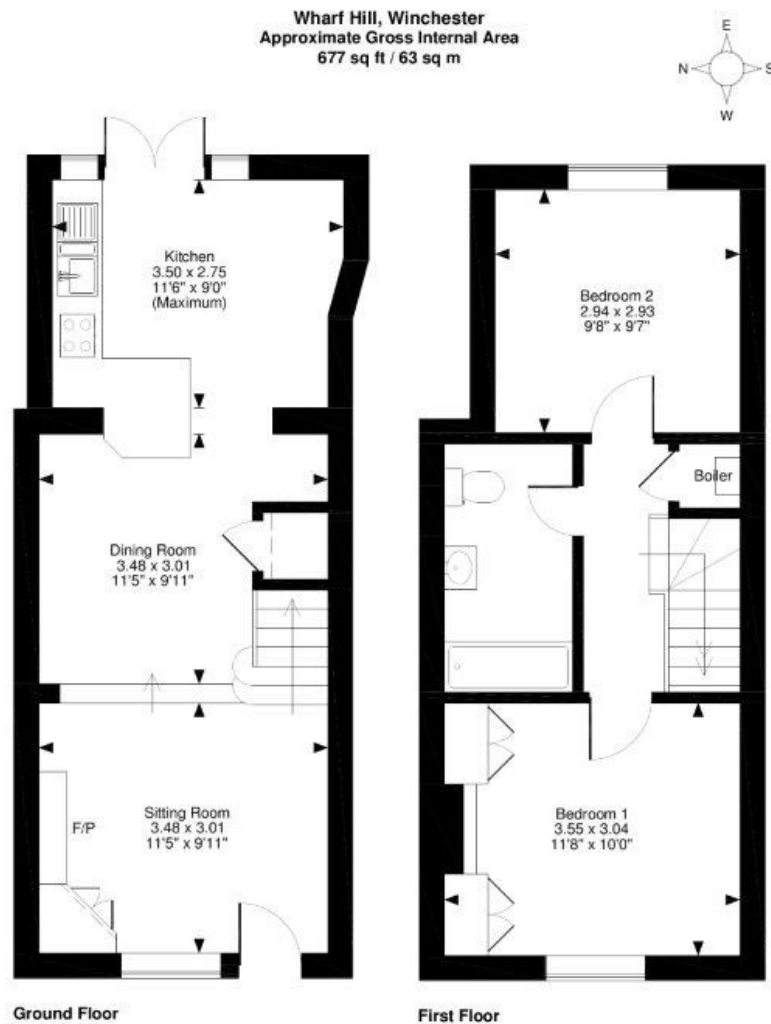
Tenure: Freehold.

Services: Mains water, electricity, gas and drainage. Gas central heating. Broadband: Fibre to the Cabinet (FTTC). For internet and mobile services check Ofcom's website.

Local Authority: Winchester City Council. Council Tax Band D.

Viewings: Strictly by appointment with Carter Jonas, 01962 842742.

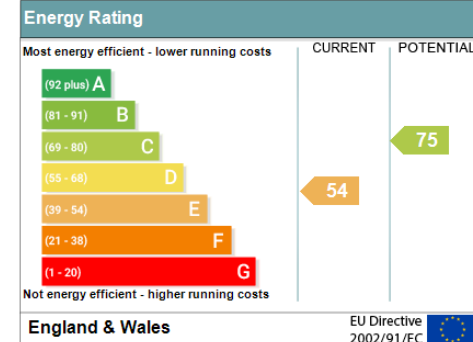




FOR ILLUSTRATIVE PURPOSES ONLY - NOT TO SCALE
The position & size of doors, windows, appliances and other features are approximate only.
□ □ □ □ Denotes restricted head height
© ehouse. Unauthorised reproduction prohibited. Drawing ref. dig/8256174/JPN



Address: 17 Wharf Hill, WINCHESTER, SO23 9NQ
RRN: 5000-3732-0322-5408-3843



Winchester 01962 842742
winchester@carterjonas.co.uk
9a Jewry Street, Winchester, SO23 8RZ

carterjonas.co.uk
Offices throughout the UK

Exclusive UK affiliate of
CHRISTIE'S
INTERNATIONAL REAL ESTATE

IMPORTANT INFORMATION

These particulars are for general information purposes only and do not represent an offer of contract or part of one. Carter Jonas has made every attempt to ensure that the particulars and other information provided are as accurate as possible and are not intended to amount to advice on which you should rely as being factually accurate. You should not assume that the property has all necessary planning, building regulations or other consents and Carter Jonas have not tested any services, facilities or equipment. Any measurements and distances given are approximate only. Purchasers must satisfy themselves of all of the aforementioned by independent inspection or otherwise. Although we make reasonable efforts to update our information, neither Carter Jonas LLP nor anyone in its employment or acting on its behalf makes any representations warranties or guarantees, whether express or implied, in relation to the property, or that the content in these particulars is accurate, complete or up to date. Our images only represent part of the property as it appeared at the time they were taken. If you require further information please contact us.