



6 SAND HUTTON COURT, SAND HUTTON
£345,000

Carter Jonas

6 SAND HUTTON COURT, SAND HUTTON, YO41 1LU

Nestled in the picturesque village of Sand Hutton, this stunning 2 bedroom barn conversion exudes charm and character. The property has been tastefully renovated to create a stylish and surprisingly spacious living space, perfect for modern living.

The welcoming entrance hallway leads into the dining hall and spacious living room, featuring a vaulted ceiling, exposed wooden beams and a working open fireplace, creating a warm and inviting atmosphere. The well-appointed kitchen is well designed, with ample storage space and modern appliances. There are several sky lights throughout the property allowing an abundance of natural light to flood into each room.

There are 2 bedrooms with the principle benefitting from built in wardrobes, the modern bathroom is sleek and stylish, with a luxurious feel.

Outside, the property benefits from a pretty garden, ideal for enjoying the tranquil surroundings and al fresco dining. The property also benefits from garaging and off-street parking.

The property would work for a wide range of buyers including 1st time buyers, downsizers and those looking for an investment property as a holiday let.

Located just a short drive from the historic city of York, residents can enjoy the best of both worlds - a peaceful village setting with easy access to the amenities and attractions of the city. Don't miss your chance to own this beautiful barn conversion in a sought-after location. The property is accessed through the archway into a communal courtyard.

Services.

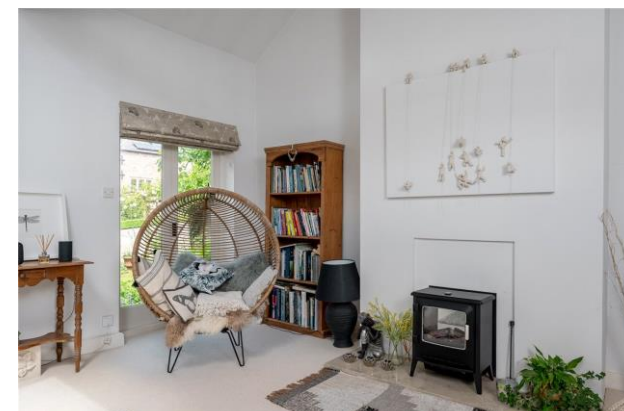
Mains services are installed. Oil fired central heating.

- Broadband Coverage - Please go to <https://checker.ofcom.org.uk/en-gb/broadband-coverage>
- Mobile coverage - please go to <https://checker.ofcom.org.uk/>

TENURE Freehold

EPC BAND F

A PRETTY BARN CONVERSION BENEFITTING FROM GARAGING AND OFF STREET PARKING; SITUATED IN A POPULAR VILLAGE TO THE NORTH EAST OF YORK.





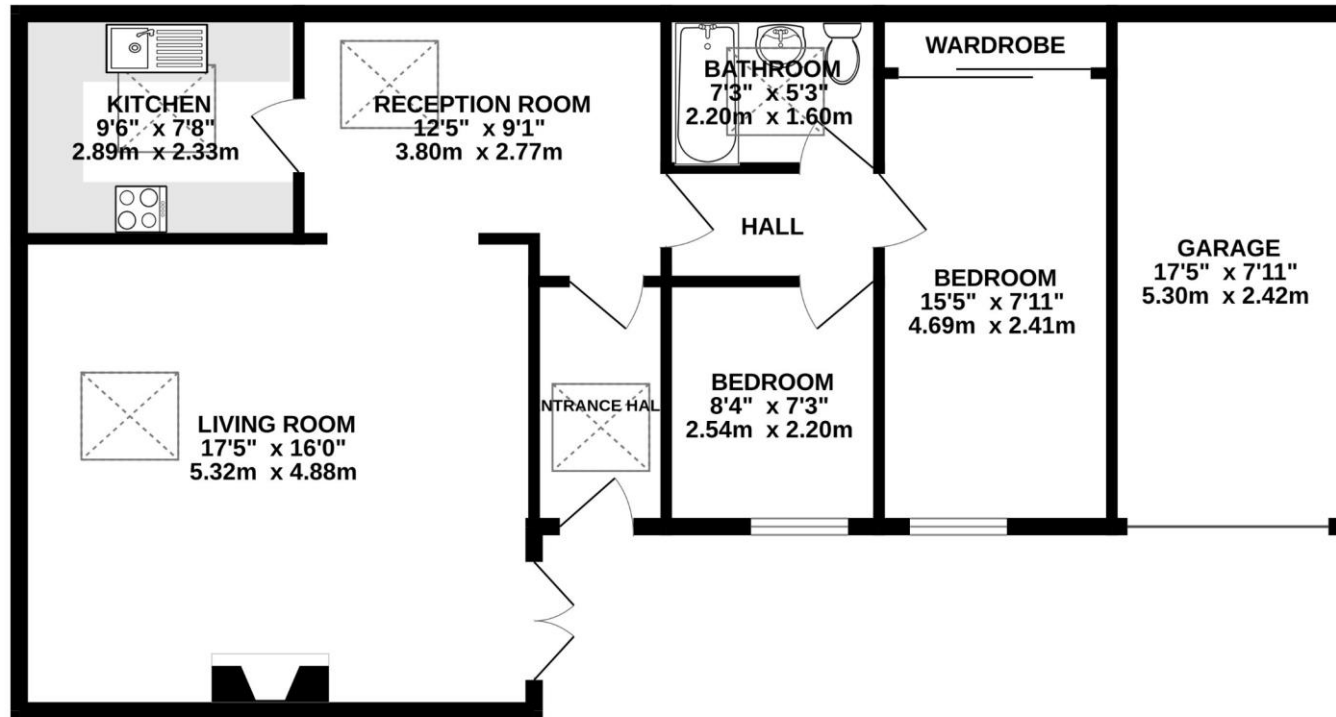
Classification L2 - Business Data



Classification L2 - Business Data

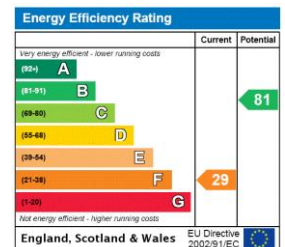
GROUND FLOOR

885 sq.ft. (82.2 sq.m.) approx.



TOTAL FLOOR AREA : 885 sq.ft. (82.2 sq.m.) approx.

Whilst every attempt has been made to ensure the accuracy of the floorplan contained here, measurements of doors, windows, rooms and any other items are approximate and no responsibility is taken for any error, omission or mis-statement. This plan is for illustrative purposes only and should be used as such by any prospective purchaser. The services, systems and appliances shown have not been tested and no guarantee as to their operability or efficiency can be given.
Made with Metropix ©2024



York 01904 558200

york@carterjonas.co.uk
82 Micklegate, York, YO1 6LF

carterjonas.co.uk
Offices throughout the UK

Exclusive UK affiliate of

CHRISTIE'S
INTERNATIONAL REAL ESTATE

Classification L2 - Business Data

IMPORTANT INFORMATION

These particulars are for general information purposes only and do not represent an offer of contract or part of one. Carter Jonas has made every attempt to ensure that the particulars and other information provided are as accurate as possible and are not intended to amount to advice on which you should rely as being factually accurate. You should not assume that the property has all necessary planning, building regulations or other consents and Carter Jonas have not tested any services, facilities or equipment. Any measurements and distances given are approximate only. Purchasers must satisfy themselves of all of the aforementioned by independent inspection or otherwise. Although we make reasonable efforts to update our information, neither Carter Jonas LLP nor anyone in its employment or acting on its behalf makes any representations warranties or guarantees, whether express or implied, in relation to the property, or that the content in these particulars is accurate, complete or up to date. Our images only represent part of the property as it appeared at the time they were taken. If you require further information please contact us.