



**SOUTH VIEW HOUSE, BARTON LE WILLOWS, YORK**  
£950,000

**Carter Jonas**



# BARTON LE WILLOWS, YORK, YO60 7PD

Picture this: a quintessential village nestled on the edge of the Howardian Hills. Now picture yourself in a beautiful, stone-built house, echoing the timeless charm of the area.

Built in 2017, South View House seamlessly blends modern comfort with classic design. Step inside and be greeted by a light-filled open-plan kitchen and dining room - the heart of this family-friendly home. Imagine cozy nights curled up by the wood-burning stove in the expansive sitting room or escaping to the dedicated home office for some focused work. With five well-proportioned bedrooms upstairs, there's room for everyone, whilst the second floor also offers a private haven for teenagers with its own living space and bathroom.

But South View House isn't just about the beautiful interiors. Outside, the idyllic setting continues. Secluded gardens bursting with colourful blooms and mature trees offer a tranquil escape. Imagine long summer evenings barbequing with friends on one of the multiple patios. Your vehicles are well catered to with the double garage, and ample parking, and there's even a secure store and woodstore for extra convenience.

South View House offers the perfect blend of rural charm and modern convenience. Nestled in a peaceful village with an active community, it's close to everything you need, from farm shops and award-winning delis to excellent schools and easy access to the motorway network. This isn't just a house, it's a lifestyle waiting to be yours.

**TENURE** Freehold

**LOCAL AUTHORITY** North Yorkshire Council

**EPC BAND** B

## AN IMPRESSIVE SIX-BED DETACHED, LOCATED IN THE IDYLIC VILLAGE OF BARTON LE WILLOWS







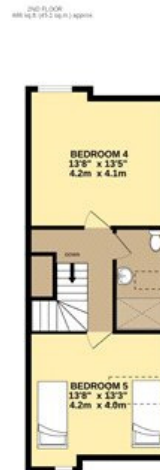
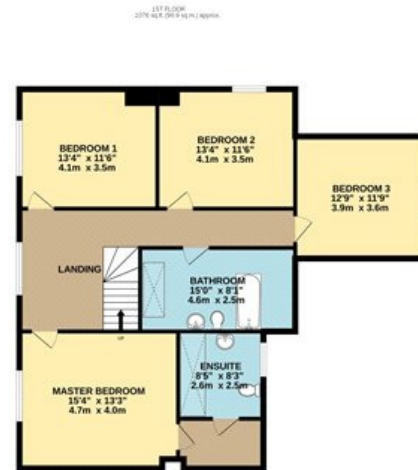
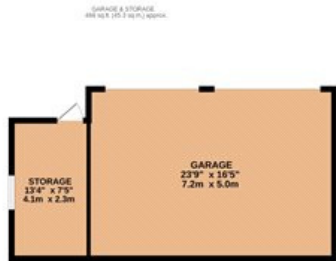
Classification L2 - Business Data





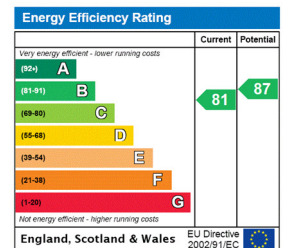
Classification L2 - Business Data





TOTAL FLOOR AREA : 3260 sq.ft. (302.8 sq.m.) approx.

Whilst every attempt has been made to ensure the accuracy of the floorplan contained here, measurements of doors, windows, rooms and any other items are approximate and no responsibility is taken for any error, omission or mis-statement. This plan is for illustrative purposes only and should be used as such by any prospective purchaser. The services, systems and appliances shown have not been tested and no guarantee as to their operability or efficiency can be given.  
Made with Metropix ©2024



York 01904 558200

york@carterjonas.co.uk  
82 Micklegate, York, YO1 6LF

**carterjonas.co.uk**  
Offices throughout the UK

*Exclusive UK affiliate of*

**CHRISTIE'S**  
INTERNATIONAL REAL ESTATE

Classification L2 - Business Data

#### IMPORTANT INFORMATION

These particulars are for general information purposes only and do not represent an offer of contract or part of one. Carter Jonas has made every attempt to ensure that the particulars and other information provided are as accurate as possible and are not intended to amount to advice on which you should rely as being factually accurate. You should not assume that the property has all necessary planning, building regulations or other consents and Carter Jonas have not tested any services, facilities or equipment. Any measurements and distances given are approximate only. Purchasers must satisfy themselves of all of the aforementioned by independent inspection or otherwise. Although we make reasonable efforts to update our information, neither Carter Jonas LLP nor anyone in its employment or acting on its behalf makes any representations warranties or guarantees, whether express or implied, in relation to the property, or that the content in these particulars is accurate, complete or up to date. Our images only represent part of the property as it appeared at the time they were taken. If you require further information please contact us.