



MANOR COTTAGE, APPLETON-LE-MOORS
£750,000

Carter Jonas

APPLETON-LE-MOORS, YORK, YO62 6TE

Commanding panoramic southerly views across the picturesque Vale of Pickering towards the Howardian Hills, this substantial 5-bedroom family residence offers generous and flowing accommodation—ideal for those seeking a blend of hybrid working or simply a retreat from the hustle and bustle of urban life.

The journey begins in the entrance hall, granting access to the spacious dining kitchen. Beyond lies the expansive living room, which seamlessly connects to the garden room, followed by the library and dining room.

Now, let's pause to appreciate the garden room. Its large windows frame stunning views over the garden and rolling hills, creating a serene space to start your day. Completing the ground floor are the WC, utility room, and garage.

Venturing upstairs, you'll find five well-proportioned bedrooms awaiting exploration. The master bedroom boasts an en-suite bathroom, while the family bathroom—unusually spacious—captures the imagination, rivaling the size of many double bedrooms.

Outside, the property features an attached garage, off-street parking, and beautifully tended south-facing gardens, all designed to maximize the outstanding long-range views.

In summary, this exceptional family home is nestled within a prime North York Moors National Park village, conveniently situated within the sought-after Ryedale School catchment area. Plus, it's just minutes away from the charming market towns of Kirkbymoorside, Helmsley, and Pickering, with easy access to Thirsk (23 miles) and York (29 miles).

- This property is connected to a mains electricity supply. The central heating is Oil fired.
- The water and drainage are supplied by Yorkshire Water.

TENURE Freehold

LOCAL AUTHORITY North Yorkshire Council

EPC BAND D

IMPOSING 5 BEDROOM COTTAGE OFFERING STUNNING VIEWS OVER THE VALE OF PICKERING





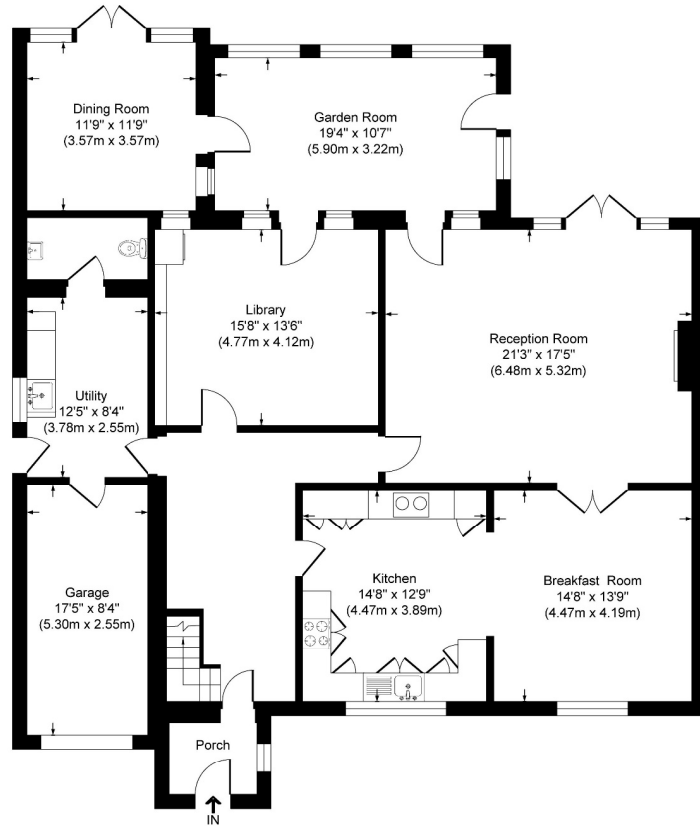
Classification L2 - Business Data



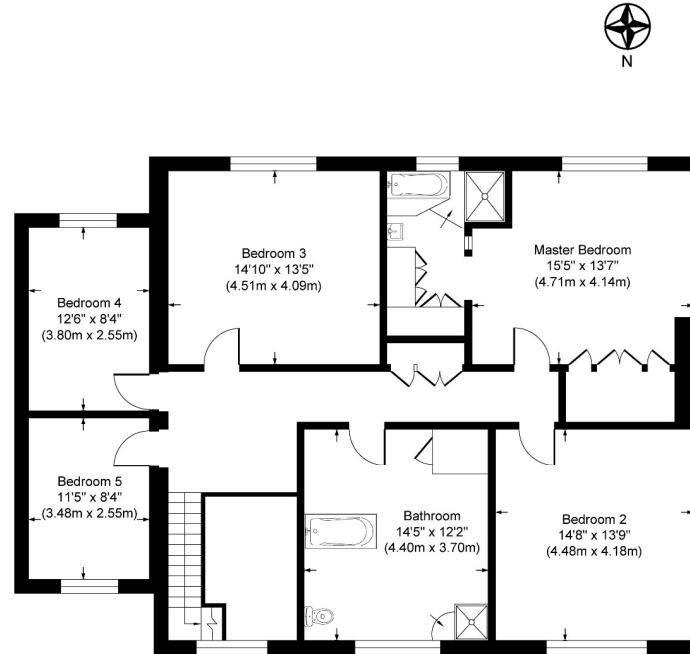
Classification L2 - Business Data

Appleton le Moors Manor Cottage

Approximate Gross Internal Floor Area = 314.8 sq m / 3389 sq ft
Ground Floor Area = 182.8 sq m / 1968 sq ft
First Floor Area = 132.0 sq m / 1421 sq ft

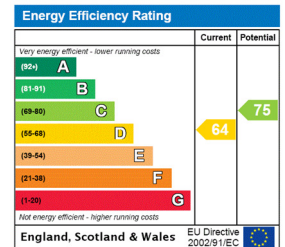


Ground Floor



First Floor

Illustration for identification purposes only, measurements are approximate, not to scale.



York 01904 558200

york@carterjonas.co.uk
82 Micklegate, York, YO1 6LF

carterjonas.co.uk
Offices throughout the UK

Exclusive UK affiliate of

CHRISTIE'S
INTERNATIONAL REAL ESTATE

Classification L2 - Business Data

IMPORTANT INFORMATION

These particulars are for general information purposes only and do not represent an offer of contract or part of one. Carter Jonas has made every attempt to ensure that the particulars and other information provided are as accurate as possible and are not intended to amount to advice on which you should rely as being factually accurate. You should not assume that the property has all necessary planning, building regulations or other consents and Carter Jonas have not tested any services, facilities or equipment. Any measurements and distances given are approximate only. Purchasers must satisfy themselves of all of the aforementioned by independent inspection or otherwise. Although we make reasonable efforts to update our information, neither Carter Jonas LLP nor anyone in its employment or acting on its behalf makes any representations warranties or guarantees, whether express or implied, in relation to the property, or that the content in these particulars is accurate, complete or up to date. Our images only represent part of the property as it appeared at the time they were taken. If you require further information please contact us.