



**THE RESIDENCE, BISHOPTHORPE ROAD**  
£425,000

**Carter Jonas**



# BISHOPTHORPE ROAD, YO23 1DQ

This stunning duplex apartment is located within the prestigious development of The Residence.

Upon arrival at The Residence, you are greeted by a grand reception area featuring a concierge service, lifts to all floors, a secure intercom system, communal gardens, and storage areas.

The apartment itself is beautifully presented, with bright and spacious living areas, high ceilings, and quality fittings throughout, including fitted wardrobes and quartz worktops. The layout comprises an entrance hall, a large open-plan living space with French doors leading to a balcony with far-reaching views, a dining area, and a modern kitchen with fitted units and integral appliances. The master bedroom, which boasts a large en-suite, and stairs that lead to a mezzanine with a second double bedroom and a family bathroom.

Externally, the property offers two designated parking spaces plus visitor spaces. An internal viewing of this highly impressive apartment is strongly recommended to fully appreciate its charm and features.

The Residence is an iconic and historic building on Bishopthorpe Road. Adjacent to York Racecourse and less than a 1-mile walk from the Bishopthorpe Road shops (which won the 'Great British High Street of the Year' Awards in 2015, this area was also voted by The Times as "one of the UK's coolest places to live" and has its own dedicated website), and just 1.2 miles from the city centre.

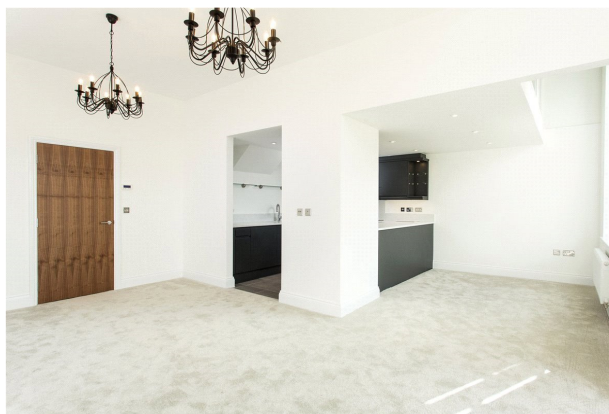
Material Information -  
Council Tax - Band E  
Lease Expires - 2267  
Ground Rent - £250 per annum

**TENURE** To be advised

**LOCAL AUTHORITY** City of York Council

**EPC BAND** C

**THIS EXQUISITE FIRST-FLOOR APARTMENT BOASTS TWO DOUBLE BEDROOMS, A SOUTH-FACING BALCONY, AND TWO PARKING SPACES.**









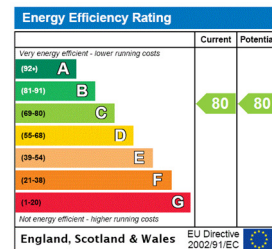
GROUND FLOOR  
770 sq.ft. (71.5 sq.m.) approx.

1ST FLOOR  
134 sq.ft. (12.4 sq.m.) approx.



TOTAL FLOOR AREA : 904 sq.ft. (84.0 sq.m.) approx.

Whilst every attempt has been made to ensure the accuracy of the floorplan contained here, measurements of doors, windows, rooms and any other items are approximate and no responsibility is taken for any error, omission or mis-statement. This plan is for illustrative purposes only and should be used as such by any prospective purchaser. The services, systems and appliances shown have not been tested and no guarantee as to their operability or efficiency can be given.  
Made with Metropix ©2024



York 01904 558200

york@carterjonas.co.uk  
82 Micklegate, York, YO1 6LF

**carterjonas.co.uk**  
Offices throughout the UK

Exclusive UK affiliate of  
**CHRISTIE'S**  
INTERNATIONAL REAL ESTATE

#### IMPORTANT INFORMATION

These particulars are for general information purposes only and do not represent an offer of contract or part of one. Carter Jonas has made every attempt to ensure that the particulars and other information provided are as accurate as possible and are not intended to amount to advice on which you should rely as being factually accurate. You should not assume that the property has all necessary planning, building regulations or other consents and Carter Jonas have not tested any services, facilities or equipment. Any measurements and distances given are approximate only. Purchasers must satisfy themselves of all of the aforementioned by independent inspection or otherwise. Although we make reasonable efforts to update our information, neither Carter Jonas LLP nor anyone in its employment or acting on its behalf makes any representations warranties or guarantees, whether express or implied, in relation to the property, or that the content in these particulars is accurate, complete or up to date. Our images only represent part of the property as it appeared at the time they were taken. If you require further information please contact us.