



CLEMATIS HOUSE, LOW STREET, THORNTON LE CLAY, YORK
GUIDE PRICE £563,000

Carter Jonas

CLEMATIS HOUSE, LOW STREET, THORNTON LE CLAY, YORK YO60 7TG

Welcome to Clematis House, a perfect family haven in the heart of Thornton Le Clay village. This charming property offers over 2000 square feet of spacious and well-maintained accommodation.

Ideal for family living, the ground floor features several inviting reception rooms, including a cozy sitting room with an open fire, a formal dining room, and a sunroom that floods the space with natural light. The expansive kitchen/breakfast room at the rear of the house is perfect for family meals and gatherings, with plenty of space to extend if desired.

Upstairs, you'll find four generous double bedrooms, ensuring everyone has their own space. The impressive principle suite boasts an en suite bathroom, a walk-in wardrobe, and French doors leading to a spacious balcony with stunning views over the garden and countryside. The second bedroom also features en suite shower and fitted wardrobes, making it perfect for guests or older children.

The south-facing rear garden is a true family paradise, with a variety of specimen trees, colourful planted beds, and fruit and vegetable patches. The terrace seating area, greenhouse, and summer house provide endless opportunities for outdoor activities and relaxation.

In addition to the integral garage, there's a versatile brick outbuilding with power, Formally the equestrian stable and is currently used as a garden store and studio, offering potential for a home office or playroom.

Thornton Le Clay is a vibrant village with a strong sense of community, located just north of York and close to the market town of Malton. The village, along with neighbouring Foston, offers excellent amenities including a primary school, church, village hall, and a bus service, making it an ideal location for families.

TENURE Freehold

EPC BAND F

COUNCIL TAX BAND F

**AN ATTRACTIVE PERIOD HOUSE SET IN GENEROUS SOUTH-FACING GARDENS,
SITUATED IN A SOUGHT-AFTER VILLAGE ON THE EDGE OF THE HOWARDIAN HILLS.**



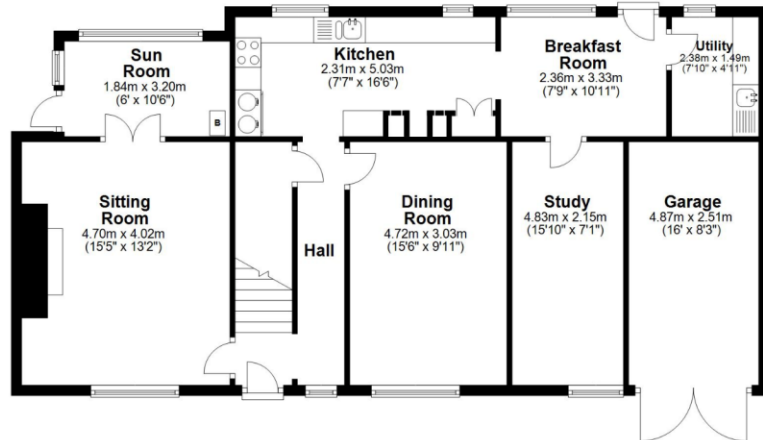
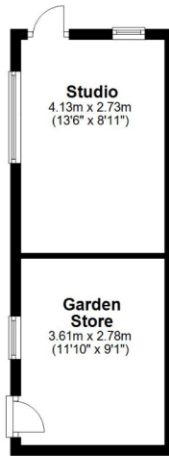


Classification L2 - Business Data

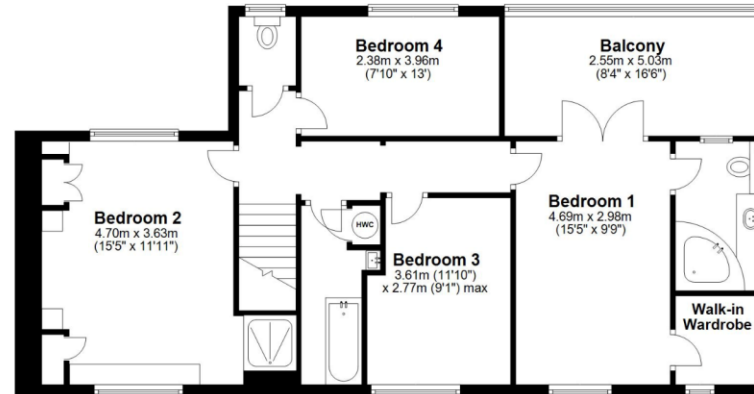


Classification L2 - Business Data

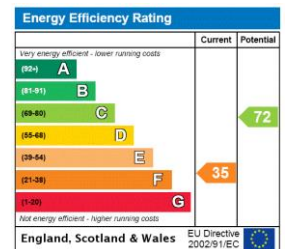
Ground Floor
Approx. 119.7 sq. metres (1288.0 sq. feet)



First Floor
Approx. 79.0 sq. metres (850.1 sq. feet)



Total area: approx. 198.6 sq. metres (2138.1 sq. feet)
Clematis House, Thornton Le Clay



York 01904 558200

york@carterjonas.co.uk
82 Micklegate, York, YO1 6LF

carterjonas.co.uk
Offices throughout the UK

Exclusive UK affiliate of

CHRISTIE'S
INTERNATIONAL REAL ESTATE

Classification L2 - Business Data

IMPORTANT INFORMATION

These particulars are for general information purposes only and do not represent an offer of contract or part of one. Carter Jonas has made every attempt to ensure that the particulars and other information provided are as accurate as possible and are not intended to amount to advice on which you should rely as being factually accurate. You should not assume that the property has all necessary planning, building regulations or other consents and Carter Jonas have not tested any services, facilities or equipment. Any measurements and distances given are approximate only. Purchasers must satisfy themselves of all of the aforementioned by independent inspection or otherwise. Although we make reasonable efforts to update our information, neither Carter Jonas LLP nor anyone in its employment or acting on its behalf makes any representations warranties or guarantees, whether express or implied, in relation to the property, or that the content in these particulars is accurate, complete or up to date. Our images only represent part of the property as it appeared at the time they were taken. If you require further information please contact us.