



COMPTON STREET, YORK
Offers Over £325,000

Carter Jonas

COMPTON STREET, YORK, YO30 6LE

An opportunity to acquire a development site with planning consent for the erection of 3 Mews houses.

The site is located on Compton Street in Clifton, offering superb access to both St Peters School and York centre. The mews houses will benefit from Southwest facing terracing, with 2 enjoying garage parking and the third having access to an allocated off-street space.

Planning consent was granted by City of York Council on the 7th of February 2023 for the erection of the 3 dwellings.

To review the application and related documents, please go to the City of York Council planning site for more details; 22/01553/FUL

Viewing is strictly by appointment only.

PLANNING FOR 3 HIGH-END MEWS HOUSES IN A PRIME LOCATION, CLOSE TO THE CITY CENTRE AND A SHORT WALK TO ST. PETERS SCHOOL



PROPOSED DEVELOPMENT

Internal Layout





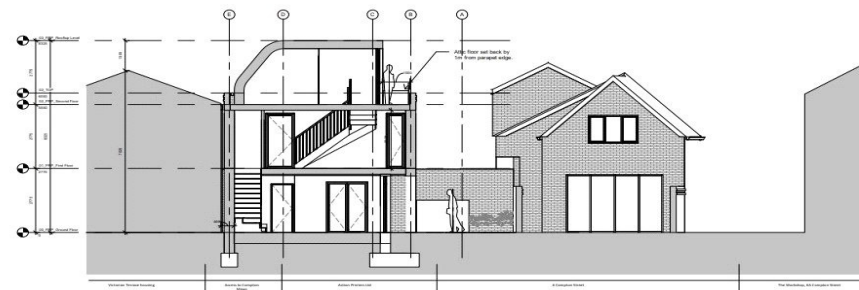
Proposed Elevation A
1:150



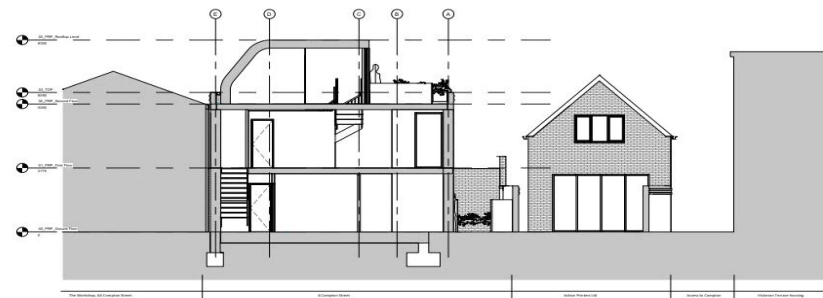
Proposed Elevation C
1:150



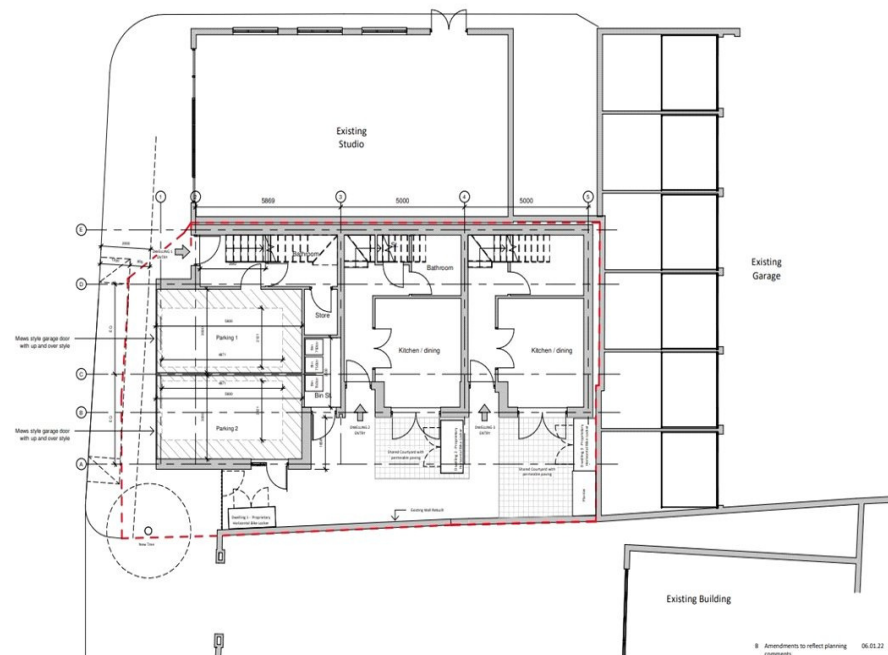
Proposed Elevation D
1:150



Proposed Section
1:150



Proposed Section
1:150



B Amendments to reflect planning comments 06.05.22 DP
 A Amendments to reflect planning comments 03.11.22 DP

